



Norwood Road, SE24 | Offers In Excess Of £425,000

02087029555

hernehill@pedderproperty.com

pedder
We live local



In General

- Victorian conversion
- Ground floor
- Share of freehold
- Double bedroom
- Shared garden
- Off street parking
- Close to transport links

In Detail

A well presented double bedroom ground period conversion flat with large communal garden to rear.

The accommodation comprises a good-sized reception room with three large sash windows to front, coving, picture rail and ceiling rose, the kitchen has a stylish range of wall & base units, integrated slimline dishwasher & fridge/freezer, oven & hob, and butler sink. The spacious bedroom has double glazed doors leading to the back garden and the bathroom comprises a suite with bath, wc, wash hand basin in vanity unit.

The large communal garden with secure side access is mainly laid to lawn with mature shrub borders and is not overlooked to the rear.

This ground floor flat further benefits from having it's own parking space accessed on Deronda Road.

Herne Hill centre offers a popular range of restaurant & shopping amenities, railway station (Victoria, Thameslink, Blackfriars) and access to the vast expanse of Brockwell Park with its lido & cafe..

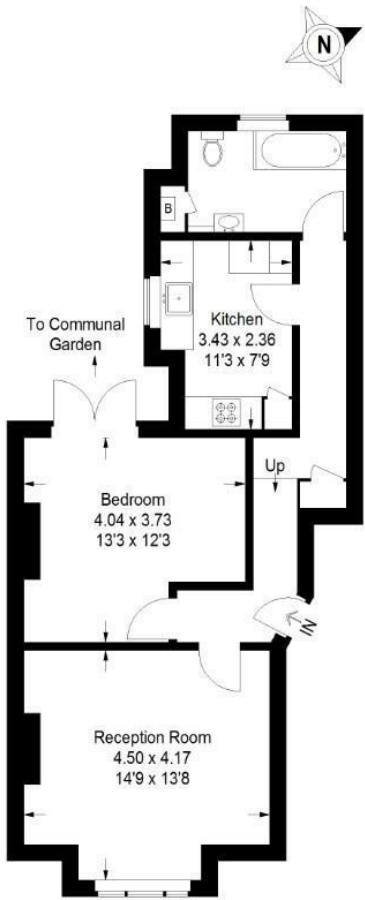
EPC: D | Council Tax: C | Lease: 86 years remaining | SC: Nil | GR: Nil | BI: £351.56



Floorplan

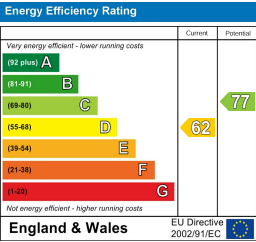
Norwood Road, SE24

Approximate Gross Internal Area
56.1 sq m / 604 sq ft



Ground Floor

Copyright www.pedderproperty.com © 2025
These plans are for representation purposes only as defined by RICS - Code of Measuring Practice. Not drawn to Scale. Windows and door openings are approximate. Please check all dimensions, shapes and compass bearings before making any decisions reliant upon them.



Pedder Property Ltd trading as Pedder for themselves and for the vendor/landlord of this property whose agents they are, give notice that (1) these particulars do not constitute any part of an offer or contract, (2) all statements contained within these particulars are made without responsibility on the part of Pedder or the vendor/landlord, (3) whilst made in good faith, none of the statements contained within these particulars are to be relied upon as a statement of representation or fact, (4) any intending purchaser/tenant must satisfy him/herself by inspection or otherwise as to the correctness of each of the statements contained within these particulars, (5) the vendor/landlord does not make or give either Pedder or any person in their employment any authority to make or give representation or warranty whatsoever in relation to this property.