



**POOLE
TOWNSEND**

Moorgarth, Swarthmoor, Ulverston, LA12 0HX

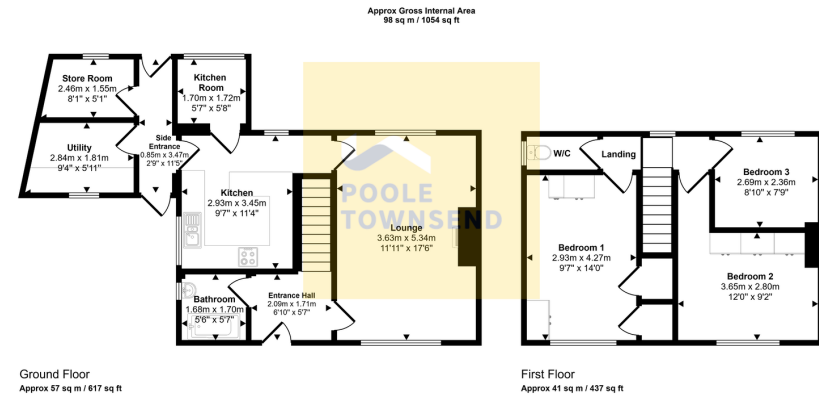
£219,000

🛏 3 🚪 1 🚗 1



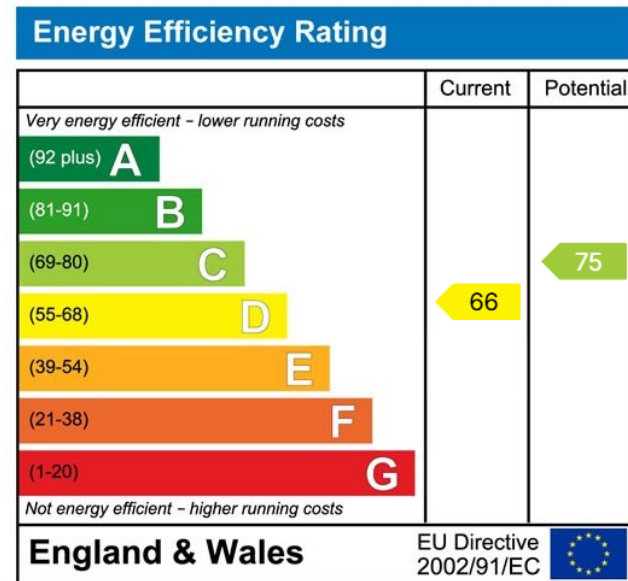
- Good sized semi detached home
- Offering an exciting opportunity to modernise
- Spacious living area
- 3 bedrooms
- Council tax band B
- No upper chain
- Popular location
- Freehold
- Great sized gardens with outbuildings
- Local occupancy clause applies





This floorplan is only for illustrative purposes and is not to scale. Measurements of rooms, doors, windows, and any items are approximate and no responsibility is taken for any error, omission or mis-statement. Items of items such as bathroom suites are representations only and may not look like the real items. Made with Made Snaggy 360.

This semi-detached house, located in a sought-after area, offers a fantastic opportunity for those looking to create a personalized living space. Boasting three bedrooms, a lounge, a kitchen, and a downstairs bathroom, this property is perfect for families or individuals seeking a project. With gardens to the front and rear, and scope to add a driveway and garage, it's an ideal canvas for modernisation and improvement, allowing you to tailor it to your exact tastes. Local occupancy clause applies (Cumbria wide)



Visit us at
www.pooletownsend.co.uk
enquiries@pooletownsend.co.uk

We are open
 Monday – Friday 9.00 – 5.00
 Saturday 9.00 – 1.00

Barrow 01229 811811
 Ulverston 01229 588111
 Grange 015395 33316
 Kendal 01539 734455
 Milnthorpe 015395 62044