

HARWOOD

THE ESTATE AGENT

01952 881010

43 Birbeck Drive, Madeley TF7 5TP



£ 7 0, 0 0 0 region

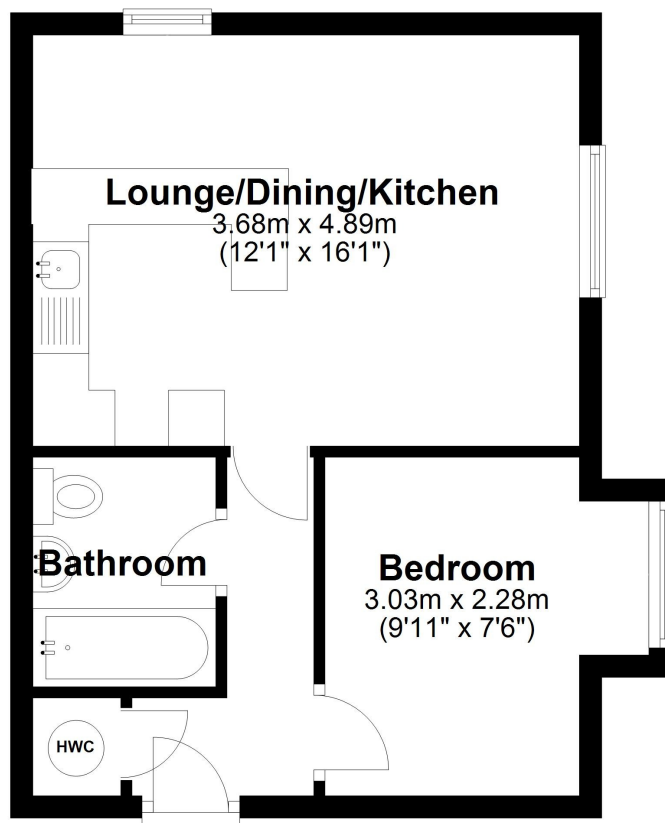
This first floor, one bedroom apartment is offered for sale with a long term tenant in situ, currently paying £550 pcm. The property is well positioned for access to local amenities and public transport. A nearby footpath provides a pleasant route into historic Ironbridge with its many attractions, while in the opposite direction Madeley offers supermarkets, pubs, medical facilities and more. Abraham Darby School is also within walking distance. The accommodation comprises a spacious open plan lounge/kitchen/diner, a double bedroom and a bathroom. Communal parking is available nearby, and the location provides excellent links to the national road network. An annual payment of £396 covers service charge, ground rent and buildings insurance.

Score	Energy rating	Current	Potential
92+	A		
81-91	B		
69-80	C		80 C
55-68	D	59 D	
39-54	E		
21-38	F		
1-20	G		



First Floor

Approx. 34.0 sq. metres (366.0 sq. feet)



Total area: approx. 34.0 sq. metres (366.0 sq. feet)

Tenure Leasehold **Council tax** Band A

Ground rent

Annual service charge £400

Fixtures & Fittings Where specifically mentioned in these sales particulars are included in the sale price.

N.B Please note, that none of the services, heating systems or any appliances at this property have been tested, therefore no warranty can be given or implied as to their working order. These particulars do not constitute or form a part of any contract. Whilst Harwood Estate Agents and their employees take every care in the preparation of these particulars they hereby state both on behalf of themselves and the vendor that no intending purchaser should rely on any of the statements of representation of fact and the intending purchaser should make his/her own inspection and enquiries in order to satisfy himself/herself of their authenticity and no responsibility is accepted for any error or omission herein.

Details prepared : 5th February 2026