



## Campion Grove, Eastfield, Scarborough, YO11 3XG

- Three-bedroom semi-detached
- Open-plan living space
- Garden & parking for two
- High standard finish
- En-suite to master
- Popular Middle Deepdale location

**Asking Price £260,000**



# Campion Grove, Eastfield, Scarborough, YO11 3XG

## DESCRIPTION

Hunters are delighted to bring to the market this beautifully presented three-bedroom semi-detached home, finished to a high standard throughout and located within the popular Middle Deepdale area.

Upon entering, you are welcomed into an entrance hallway with a convenient ground floor WC. The heart of the home is the impressive open-plan kitchen and living area, offering a superb space for modern day living. This bright and spacious room provides ample space for both dining and relaxing, with access out to the rear garden—ideal for entertaining and everyday family life.

To the first floor, the property offers three well-proportioned bedrooms arranged around a central landing, with the principal bedroom benefitting from its own en-suite shower room. The accommodation is further complemented by a contemporary family bathroom, providing practicality for busy households.

Externally, the property enjoys a well-maintained rear garden, perfect for the warmer months. To the front, there is off-road parking for two vehicles, adding further convenience.

Situated within the ever-popular Middle Deepdale development, the property is ideally positioned for a range of local amenities including supermarkets, retail parks and leisure facilities. There are well-regarded schools nearby, along with excellent transport links providing easy access into Scarborough town centre and surrounding areas. The location also offers convenient access to the A64, making it ideal for commuters, while nearby countryside and coastal routes provide the perfect balance of town and outdoor living.

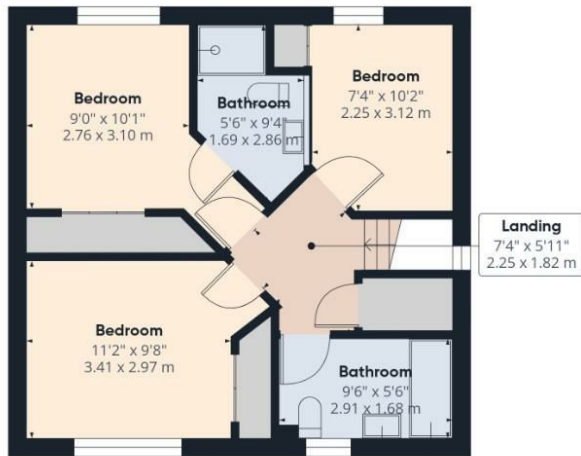
A stylish, move-in ready home in a sought-after location – early viewing is highly recommended.







Ground Floor



Floor 1



Approximate total area<sup>(1)</sup>  
979 ft<sup>2</sup>  
90.9 m<sup>2</sup>

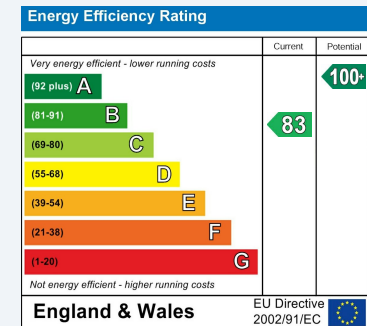
(1) Excluding balconies and terraces

Calculations reference the RICS IPMS 3C standard. Measurements are approximate and not to scale. This floor plan is intended for illustration only.

GIRAFFE360

## ENERGY PERFORMANCE CERTIFICATE

The energy efficiency rating is a measure of the overall efficacy of a home. The higher the rating the more energy efficient the home is and the lower the fuel bills will be.



These particulars are intended to give a fair and reliable description of the property but no responsibility for any inaccuracy or error can be accepted and do not constitute an offer or contract. We have not tested any services or appliances (including central heating if fitted) referred to in these particulars and the purchasers are advised to satisfy themselves as to the working order and condition. If a property is unoccupied at any time there may be reconnection charges for any switched off/disconnected or drained services or appliances - All measurements are approximate.

**THINKING OF SELLING?** If you are thinking of selling your home or just curious to discover the value of your property, Hunters would be pleased to provide free, no obligation sales and marketing advice. Even if your home is outside the area covered by our local offices we can arrange a Market Appraisal through our national network of Hunters estate agents.

### Viewings

Please contact [scarborough@hunters.com](mailto:scarborough@hunters.com), if you wish to arrange a viewing appointment for this property or require further information.

### Valuations

For a valuation of your property, please email the team with your property details, contact information and the times you are available.



33 Huntriss Row, Scarborough, YO11 2ED  
Tel: 01723 336760 Email: [scarborough@hunters.com](mailto:scarborough@hunters.com) <https://www.hunters.com>

