



House - Terraced (EPC Rating: )

**BUSHEY HIGH STREET, WATFORD,  
WD23 3DJ**

PCM

**£2,300 PCM**

# 3 Bedroom House - Terraced located in Watford

## THREE BEDROOM TOWNHOUSE LOCATED JUST OFF BUSHEY HIGH STREET

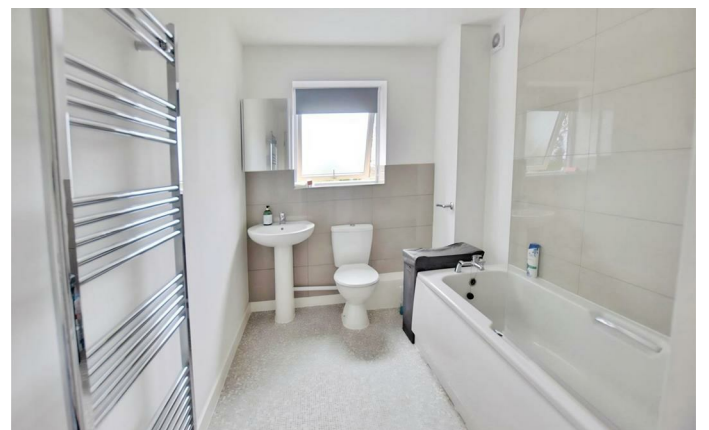
An exciting opportunity to secure a beautifully presented modern three-bedroom townhouse in an exclusive mews-style development just moments from Bushey High Street.

Perfectly positioned for everyday convenience, the property is close to local shops, excellent schools, major motorway links, and Bushey Train Station, making it ideal for families and commuters alike.

The ground floor offers a bright and stylish open-plan living and kitchen space, complete with fully fitted appliances, modern grey laminate flooring, and a convenient cloakroom/W.C.

On the first floor, there are two generous double bedrooms and a contemporary family bathroom, finished with partial tiling and heated towel rails. This floor is carpeted throughout with modern grey carpets, creating a smart and comfortable feel.

The top floor is dedicated to an impressive principal double bedroom, complete with an en suite shower room and useful storage, offering a private and spacious retreat.



WATFORD LETTINGS | 12 MARKET STREET, WATFORD, HERTFORDSHIRE, WD18 0PD

Council Tax Band

Energy Performance Graph

Energy Efficiency Rating		
	Current	Potential
<i>Very energy efficient - lower running costs</i>		
(92 plus) <b>A</b>		
(81-91) <b>B</b>		
(69-80) <b>C</b>		
(55-68) <b>D</b>		
(39-54) <b>E</b>		
(21-38) <b>F</b>		
(1-20) <b>G</b>		
<i>Not energy efficient - higher running costs</i>		
<b>England &amp; Wales</b>	EU Directive 2002/91/EC	

Call us on

**01923 220 012**

**rentals@warrenanthony.co.uk**

**www.warrenanthony.co.uk**

Agents Note: Whilst every care has been taken to prepare these particulars, they are for guidance purposes only. All measurements are approximate and are for general guidance purposes only and whilst every care has been taken to ensure their accuracy, they should not be relied upon and potential buyers are advised to recheck the