



THE  
PARK LANE GROUP



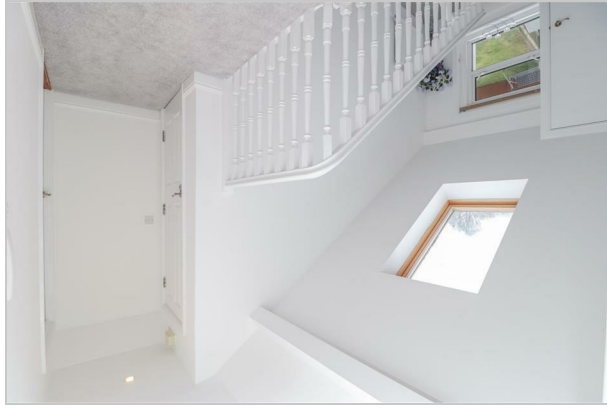
Hurst Road, Eastbourne  
£895 Per Month

Apartment

Date Available: 31st May 2026  
Deposit: £1,032  
Council Tax Band: A



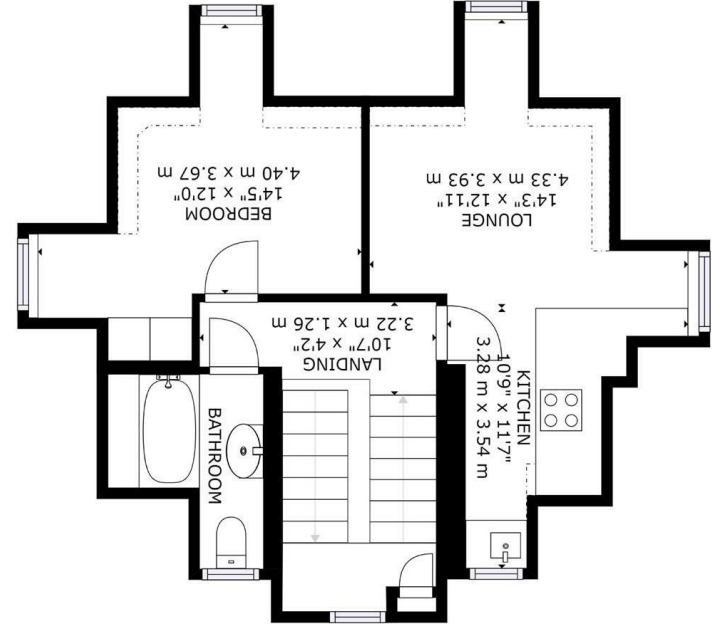
**IMPORTANT NOTICE** – These particulars have been prepared in good faith and they are not intended to constitute part of an offer or contract. We have not performed a structural survey on this property and the services, appliances and specific fittings have not been tested. All photographs, measurements, floor plans and distances referred to are given as a guide and should not be relied upon.



- \*COMING SOON\*
- Located in the Highly Sought After Upperton Area
- Beautiful Period Property
- Venetian Blinds Fitted Throughout
- Double Glazing & Gas Central Heating
- Modern Fitted Kitchen, with Integrated Appliances
- Close to Mainline Train Station
- Close to Shops, Schools and Sport Facilities
- Secure Phone Entry System

England & Wales	
EU Directive 2002/91/EC	
Very environmentally friendly - lower CO <sub>2</sub> emissions	(A)
	(B)
	(C)
	(D)
	(E)
	(F)
Not environmentally friendly - higher CO <sub>2</sub> emissions	(G)
Current	76
Potential	

England & Wales	
EU Directive 2002/91/EC	
Very energy efficient - lower running costs	(A)
	(B)
	(C)
	(D)
	(E)
	(F)
Not energy efficient - higher running costs	(G)
Current	76
Potential	76



GROSS INTERNAL AREA  
 FLOOR 1: 65 sq. ft. m<sup>2</sup>, FLOOR 2: 454 sq. ft. m<sup>2</sup>, FLOOR 3: 42 sq. ft. m<sup>2</sup>  
 EXCLUDED AREAS: REDUCED HEADROOM BELOW 1.5M: 42 sq. ft. m<sup>2</sup>  
 TOTAL: 526 sq. ft. m<sup>2</sup>  
 SIZES AND DIMENSIONS ARE APPROXIMATE, ACTUAL MAY VARY.