



Branch Road, E14

£550,000

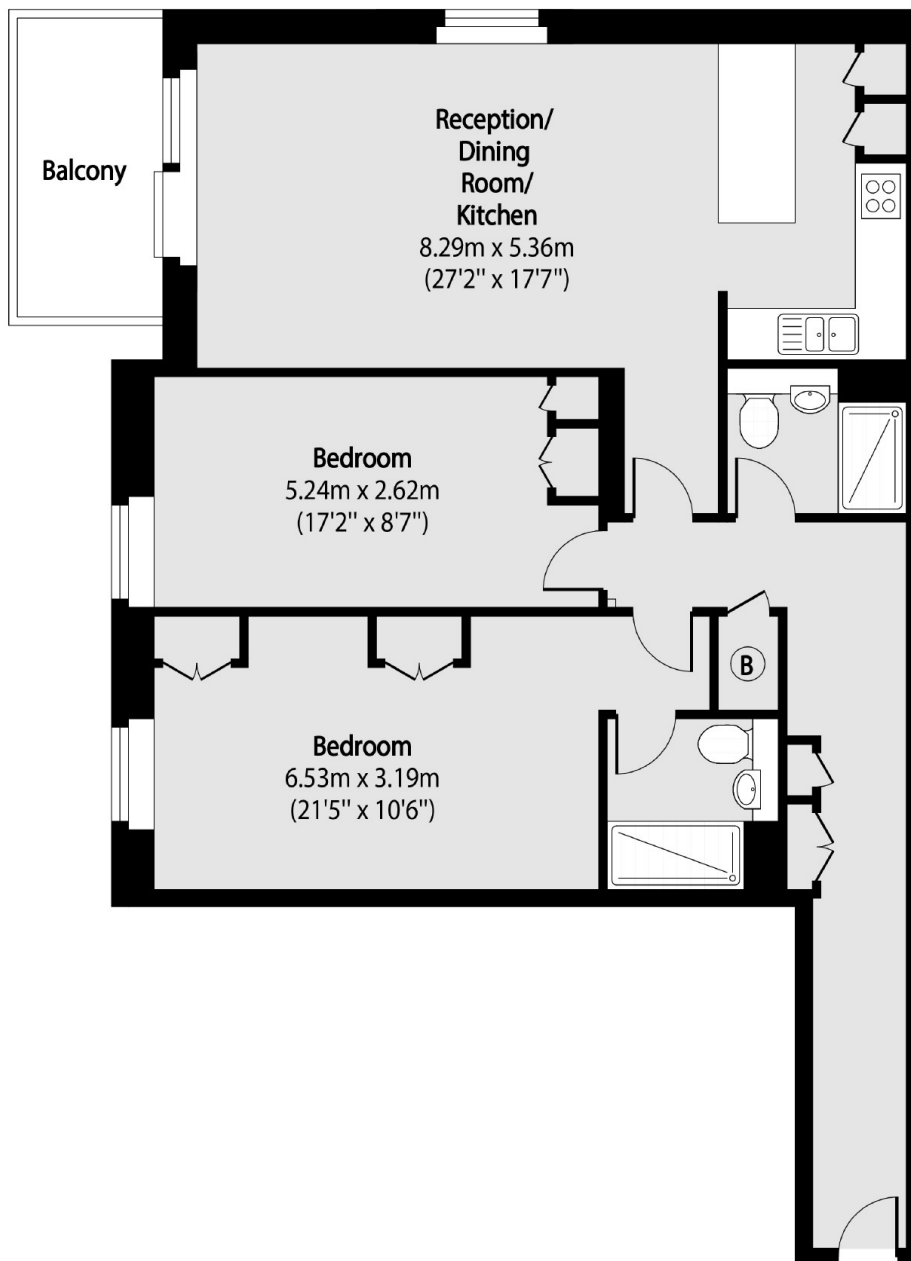
Presented in immaculate condition and offering 971 sq.ft of ample living space is the two bedroom home in the sought after Medland House. The property has re-fitted bathrooms, a re-fitted kitchen, private balcony with marina view, concierge service and a 999 year lease.

Medland House is 400 feet away from Limehouse DLR station which offers good links to Canary Wharf and The City. Narrow Street is accessible from the development and has a selection of riverside pubs, restaurants and the Thames path.

Features

Offers In Excess Of
971 Sq.ft
64 Sq.ft Balcony
Marina Views
Secure Allocated Parking
Concierge Service

Branch Road, London, E14



Total area (approx): 90.25 sq m (971 sq. ft)

Balcony total area (approx): 5.95 sq m (64 sq. ft)