



## Glenton Mews, SE15

£900,000

Tucked away within a quiet residential mews in the heart of Nunhead, this modern three bedroom house offers generous living space, excellent natural light and the rare benefit of three private outdoor areas.

Glenton Mews is perfectly positioned for the amenities of Nunhead, Peckham Rye and East Dulwich, with excellent transport links close by including Nunhead Station and Peckham Rye Station, as well as a wide choice of cafés, independent shops and green spaces.

### Features

- Three Double Bedrooms
- Two Bathrooms
- South Facing Garden
- Balcony & Terrace
- Private Parking Space
- Chain Free



## Glenton Mews, SE15

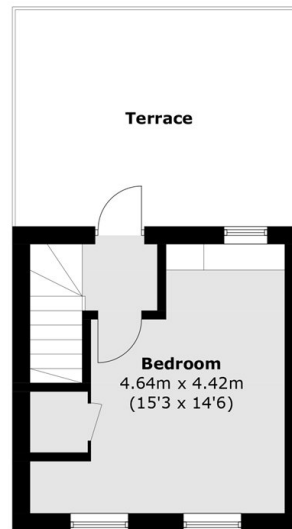
The ground floor is arranged around a spacious open plan reception and dining area, thoughtfully designed for both everyday living and entertaining. Large doors open directly onto a south facing garden, creating a seamless connection between indoors and out and making this an ideal space for summer dining and relaxation. A sleek contemporary kitchen sits neatly to the front, offering excellent storage and worktop space.

The upper floors provide three well proportioned bedrooms, all finished in a clean modern style, along with stylish bathrooms. Each level benefits from access to an outdoor space, giving the house a wonderful sense of openness and flexibility whether used for entertaining, working from home or simply enjoying the sun throughout the day.

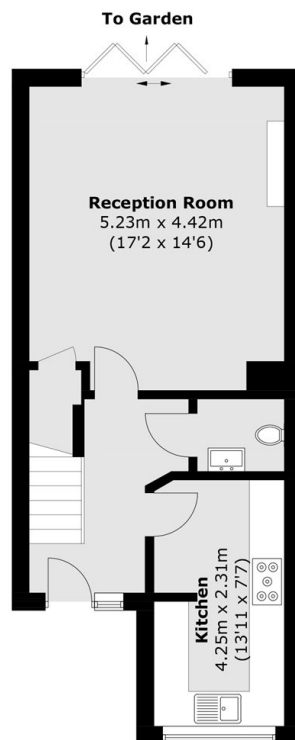




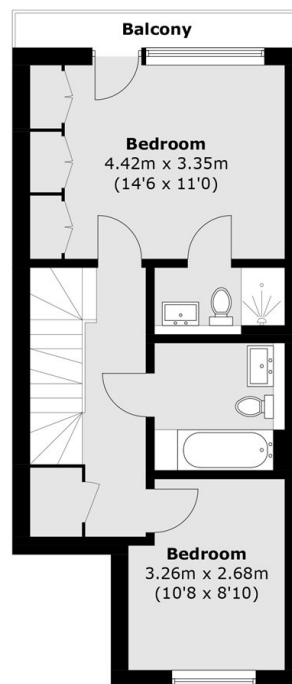
# Glenton Mews, London, SE15



**Second Floor**



**Ground Floor**



**First Floor**

Total area (approx.): 107.0 sq. m (1,151.7 sq. ft)  
Balcony / Terrace area (approx.): 21.3 sq. m (229.3 sq. ft)