

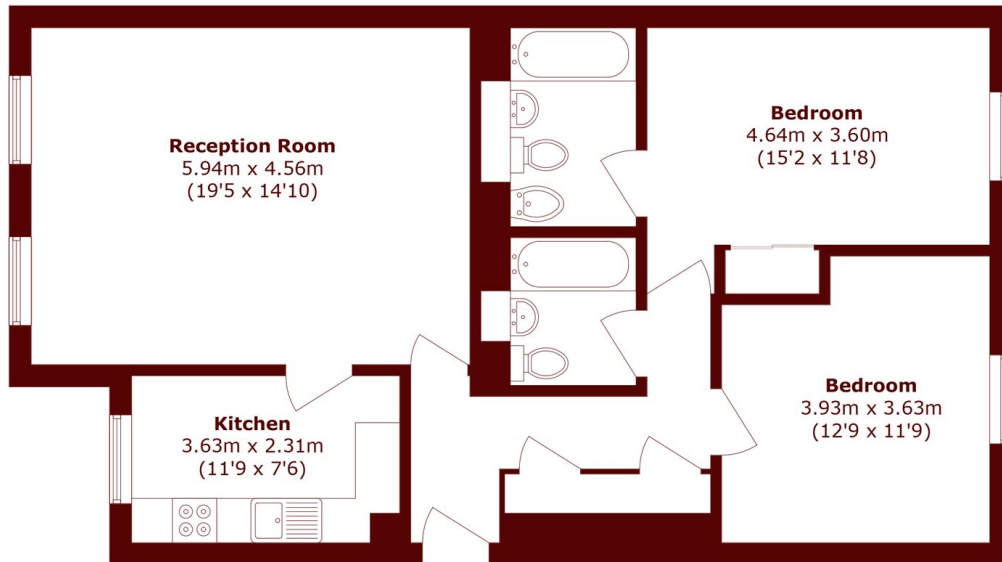


Gloucester Terrace, W2

£900,000



- Two Double Bedrooms
- En Suite Bathroom
- No Onward Chain
- Underground Parking
- Share Of Freehold
- Porter & Lift



Total area (approx.): 87.1 sq. m (937.5 sq. ft)

Marsh & Parsons Notting Hill

2-6 Kensington Park Road,
London, W11 3BU
020 7313 2890