



4, Woodlands Road, Ware
SG12 0SN
Guide Price £650,000



stevenoates.com



4 Woodlands Road, Thundridge, Ware, SG12 0SN

Offered chain free, this well-presented four-bedroom family home offers approximately 148 sq m (1,595 sq ft) of accommodation, including a detached garden office.

The property has been comprehensively refurbished by the current owners within the last five years, including a new roof, rewiring, replumbing and the installation of an A-rated boiler. All windows are triple glazed, helping to improve energy efficiency and reduce outside noise.

Accommodation includes a spacious open-plan kitchen/dining/family room with central island and doors opening onto the rear terrace, a separate living room, study and ground floor cloakroom. Upstairs are four bedrooms, including a principal bedroom with en-suite shower room, together with a modern family bathroom.

Externally, the property benefits from a landscaped rear garden, home office and off-street parking for several cars.

Woodlands Road is located in the village of Thundridge, just under 2 miles from Ware town centre and Ware railway station, which provides direct services to London Liverpool Street.

The property is within easy reach of a range of local amenities including supermarkets, cafés, restaurants, gyms and everyday shopping facilities in Ware. Hertford town centre is also a short drive away.

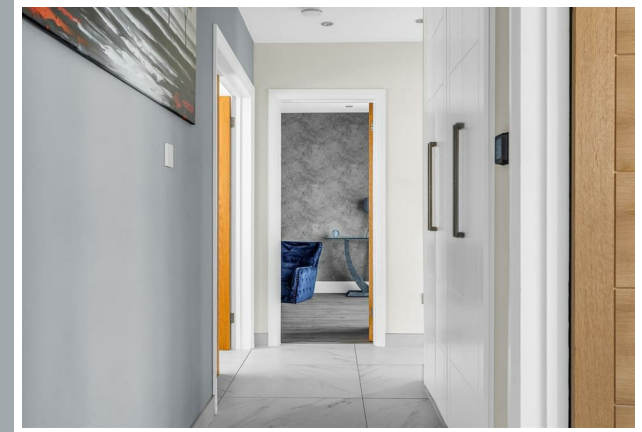
The A10 is easily accessible, providing convenient road links to Hertford, Stevenage, Cambridge, the M25 and London.



70 Fore Street, Hertford, Hertfordshire, SG14 1BY



70 Fore Street, Hertford, Hertfordshire, SG14 1BY

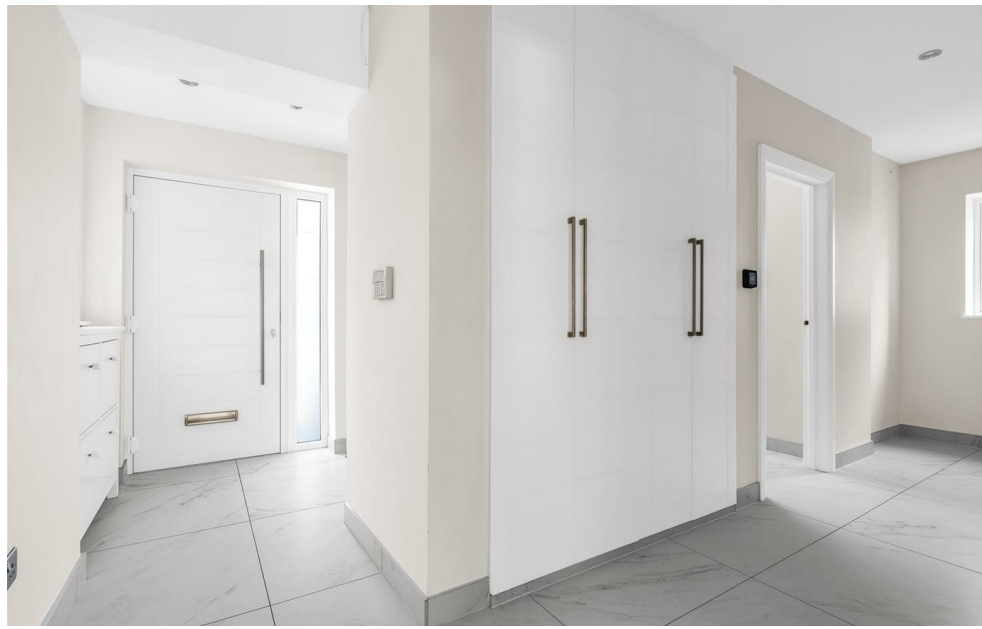


70 Fore Street, Hertford, Hertfordshire, SG14 1BY

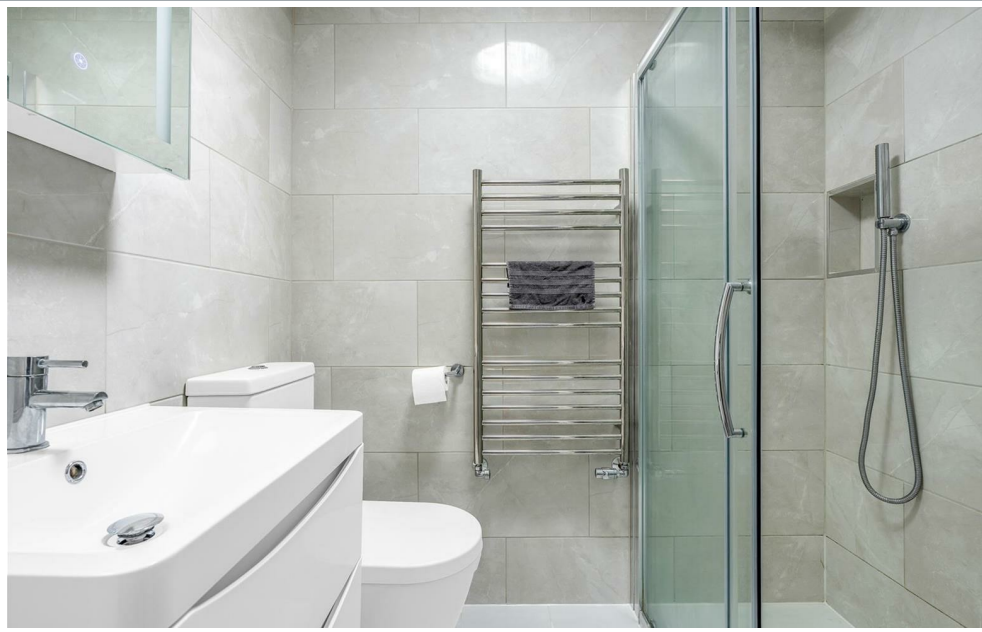
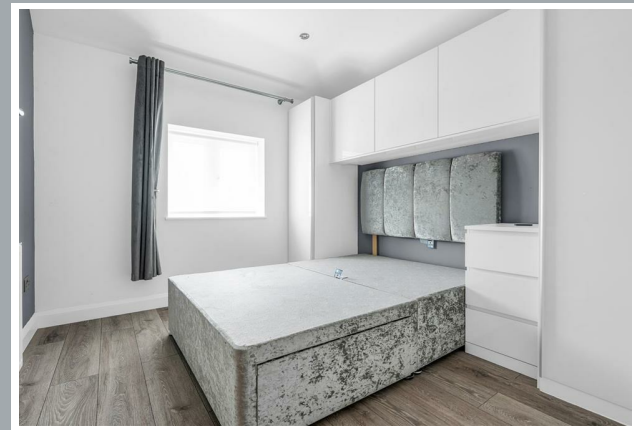
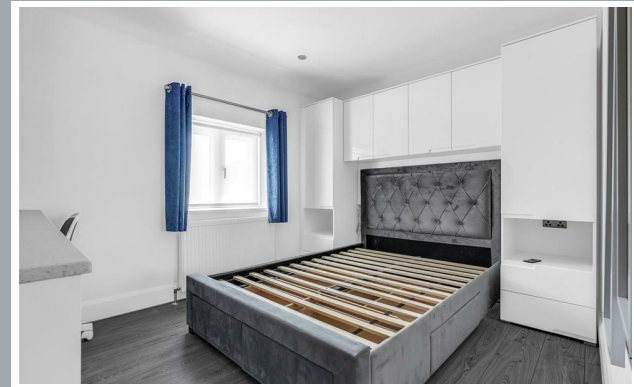
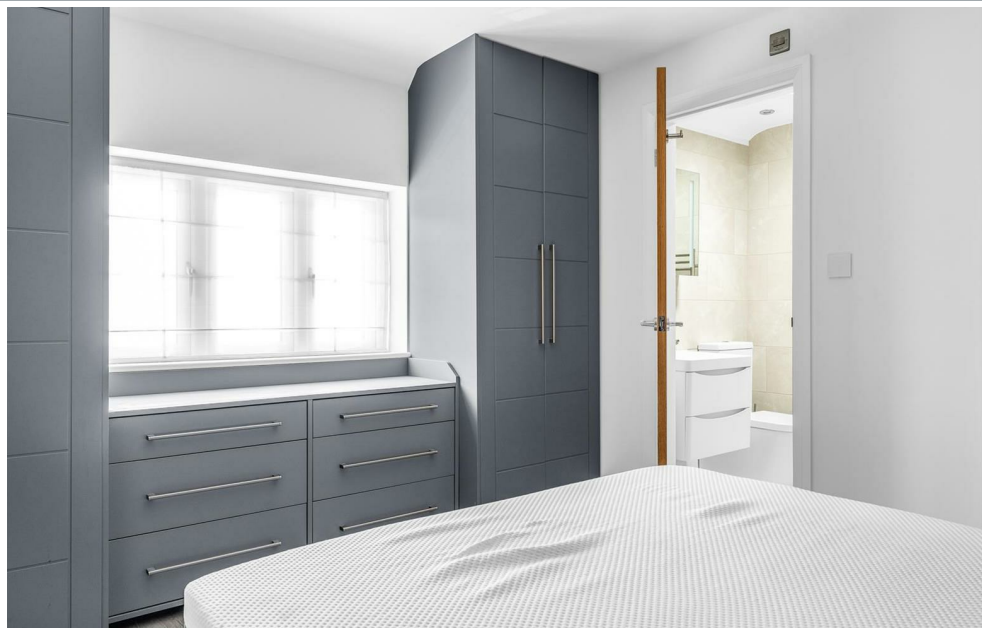




70 Fore Street, Hertford, Hertfordshire, SG14 1BY



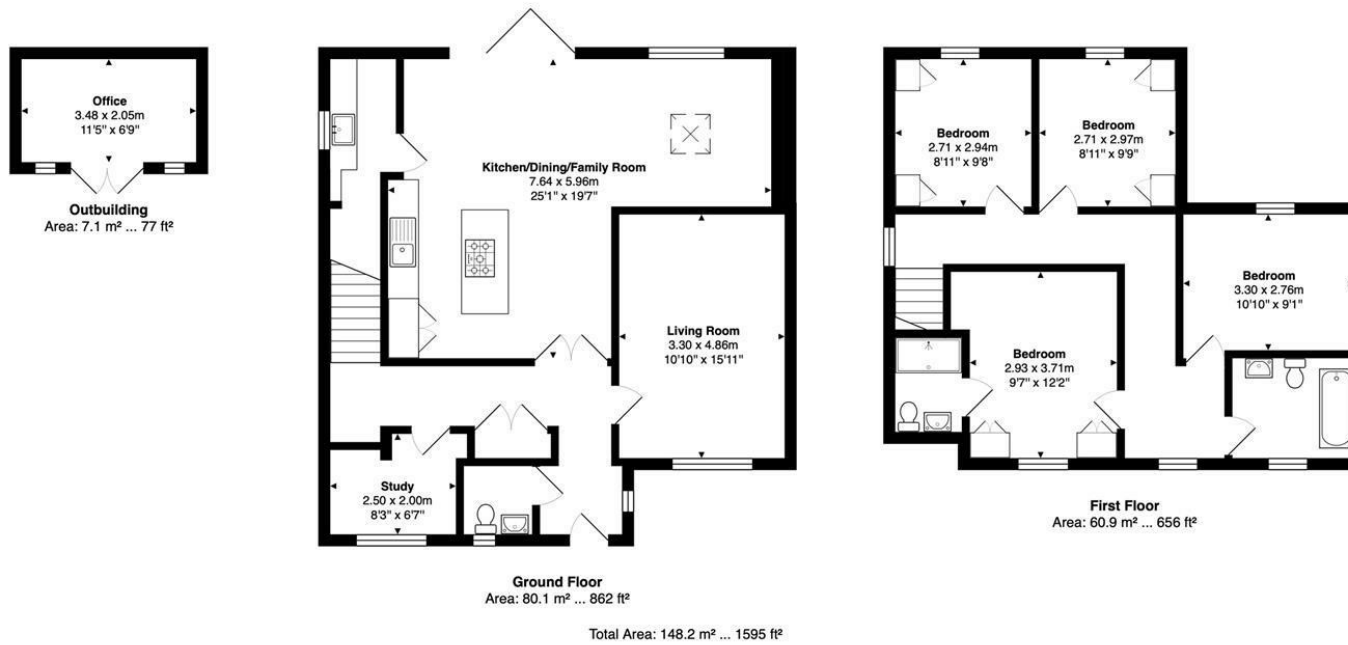
70 Fore Street, Hertford, Hertfordshire, SG14 1BY



70 Fore Street, Hertford, Hertfordshire, SG14 1BY



70 Fore Street, Hertford, Hertfordshire, SG14 1BY



FOR ILLUSTRATIVE PURPOSES ONLY. NOT TO SCALE
 Whilst every attempt has been made to ensure the accuracy of the floor plan shown, all measurements, positioning, fixtures, features, fittings and any other data shown are an approximate interpretation for illustrative purposes only and are not to scale. No responsibility is taken for any error, omission, miss-statement or use of data shown.
 Property marketing provided by www.matthewkyle.co.uk

These particulars, whilst believed to be accurate are set out as a general outline only for guidance and do not constitute any part of an offer or contract. Intending purchasers should not rely on them as statements of representation of fact, but must satisfy themselves by inspection or otherwise as to their accuracy. No person in this firm's employment has the authority to make or give any representation or warranty in respect of the property.



stevenoates.com