

## Fernhead Road, W9

£525,000

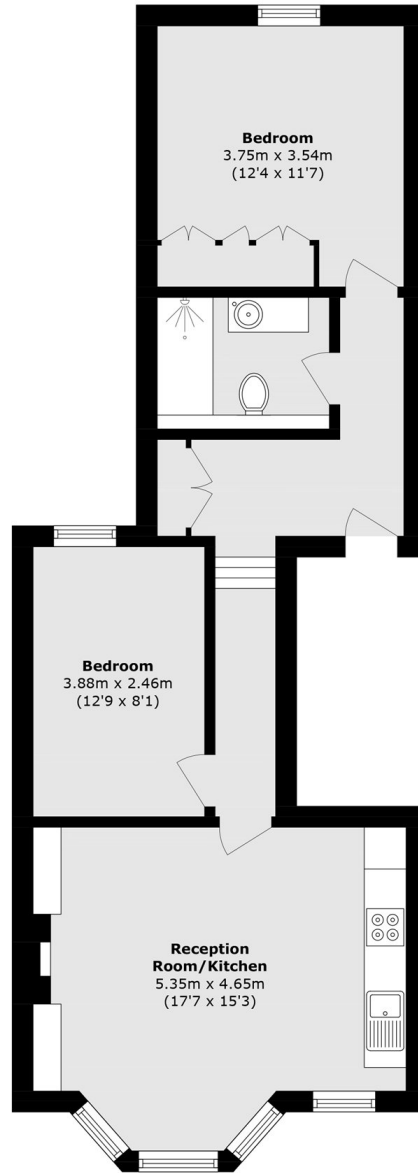
A two bedroom, first floor flat set in a Victorian conversion. This charming property comes complete with an open plan kitchen/reception featuring a bay window, a bathroom with a walk-in shower and wooden flooring throughout.

Fernhead Road offers excellent access to Queen's Park and Westbourne Park, with numerous transport links to Central London. It's conveniently located within a mile of popular destinations, such as Little Venice, Portobello, and Paddington Recreation Ground.

### Features

- First Floor Flat
- Open Plan Kitchen/Reception
- Wooden Flooring Throughout
- Ample Storage
- Good Transport Links
- Great Location

# Fernhead Road, Maida Vale, W9



Total area (approx.): 62.2 sq. m (669.5 sq. ft)