

6 Cliffe

Warley, HX2 7SE

£650 PCM





Situated in this highly desirable and much sought after semi-rural village location of Warley, an idyllic cottage enjoying panoramic views. This stone built cottage provides a traditional feel with authentic stone fireplace, mullion windows, timber ceiling beams, and small courtyard style entrance. Fully equipped with Gas central heating.

Accommodation

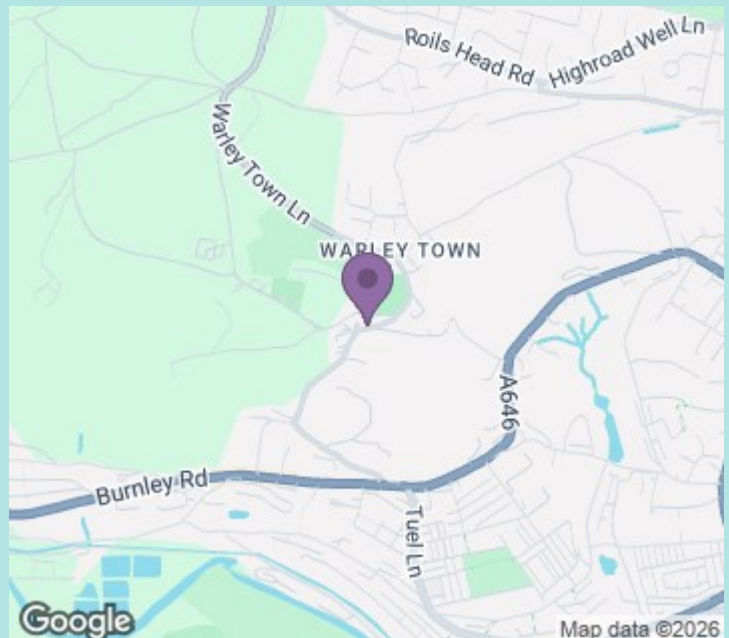
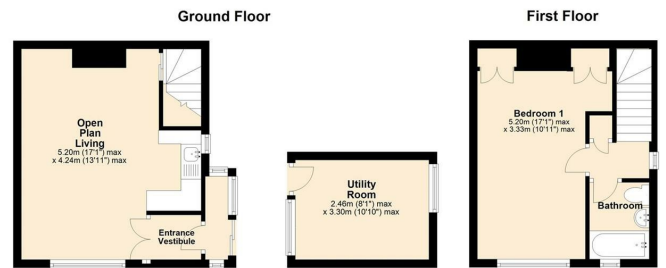
This stone built cottage internally comprises an entrance porch leading into the spacious lounge with an offset kitchen benefitting from base and wall units with tiled splashbacks. To the first floor presents a double master bedroom with integrated wardrobes and a house bathroom benefits from a three-piece suite comprising of WC, wash hand basin and bath.

Externally there's a small south facing garden with exceptional views of surrounding valleys and outbuildings which include a utility washroom.

Location

Occupying a great position within the sought after village of Warley situated close to surrounding areas of Sowerby Bridge and Halifax town centre conveniently positioned for local amenities. The village benefits from popular gastropubs 'The Maypole' and 'The Winterburn'. Access to local train stations at Sowerby Bridge and Halifax, along with access to the M62 motorway to Leeds and Manchester are accessible.

Council tax band: A
EPC rating: E
Deposit: £750



ws-residential.co.uk

01484 711200



These particulars, whilst believed to be accurate are set out as a general outline only for guidance and do not constitute any part of an offer or contract. Intending purchasers should not rely on them as statements of representation of fact, but must satisfy themselves by inspection or otherwise as to their accuracy. No person in this firm's employment has the authority to make or give any representation or warranty in respect of the property.