



4 Farwater Close, Dronfield S18 1RE



Lettings

4 Farwater Close

Per Month

£1,100 Per Month

Tucked away in an enviable position near the head of a quiet cul-de-sac, this beautifully presented three bedroom semi detached home offers a perfect blend of comfort and style.

A welcoming porch opens into a generously sized living room, flowing seamlessly into a spacious dining kitchen and a convenient downstairs bathroom. Upstairs, the property features a large primary double bedroom with a dedicated storage cupboard, two additional well proportioned bedrooms, and an excellently appointed family bathroom. As practical as it is inviting, the home benefits from gas central heating throughout.

Outside, a private driveway provides ample off road parking for multiple vehicles and leads to a garage. To the rear, you will find a delightful, private garden complete with a lawn and a patio area.

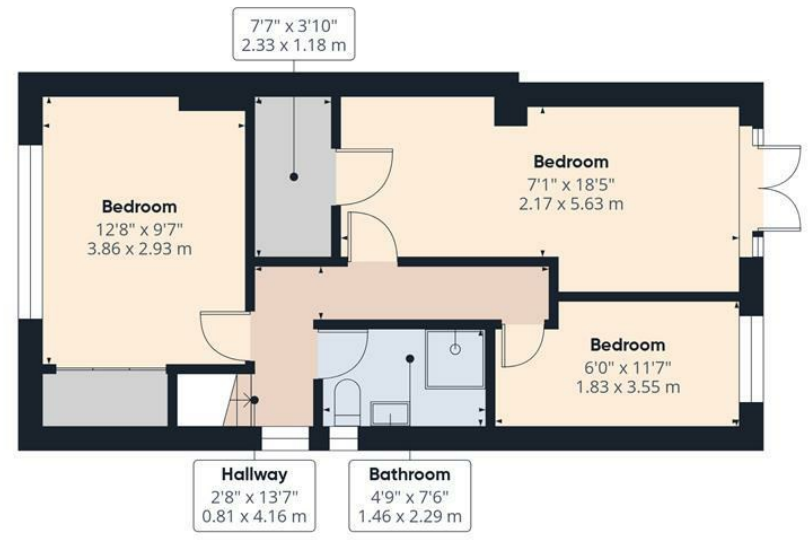
This property is offered unfurnished. Please note that smoking is not permitted within the property. The Energy Efficiency Rating is C and the Council Tax Band is B.







Ground Floor



Floor 1



Approximate total area^m
 974 ft²
 90.4 m²

(1) Excluding balconies and terraces

Calculations reference the RICS IPMS 3C standard. Measurements are approximate and not to scale. This floor plan is intended for illustration only.

GIRAFFE360

While we endeavour to make our sales particulars fair, accurate and reliable, they are only a general guide to the property and, accordingly, if there is any point, which is of particular importance to you, please contact the relevant office. The Agents have not tested any apparatus, equipment, fittings or services and so cannot verify they are in working order. The buyer is advised to obtain verification. Please note all the measurement details are approximate and should not be relied upon as exact. All plans, floor plans and maps are for guidance purposes only and are not to scale. Under no circumstances should they be relied upon as exact or for use in planning carpets and other such fixtures, fittings or furnishings. YOUR HOME IS AT RISK IF YOU DO NOT KEEP UP REPAYMENTS ON A MORTGAGE OR OTHER LOAN SECURED ON IT. 'A Life Assurance policy may be requested.' 'Written Quotations of credit terms available on request.'

Banner Cross
 T: 0114 268 3241
 E: bannercross@saxtonmee.co.uk
www.saxtonmee.co.uk

Hathersage
 T: 01433 650009
 E: hathersage@saxtonmee.co.uk

Bakewell
 T: 01629 815307
 E: bakewell@saxtonmee.co.uk

Matlock
 T: 01629 828250
 E: matlock@saxtonmee.co.uk