

Fords.

SALES | LETTINGS | NEW HOMES



14 Clement Court St. Marks Close, High Wycombe, HP13 6HQ

50% OFF FIRST MONTH'S RENT - AVAILABLE IMMEDIATELY

This two bedroom apartment is located within walking distance to High Wycombe town centre and railway station. The accommodation comprises entrance hallway, open plan fitted kitchen/lounge/dining room, master bedroom with en-suite, additional double bedroom and family bathroom. The property benefits from UPVC double glazing, gas central heating, allocated parking.

£1,500 Per month

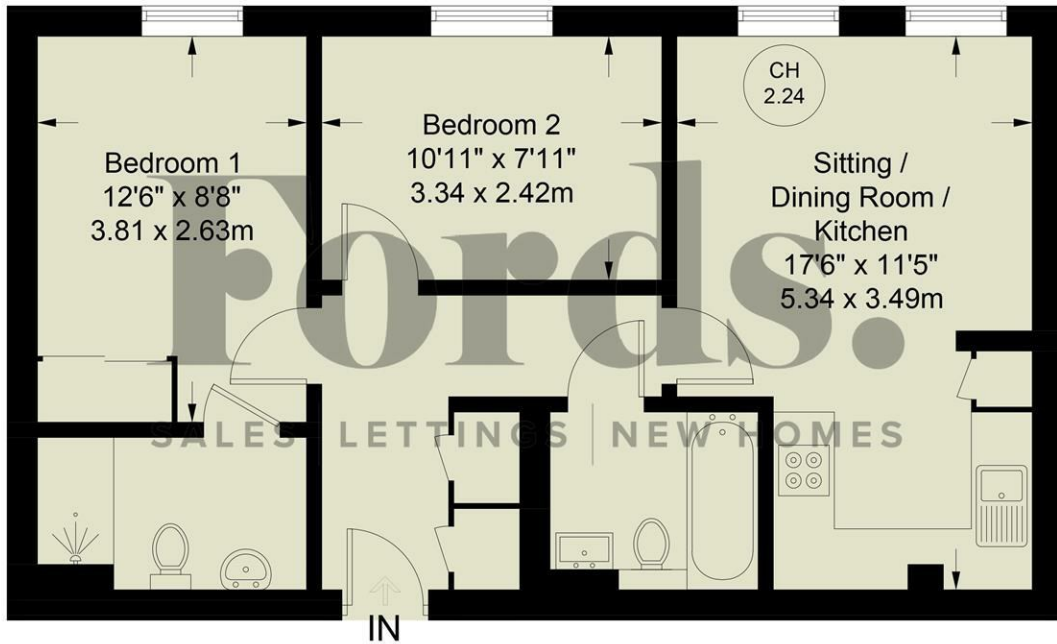
- **50% Off First Month's Rent**
- **2 Double Bedrooms**
- **En-suite off Master**
- **Walk to Train Station**
- **Walk to Town Centre**
- **Top Floor**
- **Allocated Parking**
- **Gas Central Heating**
- **UPVC Double Glazing**
- **Available Immediately**

St. Marks Close

Approximate Gross Internal Area = 576 sq ft / 53.5 sq m



CH 2.24 = Ceiling Height



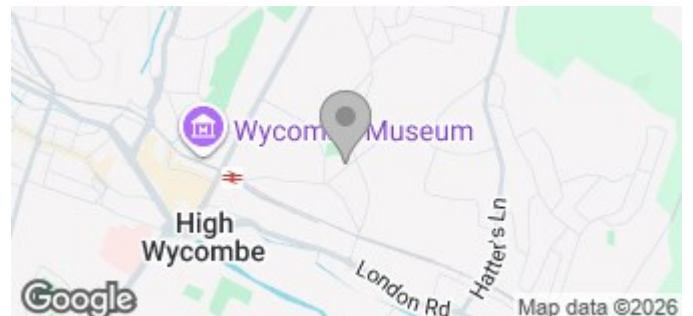
Second Floor

Floor Plan produced for Ford & Partners by Media Arcade ©.

Illustration for identification purposes only. Window and door openings are approximate. Whilst every attempt is made to assure accuracy in the preparation of this plan, please check all dimensions, shapes and compass bearings before making any decisions reliant upon them.

Energy Efficiency Rating		Current	Potential
Very energy efficient - lower running costs			
(92 plus) A			
(81-91) B			
(69-80) C			
(55-68) D			
(39-54) E			
(21-38) F			
(1-20) G			
Not energy efficient - higher running costs			
England & Wales		EU Directive 2002/91/EC	

Environmental Impact (CO ₂) Rating		Current	Potential
Very environmentally friendly - lower CO ₂ emissions			
(92 plus) A			
(81-91) B			
(69-80) C			
(55-68) D			
(39-54) E			
(21-38) F			
(1-20) G			
Not environmentally friendly - higher CO ₂ emissions			
England & Wales		EU Directive 2002/91/EC	



18 Crendon Street, High Wycombe, HP13 6LS

Tel: 01494 840 600 Email: sales@fordandpartners.com www.fordandpartners.com