



COMBE HOUSE COMBE ROAD,
PORTISHEAD, BS20 6BJ

GOODMAN
& LILLEY



A BEAUTIFULLY PRESENTED AND NATURALLY LIGHT-FILLED FIRST FLOOR APARTMENT, OFFERING WELL-BALANCED ACCOMMODATION WITH MODERN FINISHES THROUGHOUT, IDEALLY SUITED TO BOTH FIRST-TIME BUYERS AND INVESTORS ALIKE.

Positioned on the first floor, this well-presented apartment offers thoughtfully arranged accommodation comprising a kitchen, a spacious living/dining room, a utility cupboard, a double bedroom and a contemporary shower room.

The standout feature is the impressive dual-aspect living/dining room, flooded with natural light via three windows, creating a bright and inviting space ideal for both relaxing and entertaining.

The kitchen is fitted with a range of modern white high-gloss wall and base units, offering generous storage and ample worktop space. A useful utility cupboard is accessed from the kitchen, housing the hot water tank and providing space for a washing machine, ensuring practical day-to-day convenience.

The bedroom continues the theme of space and light, benefitting from a dual-aspect arrangement that enhances the sense of openness. Generously proportioned, it is fitted with carpet flooring and offers ample space for a double bed along with a range of freestanding storage furniture.

Completing the accommodation is a well-appointed shower room, fitted with a modern white suite comprising a shower cubicle, wash hand basin and WC, complemented by a heated towel rail. The space is stylishly finished with contemporary grey tiling to both the floor and walls, creating a clean and polished finish.

Outside

Allocated parking for one vehicle, secure bin and bike store.

Agent Notes

-
- First Floor Flat
 - Integrated Appliances
 - No Onward Chain
 - Convenient High Street Location
 - One Double Bedroom
 - Approx. 470 Sq.Ft
 - Allocated Parking Space



GUIDE PRICE £208,500

Tenure: Leasehold with management charges of approximately £900 a year including ground rent per annum.
999 Year Lease.

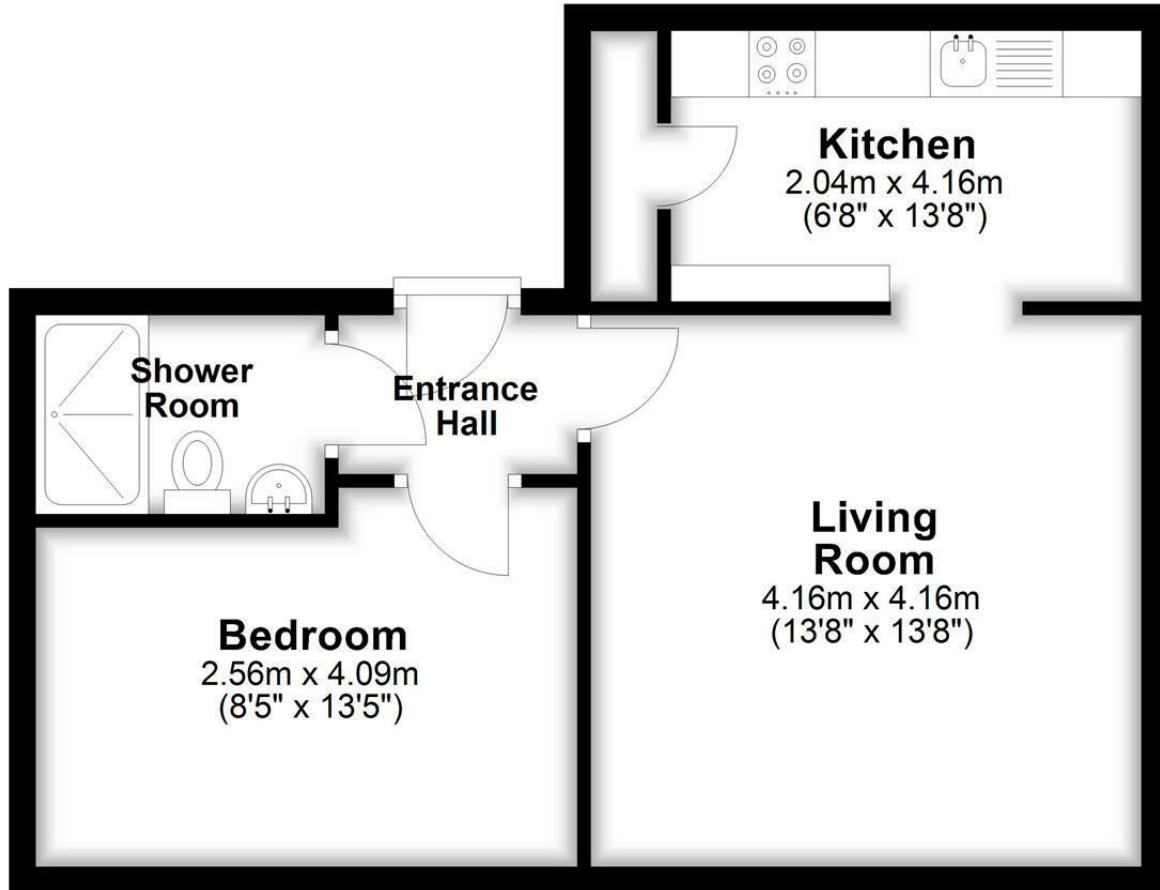
Council Tax Band: B

All viewings strictly by appointment with the agent Goodman & Lilley - 01275 430440



Ground Floor

Approx. 43.7 sq. metres (470.1 sq. feet)



Total area: approx. 43.7 sq. metres (470.1 sq. feet)

HENLEAZE - 0117 2130777
henleaze@goodmanlilley.co.uk

PORTISHEAD - 01275 430440
sales@goodmanlilley.co.uk

SHIREHAMPTON - 0117 2130333
shire@goodmanlilley.co.uk

Zoopla.co.uk

rightmove



WWW.GOODMANLILLEY.CO.UK

These particulars are for general guidance only. They do not form or constitute any part of an offer or contract. Goodman & Lilley has not carried out structural surveys of the property. The services, appliances or specific fittings mentioned in these details have not been tested. Every attempt is made to ensure accuracy, however all photographs, measurements, floor plans and distances are for illustrative purposes only. They must not be relied upon when purchasing carpets and or other fixtures & fittings. Lease details, service charges and ground rents are given as a guide only. They should be checked and confirmed by a licensed solicitor prior to exchange of contracts. The copyright of all details, photographs and floor plans remain exclusive to Goodman & Lilley.