



The Rookery | Jacks Green | Creting St. Mary | IP6 8NF

Guide Price £94,000

**NICHOLAS**  
ESTATES

## Key features

- Coming January 2026
- 40% Shared Ownership
- BRAND NEW HOUSE
- Two Double Bedrooms
- Village Location

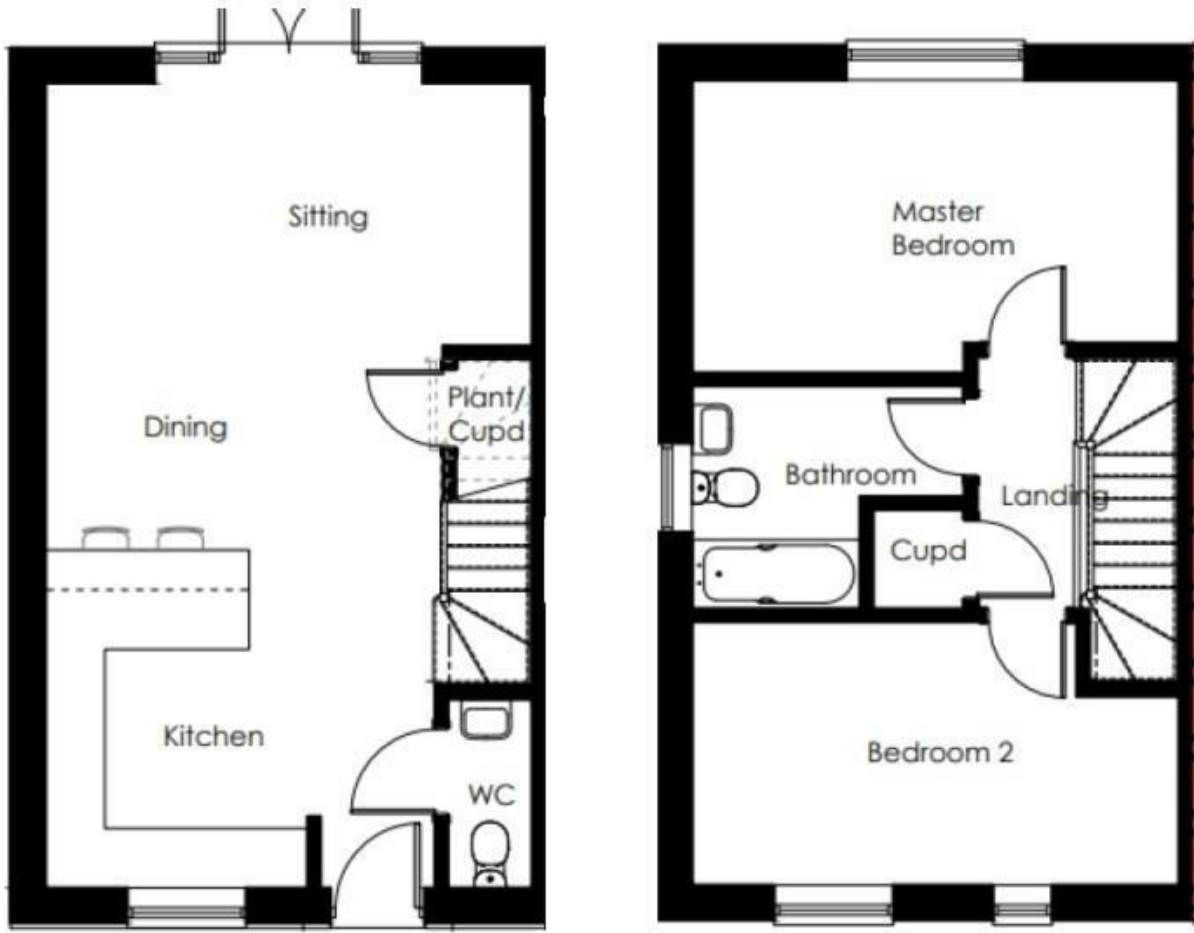
## Description


Nicholas Estates are pleased to be marketing on behalf of Orwell Housing Association, this two bedroom mid-terrace house situated in the popular village of Creting St Mary.

## Directions

Nicholas Estates are pleased to be marketing on behalf of Orwell Housing Association, this two bedroom mid-terrace house situated in the popular village of Creeting St Mary. Available as part of the shared ownership scheme, the asking price represents

Floor plans



Energy Efficiency Rating		
	Current	Potential
<i>Very energy efficient - lower running costs</i>		
(92 plus) <b>A</b>		
(81-91) <b>B</b>		
(69-80) <b>C</b>		
(55-68) <b>D</b>		
(39-54) <b>E</b>		
(21-38) <b>F</b>		
(1-20) <b>G</b>		
<i>Not energy efficient - higher running costs</i>		
<b>England &amp; Wales</b>	EU Directive 2002/91/EC 	

Council Tax Band      EPC Rating

# NICHOLAS

— ESTATES —

173 Hamilton Road  
 Felixstowe  
 Suffolk  
 IP11 7DR  
 01394 282828  
 felixstowe@yourhome.co.uk  
 yourhome.co.uk