



Jordan fishwick

VICTORIA PARK
Anson Road



Anson Road, Victoria Park, M14 5BP

£1,225 Per Calendar Month



The Property

*** AVAILABLE AUGUST *** A beautifully presented two double bedroom apartment on the top floor of this purpose-built apartment block. This property briefly comprises of a modern fully equipped kitchen opening onto a spacious lounge. This leads onto a three-piece bathroom suite and two double bedrooms with integrated storage. The property is situated within walking distance into Longsight and all required amenities. Furnished. If you are interested in this property, please contact our Didsbury office.

Unallocated onsite parking subject to availability. Residents permit required. Please note that permits are available to tenants so long as you live at the property but does not guarantee location or availability of a space and is only valid for the car parking of the property, and not the on-road parking. On street parking available without the need for a permit from the council, at the time of writing.

View our Virtual Tour Here - <https://youtu.be/nSqGQAL-Tho>

EPC Rating - C // Council Tax Band - B

Directions

M14 5BP



- Available August
- Two Double Bedrooms
- Furnished
- Top Floor Apartment
- Modern Decor Throughout
- Close to all Local Amenities
- Communal Gardens
- Permit Parking Available
- Council Tax Band - B
- EPC Rating - C

Postcode - M14 5BP

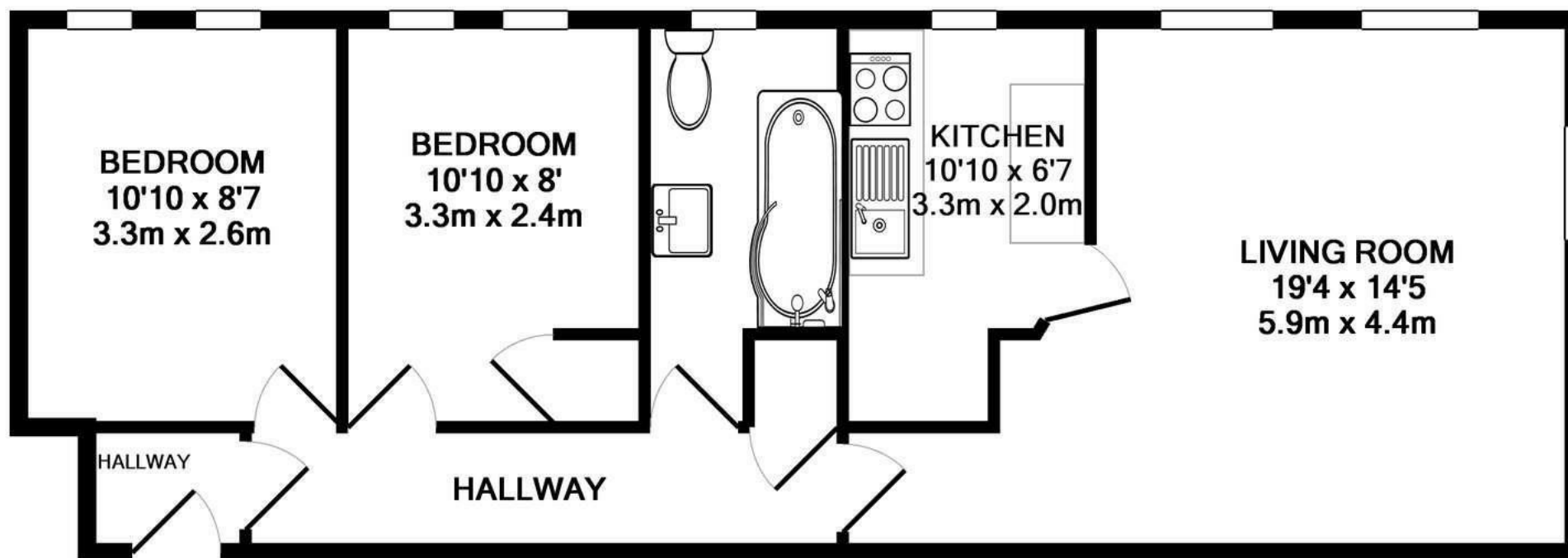
EPC Rating - C

Floor Area - sq ft

Local Authority - Manchester

Council Tax - B





FLAT 20, 32 ANSON ROAD
 TOTAL APPROX. FLOOR AREA 575 SQ.FT. (53.4 SQ.M.)

Whilst every attempt has been made to ensure the accuracy of the floor plan contained here, measurements of doors, windows, rooms and any other items are approximate and no responsibility is taken for any error, omission, or mis-statement. This plan is for illustrative purposes only and should be used as such by any prospective purchaser. The services, systems and appliances shown have not been tested and no guarantee as to their operability or efficiency can be given

Made with Metropix ©2014



These particulars are believed to be accurate but they are not guaranteed and do not form a contract. Neither Jordan Fishwick nor the vendor or lessor accept any responsibility in respect of these particulars, which are not intended to be statements or representations of fact and any intending purchaser or lessee must satisfy himself by inspection or otherwise as to the correctness of each of the statements contained in these particulars. Any floorplans on this brochure are for illustrative purposes only and are not necessarily to scale.

Offices also at: Wilmslow, Macclesfield, Hale, Sale, Chorlton, Glossop, Manchester & Salford

757-759 Wilmslow Road, Didsbury Village, Manchester

0161 445 4480

didsbury@jordandfishwick.co.uk
 www.jordandfishwick.co.uk