



**Connells**

King Edward Avenue  
Southampton

King Edward Avenue  
Southampton SO16 4DL

for sale  
£370,000



### Property Description

Connells are marketing this well-presented three-bedroom detached bungalow with NO CHAIN on King Edward Avenue, one of the most sought-after roads in Regents Park, offering a bright and versatile layout, perfect for those seeking comfort and convenience. The living room is spacious with large windows and a sliding door direct to the rear garden. The lounge flows effortlessly into the modern kitchen, great for hosting and entertaining, and offers neutral cabinetry, ample cupboard and counter space, integrated oven and microwave with room for freestanding appliances, and garden access also. The garden is arranged over two tiers, with a decked seating area, great for relaxing with a lawn on the lower tier, making this garden great for all activities. All three bedrooms are doubles, with the master benefitting from a bay window and the others having built-to storage. The wet room is a contemporary three-piece and includes a shower, hand-wash basin, toilet, and ample built-in storage. Further features are gas central heating, double glazing, ample storage and driveway parking.



Situated within walking distance of Shirley High Street, residents have access to a variety of shops, restaurants, and supermarkets. Excellent transport links include easy access to the M271 and M27, making this home ideal for commuters. Westquay Shopping Centre and Southampton Common are both within a 10-minute drive, offering shopping, dining, and green spaces for leisure and relaxation.

## Living Room

19' 8" x 9' 10" ( 5.99m x 3.00m )

Has Garden Access

## Kitchen

19' 8" x 7' 9" ( 5.99m x 2.36m )

Fitted with Neutral Cabinetry, Integrated & Freestanding Appliances and Garden Access

## Bedroom 1

14' 2" x 12' 10" ( 4.32m x 3.91m )

Has Bay Window

## Bedroom 2

13' 1" x 11' 1" ( 3.99m x 3.38m )

Has Built-To Storage

## Bedroom 3

11' 1" x 10' 11" ( 3.38m x 3.33m )

Has Built-To Storage

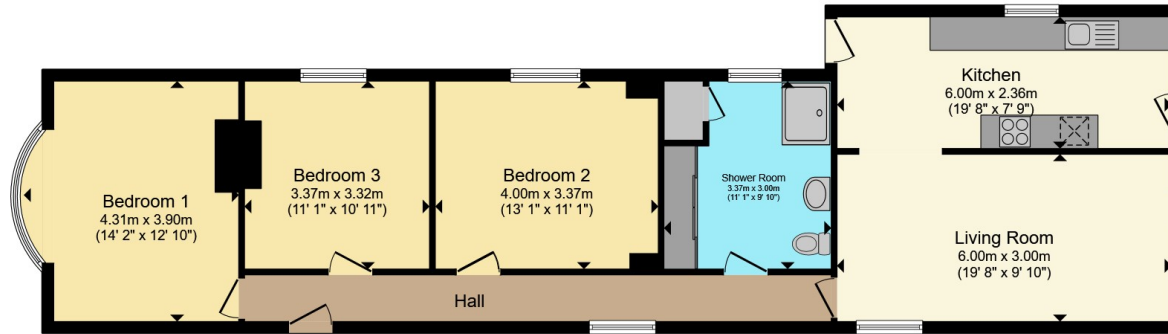
## Wet Room

11' 1" x 9' 10" ( 3.38m x 3.00m )









Total floor area 94.4 m<sup>2</sup> (1,016 sq.ft.) approx

This floor plan is for illustrative purposes only. It is not drawn to scale. Any measurements, floor areas (including any total floor area), openings and orientation are approximate. No details are guaranteed, they cannot be relied upon for any purpose and they do not form part of any agreement. No liability is taken for any error, omission or misstatement. A party must rely upon its own inspection(s). Powered by [www.propertybox.io](http://www.propertybox.io)



To view this property please contact Connells on

**T 02380 789 351**  
**E [shirley@connells.co.uk](mailto:shirley@connells.co.uk)**

409 Shirley Road Shirley  
 SOUTHAMPTON SO15 3JD

EPC Rating: D Council Tax  
 Band: D

Tenure: Freehold

**view this property online [connells.co.uk/Property/SSR312375](http://connells.co.uk/Property/SSR312375)**



1. MONEY LAUNDERING REGULATIONS Intending purchasers will be asked to produce identification documentation at a later stage and we would ask for your co-operation in order that there will be no delay in agreeing the sale. 2. These particulars do not constitute part or all of an offer or contract. 3. The measurements indicated are supplied for guidance only and as such must be considered incorrect. Potential buyers are advised to recheck measurements before committing to any expense. 4. We have not tested any apparatus, equipment, fixtures, fittings or services and it is in the buyers interest to check the working condition of any appliances.

Connells Residential is registered in England and Wales under company number 1489613, Registered Office is Cumbria House, 16-20 Hockliffe Street, Leighton Buzzard, Bedfordshire, LU7 1GN. VAT Registration Number is 500 2481 05.

**See all our properties at [www.connells.co.uk](http://www.connells.co.uk) | [www.rightmove.co.uk](http://www.rightmove.co.uk) | [www.zoopla.co.uk](http://www.zoopla.co.uk)**

Property Ref: SSR312375 - 0005