



Maybush Road, Southampton, SO16
Southampton

£325,000

Property Type: Terraced House

Bedrooms: 3 | Bathrooms: 2 | Receptions: 1

Hamwic are delighted to present this beautifully modernised three-bedroom terraced home, ideal for first-time buyers seeking a stylish turnkey property. The home offers a refitted kitchen-dining room, elegant lounge, modern shower room, landscaped low-maintenance garden with insulated entertainment cabin, off-road parking, double glazing, gas central heating and a replaced roof, ready to move straight into and enjoy!



- Beautifully Modernised Three Bedroom Home
- Stylish Refitted Kitchen Dining Room
- Separate Lounge With Decorative Panelling
- Modern Refitted Shower Room
- Herringbone LVT Flooring Throughout Ground Floor
- Landscaped Low Maintenance Rear Garden
- Impressive Insulated Entertainment Cabin
- Brick Set Driveway Providing Off Road Parking
- Double Glazing Gas Central Heating And Replaced Roof
- Turnkey Home Ready To Move Straight Into

A Stylishly Refurbished Home Designed For Modern Living

Location - Maybush Road is conveniently situated within the popular Maybush area of Southampton, offering easy access to Southampton General Hospital, local schools, supermarkets and amenities. Excellent transport links provide convenient connections to the M27, M271 and Southampton city centre, making the location ideal for both commuters and families.





Property Overview - The property enjoys a smart frontage with a newly laid brick-set driveway providing off-road parking. A shared side access leads conveniently to the rear garden, while a composite front door with opaque glazed panels opens into a useful entrance porch, ideal for coats and shoes.

Stepping inside, the welcoming hallway immediately sets the tone for the home, with attractive herringbone LVT flooring flowing seamlessly through the ground floor and into the kitchen-dining area. The staircase features a modern glass and oak balustrade with cleverly concealed push-fit storage beneath, while oak internal doors add a refined finish throughout.

To the front of the property sits the comfortable lounge, a warm and inviting space enhanced by decorative wall panelling, soft carpet flooring and stylish window shutters that complement the large double-glazed window.

At the rear of the home lies the beautifully refitted kitchen-dining room, the heart of the property and a fantastic space for everyday living and entertaining. The modern kitchen features white gloss cabinetry paired with wood-effect work surfaces, extending into a breakfast bar with seating recess and pendant lighting above. Integrated appliances include an induction hob and electric oven, with additional space for an American-style fridge/freezer, washing machine and an integrated tumble dryer. A vertical radiator and generous dining space complete the room, while double doors and a rear window provide direct access and views into the garden.

First Floor Accommodation - Upstairs, three well-proportioned bedrooms provide comfortable and flexible living space. Each room benefits from double glazed windows with fitted shutters, radiators and carpet flooring, creating a warm and cohesive feel throughout the first floor.

The principal bedroom overlooks the rear garden and features a built-in triple wardrobe with mirrored sliding doors, along with an airing cupboard housing the gas combi boiler and additional storage. Bedroom two enjoys a front-facing window and built-in wardrobe, while bedroom three also faces the front and offers versatility as a nursery, guest bedroom, dressing room or home office.

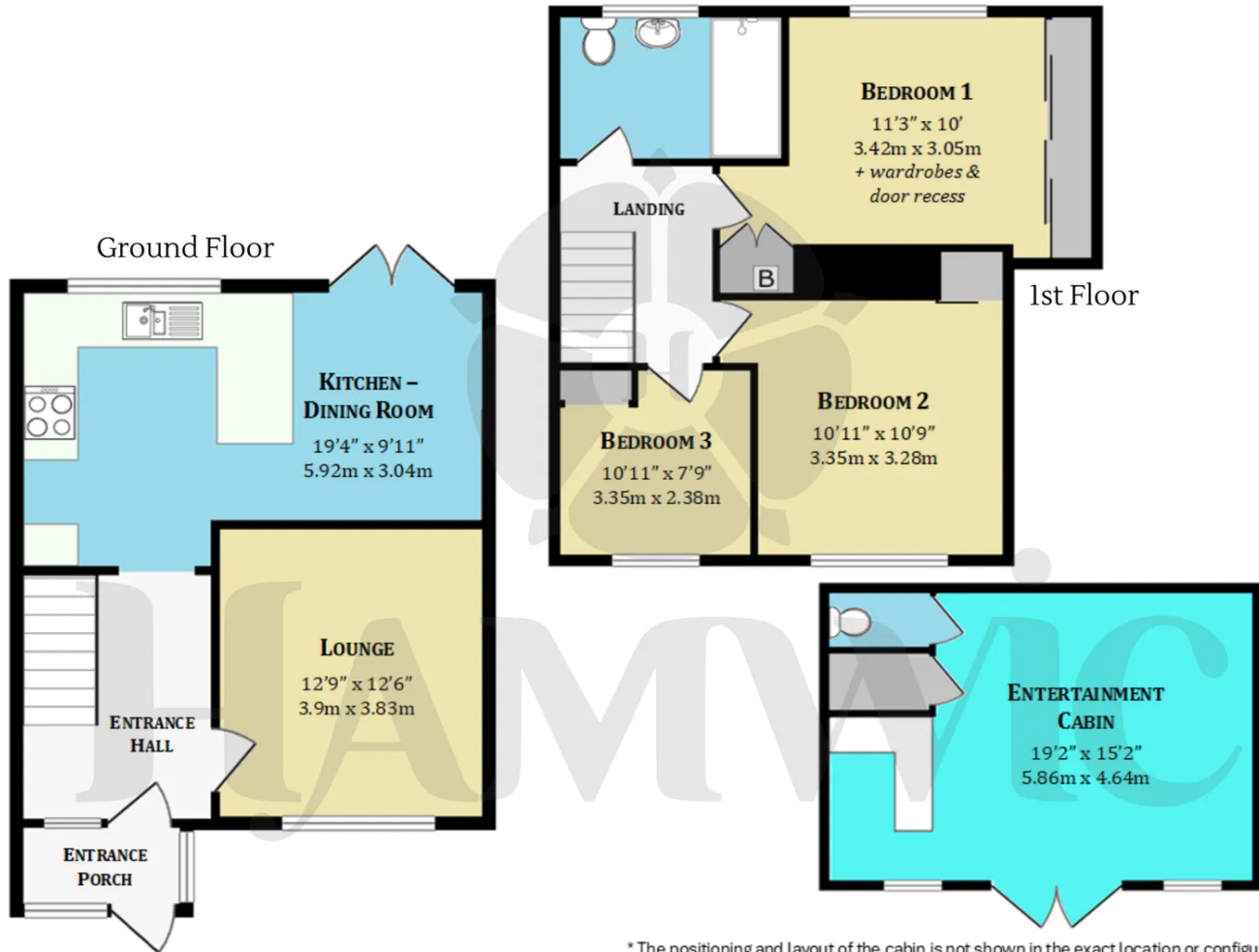
The refitted shower room is finished to a modern standard, featuring a walk-in shower enclosure with glass screen and waterproof wall panelling, vanity wash basin, WC, heated towel rail and stylish LVT flooring.

Outdoor Living & Entertainment - The landscaped rear garden has been designed for easy maintenance and relaxed outdoor living. A generous paved patio sits directly outside the kitchen doors, there is a covered timber pergola that creates an ideal seating or dining area. The remainder of the garden is laid to artificial turf with a pathway leading to the impressive entertainment cabin.

Positioned at the rear of the garden, the fully insulated cabin offers a fantastic multi-purpose space. Perfect as a home office, bar, gym or social area. Finished internally with smooth ceilings, downlights and laminate flooring, it also includes a kitchenette/bar area with water feed, storage cupboard and a separate cloakroom with WC. Double glazed double doors and windows to the front allow natural light to flood the space, creating a highly usable extension of the home.

Tenure: Freehold / **Council Tax Band:** C





* The positioning and layout of the cabin is not shown in the exact location or configuration and should not be relied upon as an accurate representation.

All measurements are approximate and for guidance only. Floorplans are not to scale and should not be relied upon as exact representations. Fixtures, fittings, and services have not been tested. Purchasers must verify the accuracy of all information and satisfy themselves before proceeding. Hamwic Independent Estate Agents Ltd accepts no liability for errors or omissions.



Score	Energy rating	Current	Potential
92+	A		
81-91	B		86 B
69-80	C	71 C	
55-68	D		
39-54	E		
21-38	F		
1-20	G		

Trusted. Award Winning. Experts.

Hamwic Estate Agents

3 - 4 South Parade, Salisbury Road, Southampton SO40 3PY

02380 663999

enquiries@hamwicestateagents.co.uk

<https://www.hamwicestateagents.co.uk/>

