


## Colebrook Place, Leyman Close

£340,000

 3  1  1



**50% ALREADY SOLD OFF PLAN** - This is one of the 12 beautifully designed three bedroom new build home at Damson Court, Leyman Close, Yardley Wood, within an exclusive development of just 14 properties. Offering modern living, two allocated parking spaces, and a quiet residential setting close to local amenities and transport links. Predicted completion Spring 2026. Get in touch today to find out more on 0121 744 4144 option 3

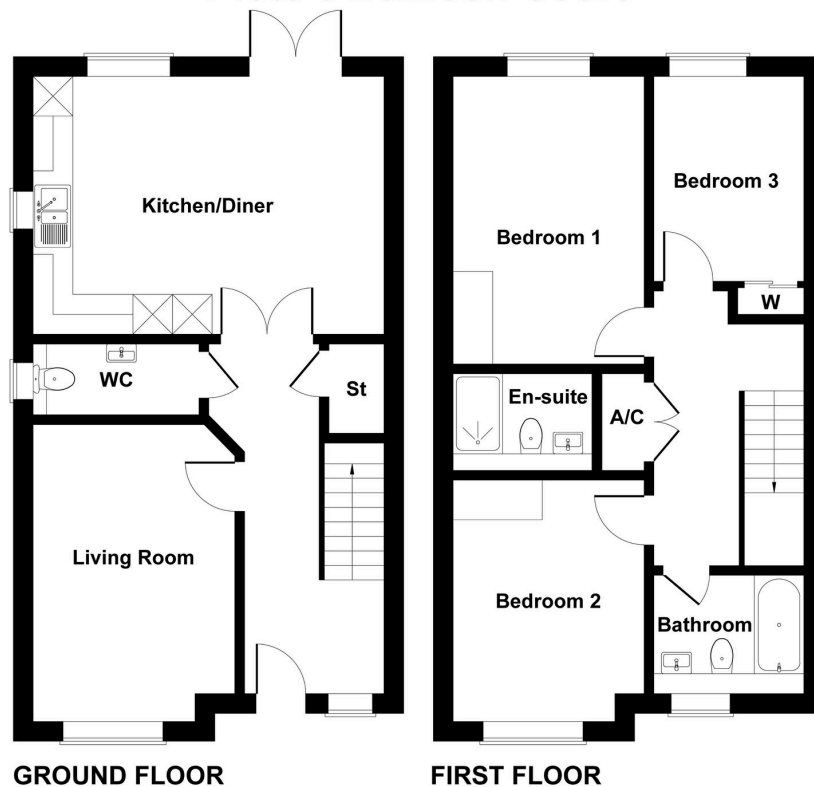
3 Union Road, Shirley, Solihull B90 3BT

sales • new homes • land • commercial • mortgages • auction

## Key Features

- 50% SOLD OFF PLAN - RESERVE NOW
- Fitted wardrobes and bedroom furniture
- EV charging point
- 10 Year Build Warranty
- Security systems set in place
- 2 Allocated parking spaces
- Great transport links nearby
- Development of 14 beautiful homes
- Ample storage space
- Estimated completion date - Spring 2026

## Plots 3 Damson Court



GROUND FLOOR

FIRST FLOOR

Not to Scale. Produced by The Plan Portal 2026  
For Illustrative Purposes Only.