



Whinfell Close, SW16

£995,000

A wonderful five-bedroom family home, offered to the market with no onward chain, boasting a large landscaped garden and generous living space arranged over three floors.

The ground floor features an impressive open-plan kitchen/reception room, creating an ideal space for modern family living and entertaining, with doors leading directly out to the garden. A convenient downstairs bathroom completes this level. The landscaped garden provides excellent outdoor space and further benefits from a versatile garden room perfect for use as a home office, gym, or studio.

On the first floor, there are three well-proportioned double bedrooms served by a contemporary family bathroom. Occupying the top floor is a superb primary suite, comprising a spacious bedroom, en-suite bathroom, walk-in wardrobe, and useful eaves storage. This is a fantastic opportunity to acquire a substantial family home.

Whinfell Close is a small, quiet cul-de-sac consisting of houses tucked away just off Riggindale Road, close to Tooting Bec Common. The popular Tooting Bec Lido is also just a short walk away, ideal for year-round swimming and leisure. Whinfell Close is well positioned within easy reach of Tooting, Balham and Streatham, all boasting an excellent selection of shops, restaurants, cafés and other local amenities, making this a highly convenient and well-connected location.

Features

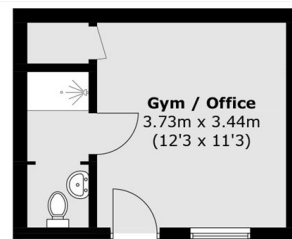
Five Bedrooms
Private Garden
Over 1,908 sq ft
Outbuilding
Parking
No Onward Chain



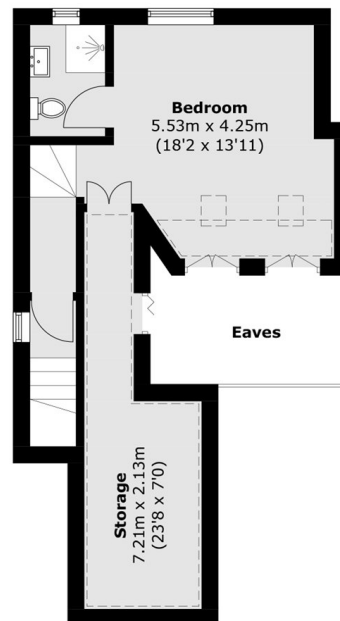
Whinfell Close, SW16



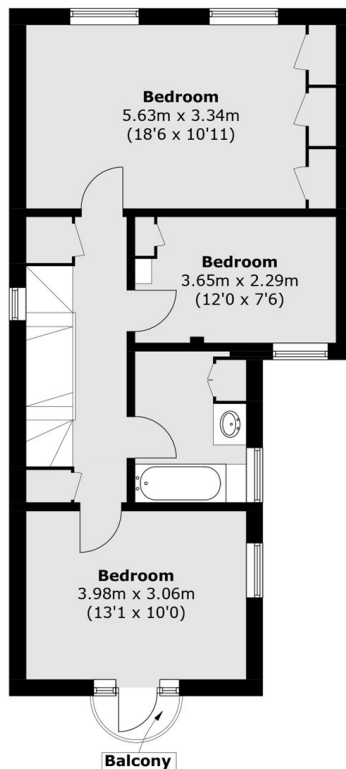
Whinfell Close, London, SW16



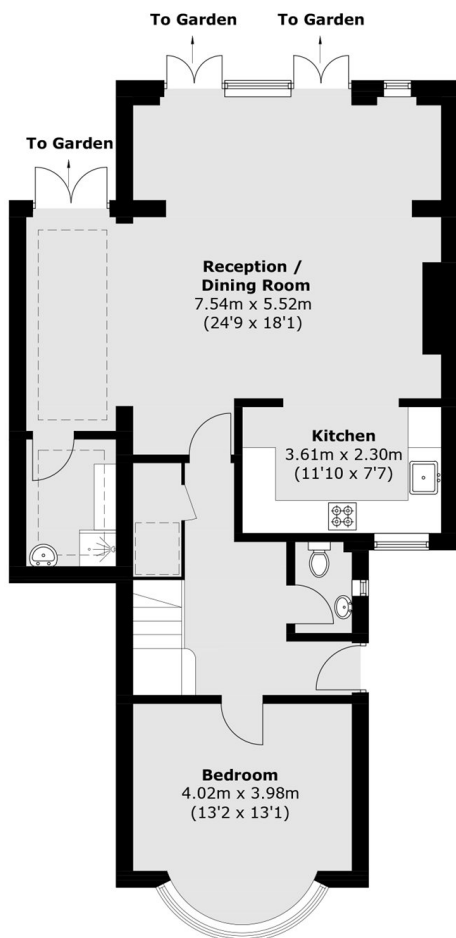
Outbuilding



Second Floor



First Floor



Ground Floor

Total area (approx.): 177.3 sq. m (1,908.4 sq. ft)
 Outbuilding: 17.7 sq. m (190.5 sq. ft)
 Balcony: 1.0 sq. m (10.7 sq. ft)
 (Excluding Eaves)