



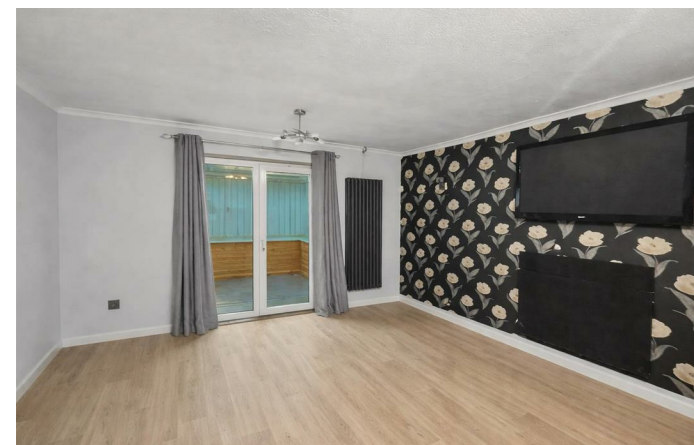
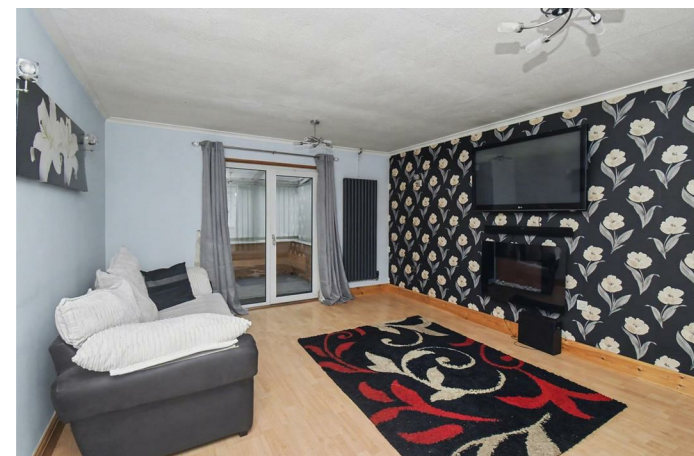
15 Spilsby Close  
Corby, NN18 9HS



**Simpson West**



Conveniently located in close proximity to local schools, amenities and transport links, this three-bedroom end of terrace home is being offered to the market with NO ONWARD CHAIN and offers a fantastic opportunity for a first time buyer or investor looking to add value. The ground floor includes a spacious lounge, utility, a kitchen/diner with access to the rear garden, conservatory and a hallway with storage and downstairs w/c. Upstairs offers two double bedrooms, a spacious third bedroom, and a family bathroom. Outside, the property benefits from a low maintenance rear garden. Offered with no onward chain this property represents an excellent opportunity for a buyer to secure a property in a truly convenient Corby location. Early viewings are highly recommended. EPC rating- TBC. Council Tax Band - A.



£165,000



3

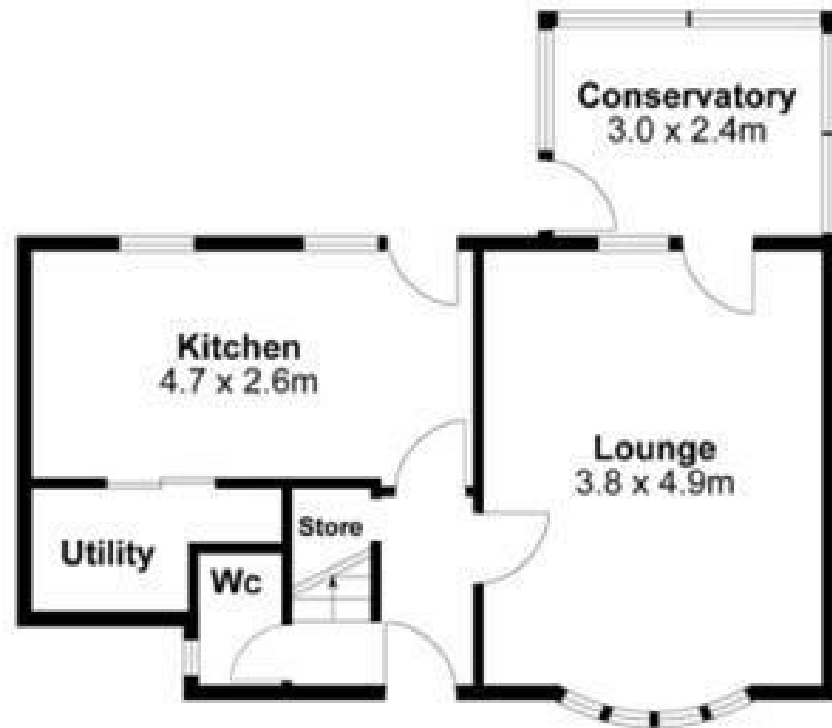


1



2





**Ground Floor**



**First Floor**



Energy Efficiency Rating		
	Current	Potential
Very energy efficient - lower running costs		
(92 plus) <b>A</b>		
(81-91) <b>B</b>		
(69-80) <b>C</b>		
(55-68) <b>D</b>		
(39-54) <b>E</b>		
(21-38) <b>F</b>		
(1-20) <b>G</b>		
Not energy efficient - higher running costs		
<b>England &amp; Wales</b>	EU Directive 2002/91/EC	





When you buy with Simpson West, you know **you'll be in safe hands**. From the moment you walk through our doors, we'll make you **feel truly welcome**. Our sales consultants and financial advisors will take you through **every step of the process**, offering **free expert advice** along the way, from help choosing the right mortgage and insurance through to finding your conveyancer. And if you need help selling your home too, **with over 20 years of local experience, you can trust us to get you moving**.



**Simpson  
West**

Making Every  
Journey Personal



01536 202007

[info@simpsonwest.co.uk](mailto:info@simpsonwest.co.uk)

<https://www.simpsonwest.co.uk/>

64 Corporation Street, Corby, Northants, NN17 1NH