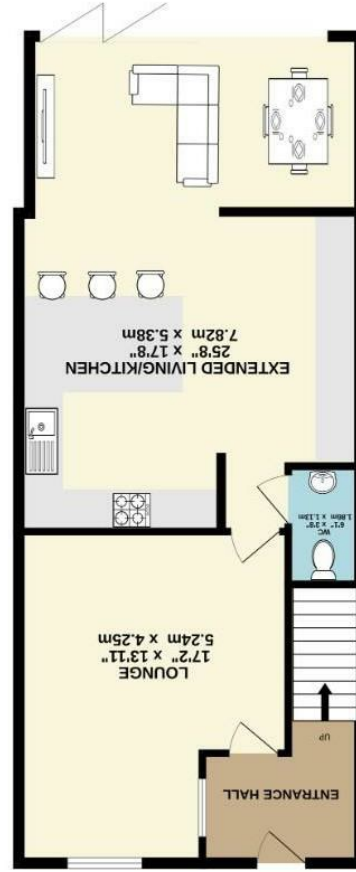
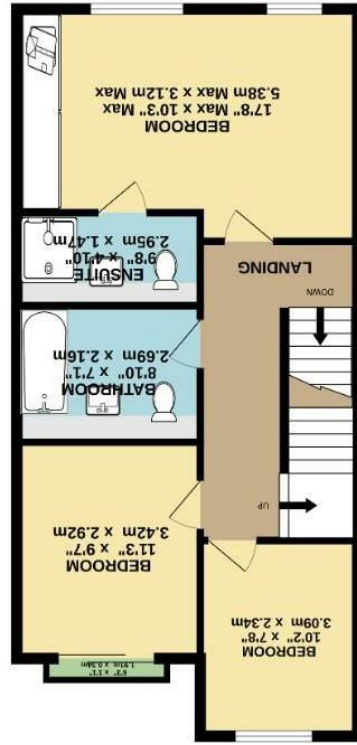
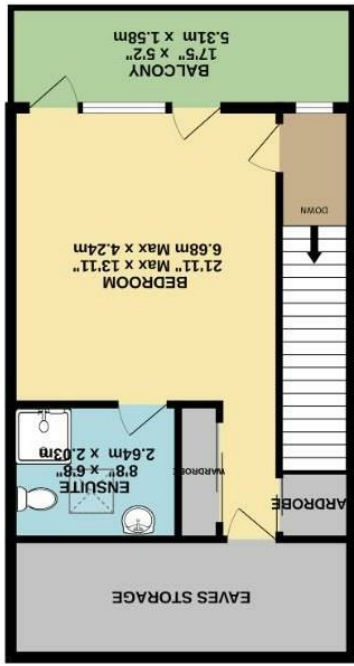




TOTAL FLOOR AREA: 1872 sq ft. (173.9 sq m.) approx.  
Measurements are approximate. Not to scale. Illustrative purposes only.  
Made with Mapbox ©2025





The Boulevard, West Didsbury  
M20 2EU

£600,000



### The Property

Deceptively spacious is a word that can be genuinely used to describe this superb, extended, semi-detached townhouse offering over 1850 sq ft of living space on three floors, presented to an extremely high standard with quality fittings throughout and an ideal location which is just a short stroll to Burton Road and its array of cafés, restaurants & independent shops, and within close proximity of Cavendish Road Primary and Didsbury High School.

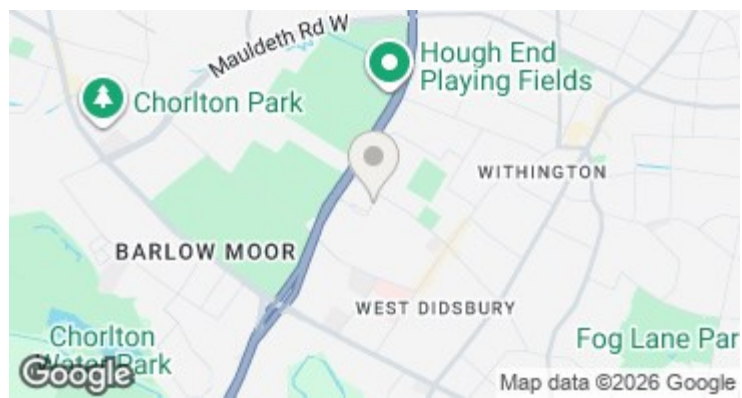
The numerous noteworthy features include an impressive, extended, open plan living/kitchen area with a comprehensive range of units, matching breakfast bar and bi-fold doors to the enclosed rear garden, a generous front reception room and downstairs WC. The first floor provides three excellent double bedrooms, the main with en-suite shower room and fitted wardrobes, and the family bathroom, whilst on the second floor is an impressive master bedroom with en-suite shower room, dressing area with fitted wardrobes, excellent eaves storage space and a nice sized balcony with elevated views.

Externally, there is an enclosed and easy to maintain garden, with useful brick store (11'8" x 5'2"), allocated gated parking for two vehicles beyond and a small garden area to the front.

**\*\*FREEHOLD\*\*NO CHAIN\*\***

### Directions

M20 2EU



- Impressive semi detached townhouse
- Full-width ground floor extension
- Living space over three floors
- Four excellent double bedrooms
- Three bathrooms & downstairs WC
- Superb open plan living kitchen
- Generous balcony & eaves storage
- Enclosed garden & brick store
- Gated allocated parking
- Great location in West Didsbury

Postcode - M20 2EU

EPC Rating - C

Floor Area - 1872.00 sq ft

Local Authority - Manchester City Council

Council Tax - F

