

Damac Tower, SW8



A 3 bedroom apartment designed by Versace Home on the 47th floor of the iconic DAMAC Tower perfectly positioned in Nine Elms offering breathtaking vistas and Five Star facilities.

DAMAC Tower is perfectly positioned within Nine Elms and is the newest addition to London's skyline, opening out to breathtaking vistas from every aspect. The views cover the iconic Battersea Power Station, up the river Thames to the city and beyond.

1433.75 sq ft | RECEPTION ROOM | 3 BEDROOMS | 3 BATHROOMS | WINTER GARDEN | KITCHEN | FACILITIES | PARKING

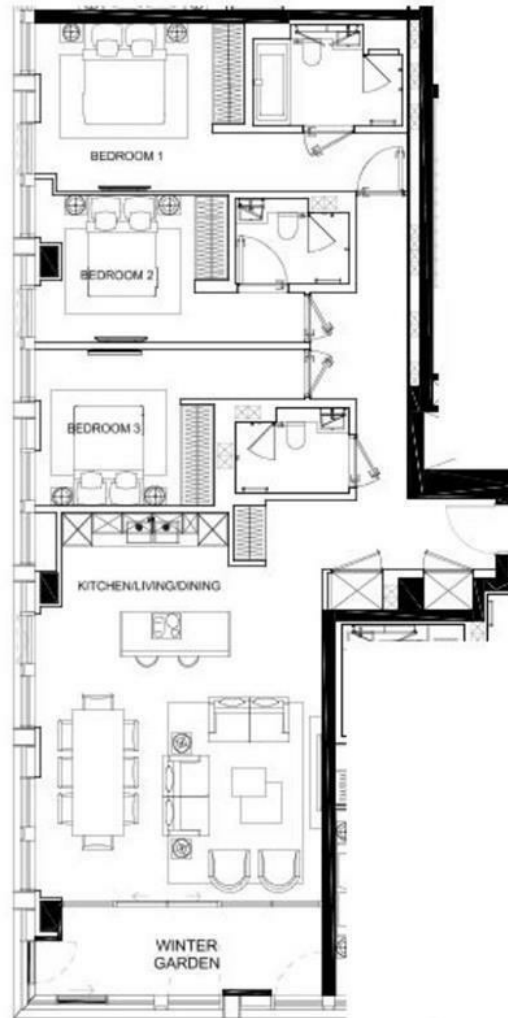


Guide Price £2,480,000

020 7937 9070
www.croft-international.com

Leasehold





KEY PLAN
Date: May 2022

UNIT	05	3B-E.4
Kitchen/Living/Dining		18' 7" x 25' 2"
Bedroom 1		11' 6" / 24' 2" x 11'
Bedroom 2		10' 4" / 17' 6" x 9' 9"
Bedroom 3		9' 5" / 17' 6" x 10' 3"
Apartment Area		1325.27 sq'
Winter Garden		104.41 sq'
Total Area		1432.68 sq'

AYK/43/4305

