



## 2 The Poplars

Mill Road Bethersden, TN26 3DA

65% Shared ownership £211,250

### 65% SHARED OWNERSHIP

Detached two bedroom bungalow in quiet location, close to the centre of this popular village.

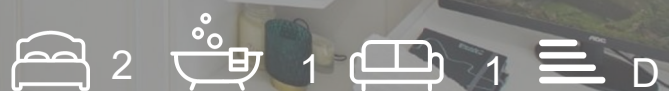
Constructed in the 1980's this bungalow is freehold but subject to a Section 106 Agreement with Ashford Borough Council and is offered at a discounted price of £211,250 for a 65% share of the property.

The property comprises hallway, lounge/diner, kitchen, conservatory, two bedrooms, bathroom, sunny enclosed rear garden and parking for two vehicles. Economy 7 heating and UPVC double glazing.

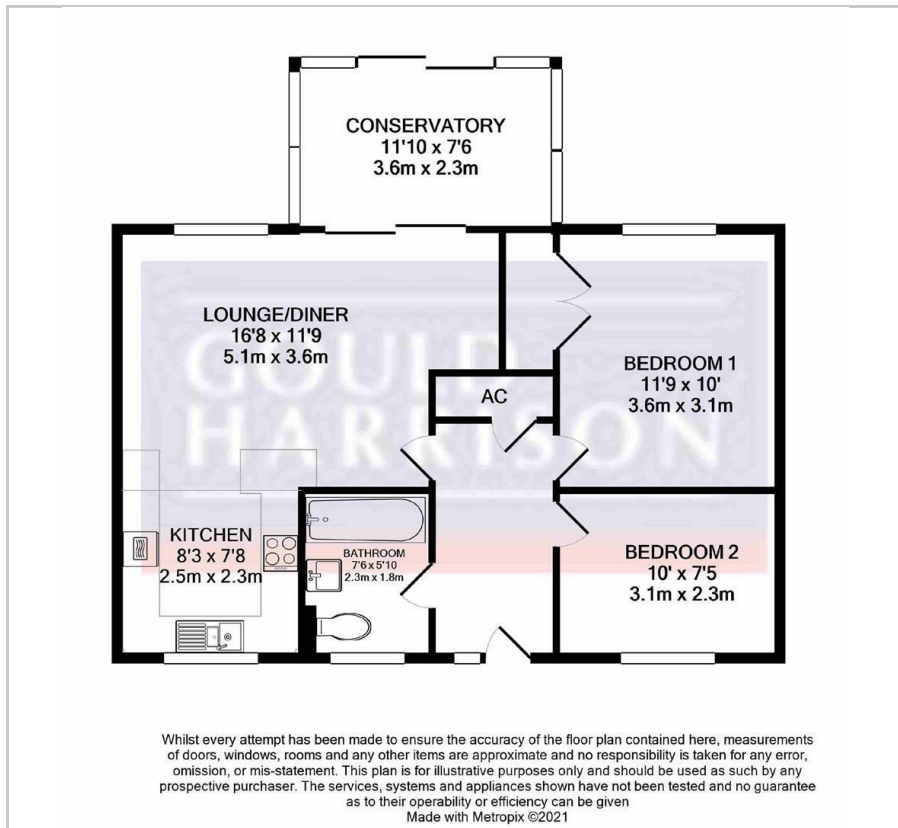
### Viewing

Please contact our Ashford Office on 01233 646411 if you wish to arrange a viewing appointment for this property or require further information.

- DETACHED BUNGALOW
- TWO BEDROOMS
- 65% SHARE OF PROPERTY
- QUIET LOCATION IN POPULAR VILLAGE
- VERY WELL PRESENTED
- OPEN PLAN KITCHEN/LIVING SPACE
- DRIVEWAY FOR TWO CARS
- DOUBLE GLAZED CONSERVATORY
- PLEASE SEE CONDITIONS OF PURCHASE



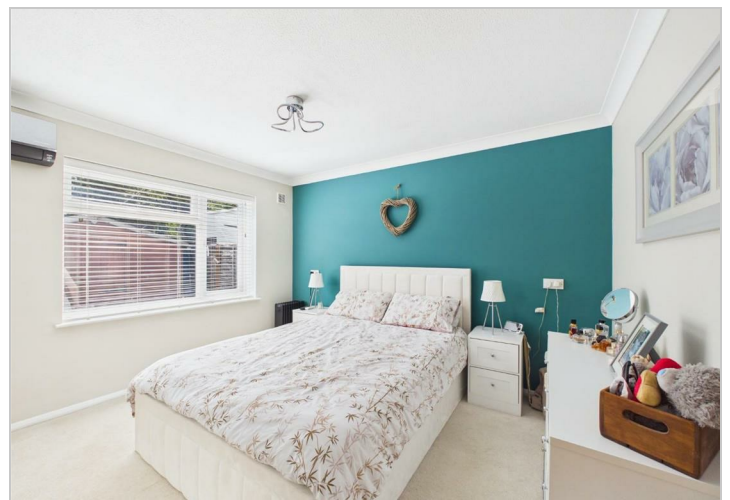
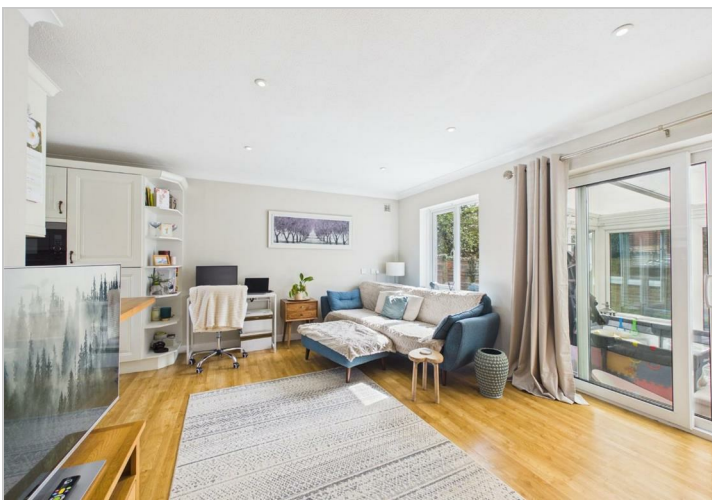
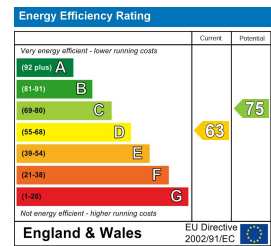
# Floor Plan



# Area Map



# Energy Efficiency Graph



These particulars, whilst believed to be accurate are set out as a general outline only for guidance and do not constitute any part of an offer or contract. Intending purchasers should not rely on them as statements of representation of fact, but must satisfy themselves by inspection or otherwise as to their accuracy. No person in this firm's employment has the authority to make or give any representation or warranty in respect of the property.