

Buy. Sell. Rent. Let.



Mulberry Close, Keelby



3



1

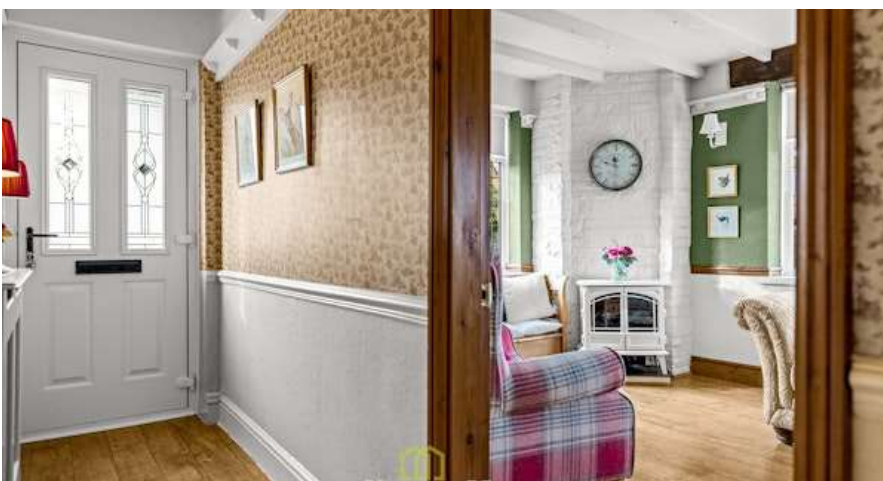


1

When it comes to  
property it must be

  
lovelle





**£189,950**



This immaculately presented three-bedroom detached house offers charming character, spacious living areas, and a desirable corner plot close to amenities, schools, and transport—making it ideal for families and first-time buyers.

#### Key Features

- Detached House
- Three Bedrooms
- Cottage Vibe, Immaculately Kept
- Generous Corner Plot, Drive & Garage
- Popular Village Location
- uPVC DG & GCH
- EPC rating C
- Tenure: Freehold









**\*NO CHAIN\*** Presenting this immaculate detached three-bedroom house, situated on a desirable corner plot within the sought-after Keelby village. Perfectly suited for first time buyers and families alike, this property offers exceptional access to local amenities, reputable schools, inviting walking routes, and convenient public transport links.

Upon arrival, the property impresses with its charming cottage vibe, complemented by a well-stocked garden, a spacious driveway and a garage, ideal for secure parking and additional storage. The home is immaculately kept throughout, benefitting from uPVC double glazing and efficient gas central heating.

The characterful lounge is a delightful space for relaxation, featuring dual aspect windows that bathe the room in natural light and distinctive features that bring warmth and personality. The country-style kitchen boasts attractive units, a Rangemaster oven, and included appliances such as a washer and fridge. The adjoining dining space offers a pleasant area for informal family meals.

Upstairs, you will find three appealing bedrooms: two generous doubles—one with built-in wardrobes—and a comfortable single bedroom, all well-proportioned and freshly presented. The family bathroom features a shower over bath, a classic sink and WC, and is finished with traditional tiling for a timeless aesthetic.

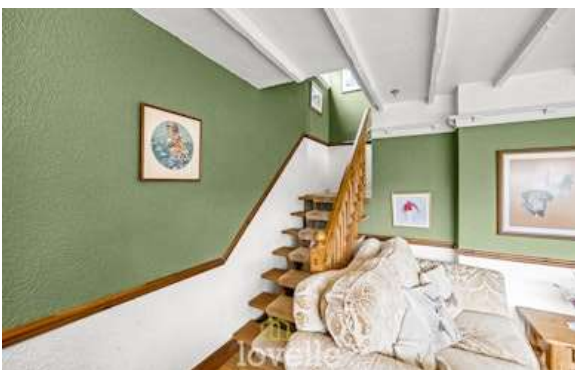
This superb home stands out for its immaculate condition, character, and versatile living spaces in a tranquil yet well-connected setting. Early viewing is highly recommended to fully appreciate all this charming property has to offer.

## Disclaimer

We endeavour to make our sales particulars accurate and reliable, however, they do not constitute or form part of an offer or any contract and none is to be relied upon as statements of representation or fact. Any services, systems and appliances listed in this specification have not been tested by us and no guarantee as to their operating ability or efficiency is given. All measurements have been taken as a guide to prospective buyers only, and are not precise. If you require clarification or further information on any points, please contact us, especially if you are travelling some distance to view.

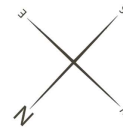
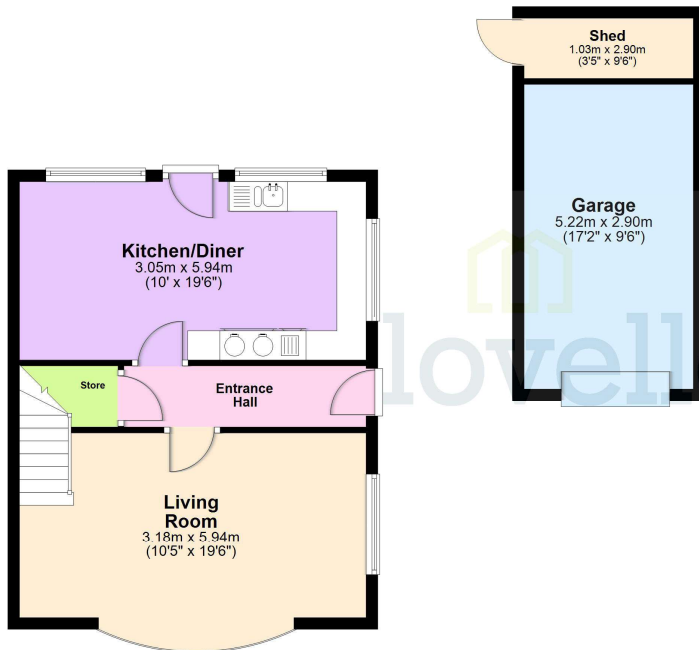
## Mobile and broadband

It is advised that prospective purchasers visit [checker . ofcom . org . uk](http://checker.ofcom.org.uk) in order to review available wifi speeds and mobile connectivity at the property.



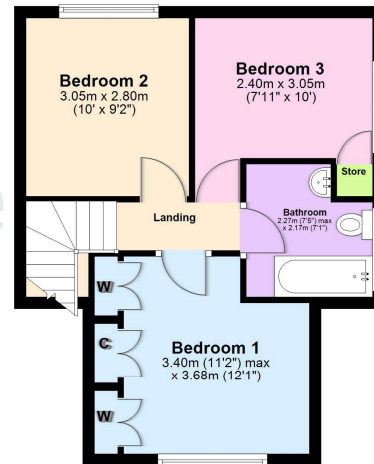
### Ground Floor

Approx. 63.3 sq. metres (681.2 sq. feet)



### First Floor

Approx. 38.3 sq. metres (412.4 sq. feet)



Total area: approx. 101.6 sq. metres (1093.6 sq. feet)

The provided floor plan is intended for general informational purposes only and may not accurately represent the exact dimensions, layout, or features of the property. The floor plan should not be relied upon for making decisions about purchasing, renting, or modifying the property. Actual measurements and features may vary. It is recommended that interested parties conduct a physical inspection of the property to verify the accuracy of the floor plan and obtain specific information about the property's condition, amenities, and any other relevant details.

Plan produced using PlanUp.

When it comes to **property**  
it must be

**lovelle**

01472 251918

grimsby@lovelle.co.uk