



The Pembroke 4 bedroom home

Homes 244, 245 & 255

Finches Park

Kirby Cross, Essex CO13 0LR | 01255 388 657

lindenhomes.co.uk

Linden
HOMES

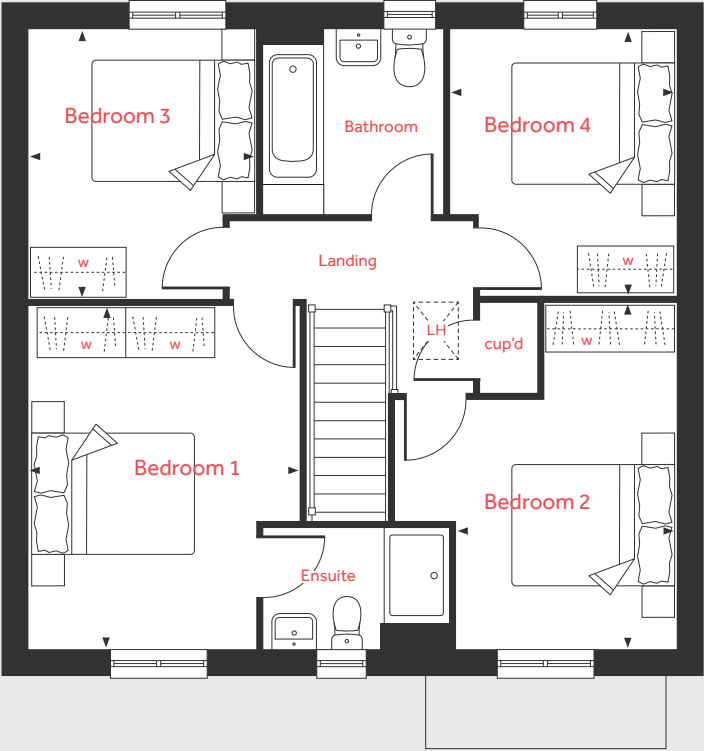
The Pembroke

4 bedroom home

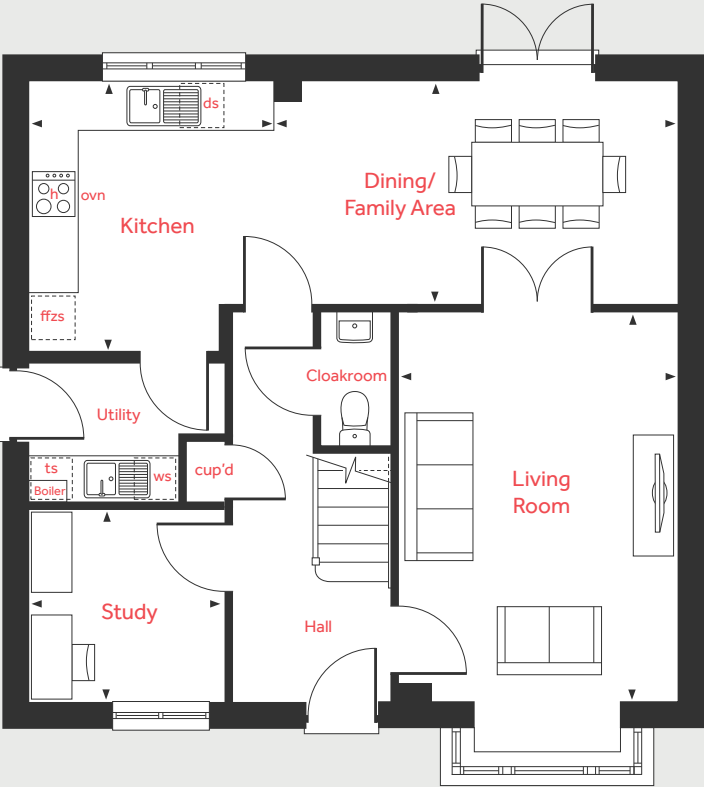
Homes 244*, 245 & 255

*Handed/Mirror image

First Floor



Ground Floor



Ground Floor

Living Room		
4.83m x 3.50m		15'10" x 11'5"
Kitchen/Dining Area		
8.06m x 3.34m		26'5" x 10'10"
Study		
2.41m x 2.37m		7'11" x 7'9"

First Floor

Bedroom 1		
4.29m x 3.40m		14'1" x 11'1"
Bedroom 2		
4.31m x 2.74m		14'2" x 9'0"
Bedroom 3		
3.35m x 2.88m		11'0" x 9'5"
Bedroom 4		
3.32m x 2.82m		10'9" x 9'3"

h	hob	ts	tumble dryer space
ovn	oven	cup'd	cupboard
ds	dishwasher space	w	space for wardrobe
ws	washing machine space	lh	loft hatch
ffzs	fridge freezer space	◀ ▶	measuring points

The Pembroke | Finches Park |

The floorplan has been produced for illustrative purposes only. Room sizes shown are between arrow points as indicated on plan. The dimensions have tolerances of + or -50mm and should not be used other than for general guidance. If specific dimensions are required, enquiries should be made to the sales consultant. The floor plans shown are not to scale. Measurements are based on the original drawings. Slight variations may occur during construction.

The illustrations shown are computer generated impressions of how the property may look and are indicative only. External details or finishes may vary on individual plots and homes may be built in either detached or attached styles depending on the development layout. Exact specifications, window styles and whether a property is left or right handed may differ from plot to plot. Please speak to our sales consultant for specific plot details. All homes feature PV panels; the exact position and number can be confirmed by our Sales Consultant.

Produced by PJP Design Ltd.
When you have finished with this leaflet please recycle it.
September 2025.