



# Stanley Road

East Sheen, SW14

£2,750 per month  
(£634.62 per week)

A stunning example of a two bedroom Victorian cottage in East Sheen's favoured Parkside area. This lovely home offers a smart and contemporary interior yet retains plenty of character associated with this period of house.

The house is accessed through a private front garden and on the ground floor is a through reception with a feature fireplace and bay window, modern family bathroom and to the rear lies an impressive extended kitchen with a pitched roof letting in plenty of light. This leads out to a private garden which offers a lovely light aspect and privacy from surrounding houses.

Upstairs the house provides a master bedroom with a further feature fire place and exposed brickwork and with impressive mezzanine floor. There is also a second double bedroom in this larger than average cottage.

Stanley Road is situated within easy reach of East Sheen and Richmond town centres but is also a short walk to the sizeable Sheen Common and Richmond Park. The Outstanding-rated Sheen Mount Primary School is only metres away.

**CHESTERTONS**



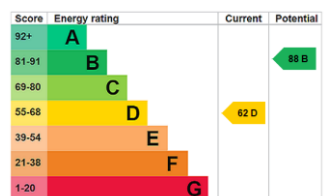
# Stanley Road

East Sheen, SW14

- Two Bedrooms
- Garden
- Mezzanine Floor Space
- Victorian Cottage



**Deposit Required:** £3,173.08  
**Local Authority:** Richmond upon Thames  
**Council Tax Band:** E  
**EPC Rating:** D  
**Unfurnished**

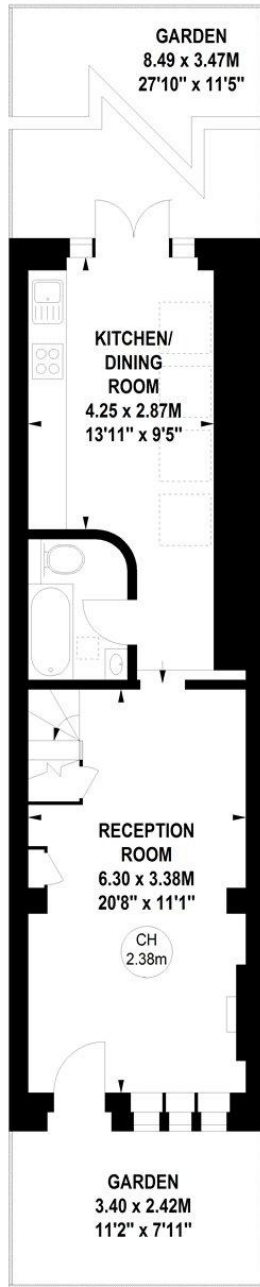


### *Chestertons East Sheen Lettings*

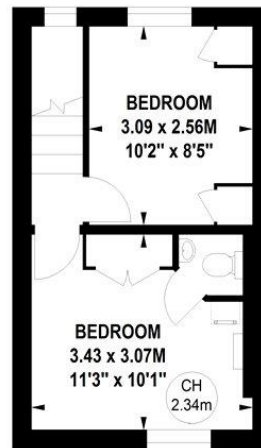
254a Upper Richmond Road West  
East Sheen  
London  
SW14 8AG  
sheenlettingsusers@chestertons.co.uk  
02081040580  
chestertons.co.uk

Additional tenant charges apply (fees apply to non-AST tenancies only)  
Tenancy Agreement Fee: £300  
References per Tenant/Guarantor: £60  
Inventory check (approx. £100 – £250 inc. VAT)  
chestertons.co.uk/property-to-rent/applicable-fees

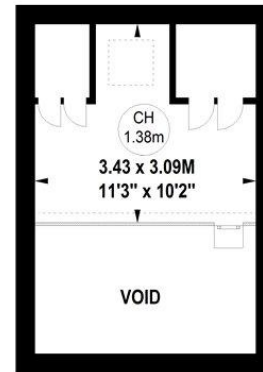
Key :  
CH - Ceiling Height



**Ground Floor**



**First Floor**

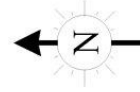


**Mezzanine**

## Stanley Road, SW14

Approximate gross internal area

73.39 sq m / 790 sq ft



The floor plan is not to scale and measurements and areas shown are approximate and therefore should be used for illustrative purposes only. The plan has been prepared in accordance with the RICS code of Measuring Practice and whilst we have confidence in the information produced, it must not be relied on.

If there is any aspect of particular importance, you should carry out or commission your own inspection of the property.

Copyright of FeaturePRO.

