



Upper Tooting Road, SW17

£2,900 Per calendar month

A large three double bedroom flat located in a purpose built building in Tooting Bec. The property has a spacious living room and separate kitchen. Located on the second floor it also benefits from plenty of natural light. Ideal for professional sharers.

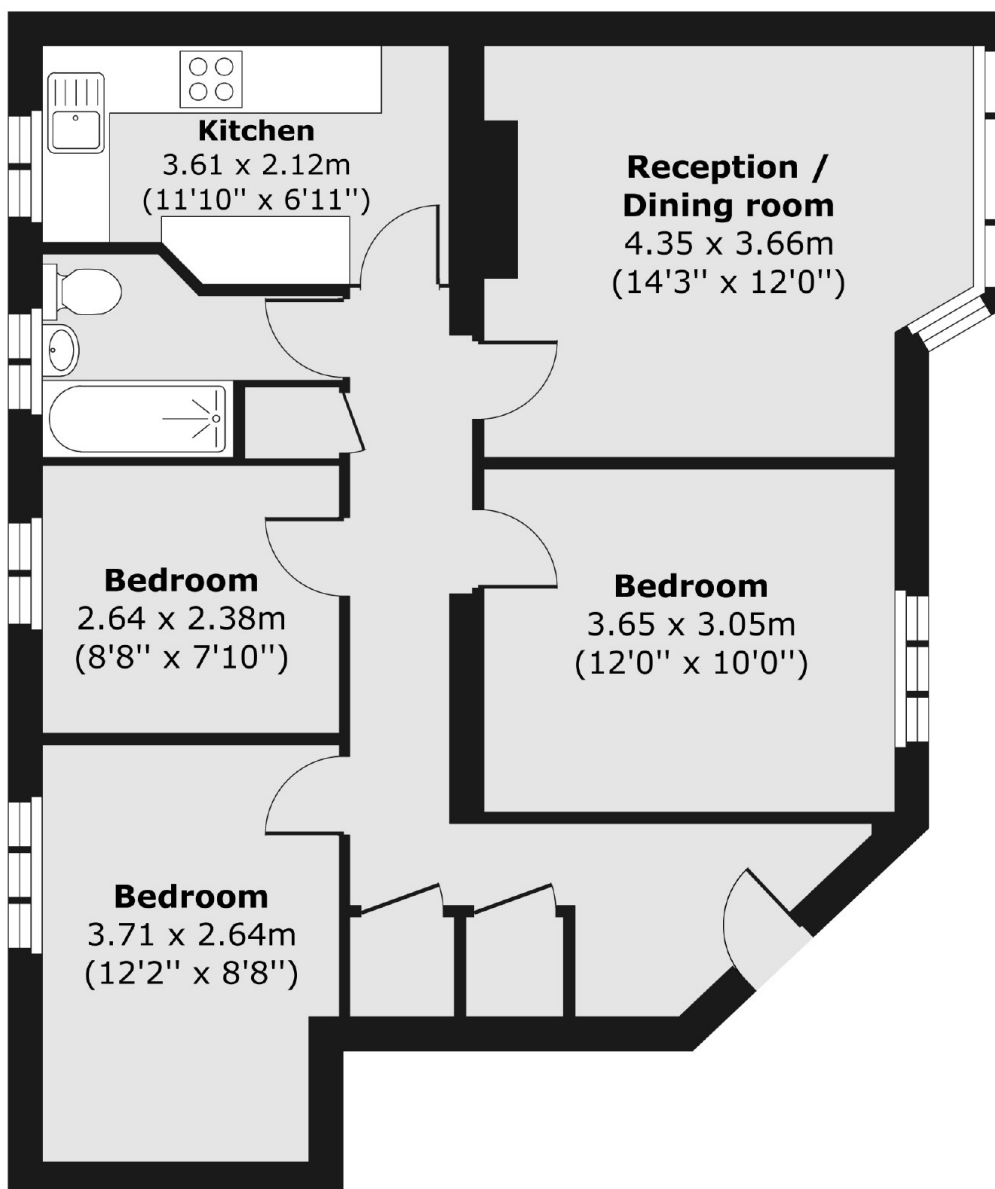
Holmbury Court is located off Upper Tooting Road, close to Tooting Bec Station. There are plenty of bars and restaurant close by including the Kings Head pub a short walk away.

Features

- Three Double Bedrooms
- Separate Kitchen
- Reception Room
- Second Floor
- Neutral Decor
- Tooting Bec

Upper Tooting Road, London, SW17

First Floor



Total area (approx.) 68.27 sq. m (735 sq. ft)