



## Marsala Road, SE13

£625,000

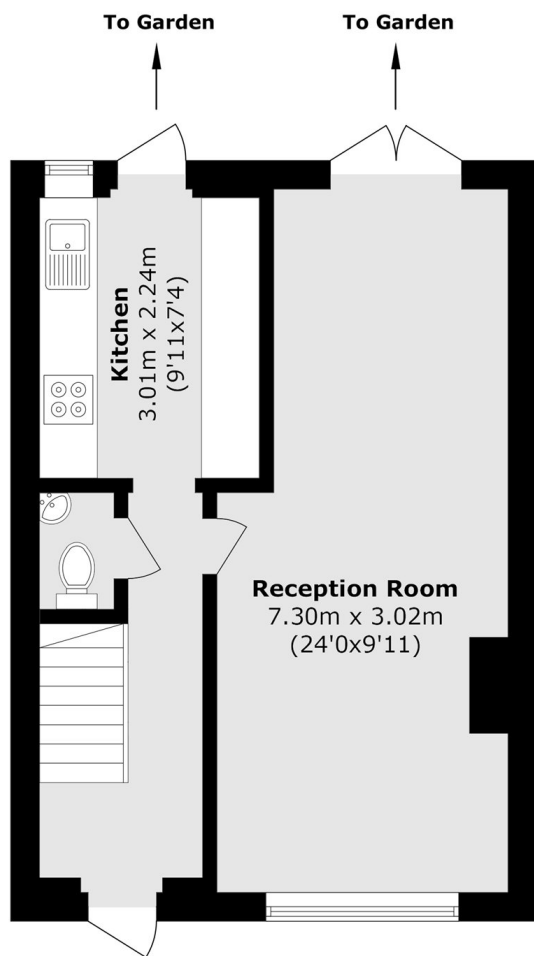
Set behind a mature hedge this immaculately presented three bedroom end of terrace house is well positioned for Lewisham and Ladywell Village. Comprising of a double reception room, separate kitchen, family bathroom and a private low maintenance rear garden.

Marsala Road is a residential street well positioned for Lewisham and Ladywell town centre. Ladywell Fields and Hilly Fields Park are both nearby, as are the transport links at Lewisham and Ladywell mainline train stations.

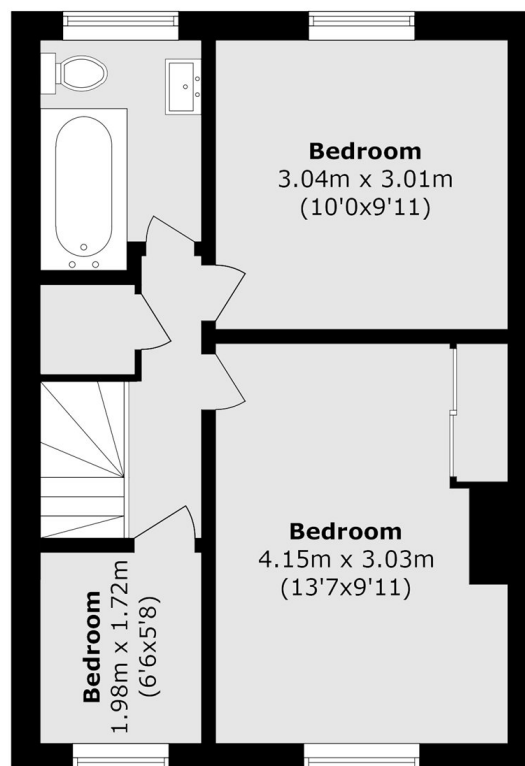
### Features

- Three Bedrooms
- Double Reception Room
- Well Presented Kitchen
- Family Bathroom
- Private Garden
- Chain Free

# Marsala Road, London, SE13



**Ground Floor**



**First Floor**

Total area (approx.): 70.8 sq. m (762.0 sq. ft)