



BERMONDSEY STREET

London SE1



A CHARACTERFUL PERIOD HOUSE.

Set behind its original shopfront on Bermondsey Street, this Grade II listed Georgian freehold house dates back over 200 years and enjoys uninterrupted views across the wide green expanse of Tanner Street Park.



2



2



1

EPC

D

Local Authority: London Borough of Southwark

Council Tax band: E

Tenure: Freehold

Guide Price: £1,500,000



Tucked within the Bermondsey Street Conservation Area and directly overlooking the green open expanse of Tanner Street Park, the house unfolds gracefully across three floors, offering approx. 1164 sq ft of thoughtfully designed living.

The ground floor welcomes you with a charming reception room that leads through to a generous dining area and a contemporary kitchen, all flowing seamlessly to a peaceful inner courtyard—a wonderfully private spot for morning coffee or warm summer evenings.





The original historic shopfront remains intact, adding a distinctive nod to the building's past. Upstairs, the first floor hosts a beautifully proportioned bedroom and glass door opening onto a west-facing terrace, perfect for catching the afternoon light.

The top floor features a further large double bedroom with an en-suite, both bathrooms designed to reflect the owner's refined, architectural eye. Original features have been sensitively restored, and the entire house enjoys soft, natural light throughout, giving every room a calm and inviting atmosphere.

Despite its scale, there's a real intimacy here—a home that feels loved, lived-in, and easy. Offered for the first time in almost 30 years, this rare freehold Georgian house is a unique opportunity to own one of the few remaining period homes on one of London's most vibrant and character-rich streets, and particularly rare for its open park setting.



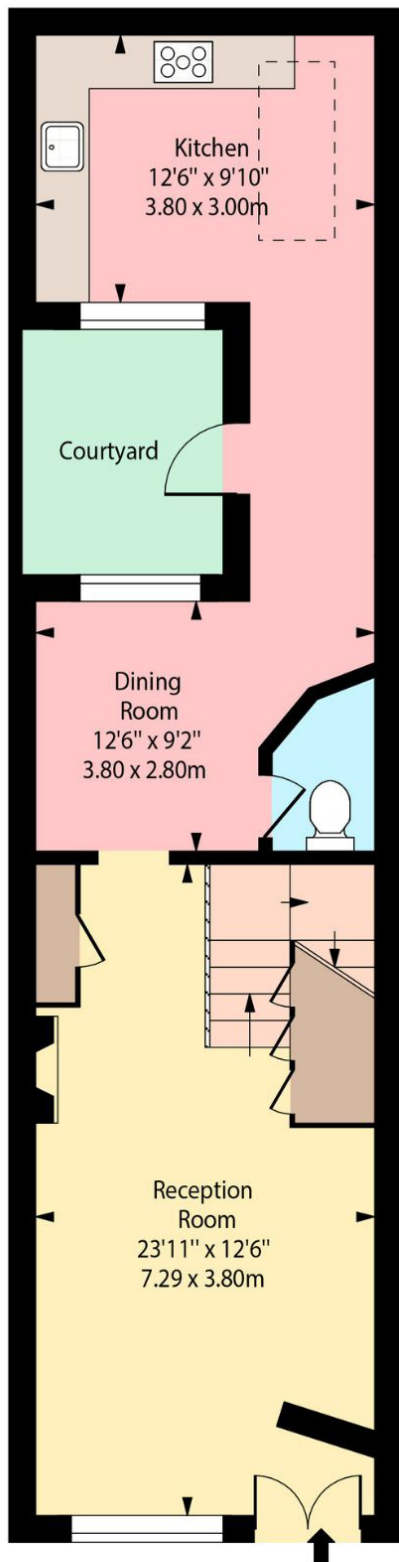


LOCATION

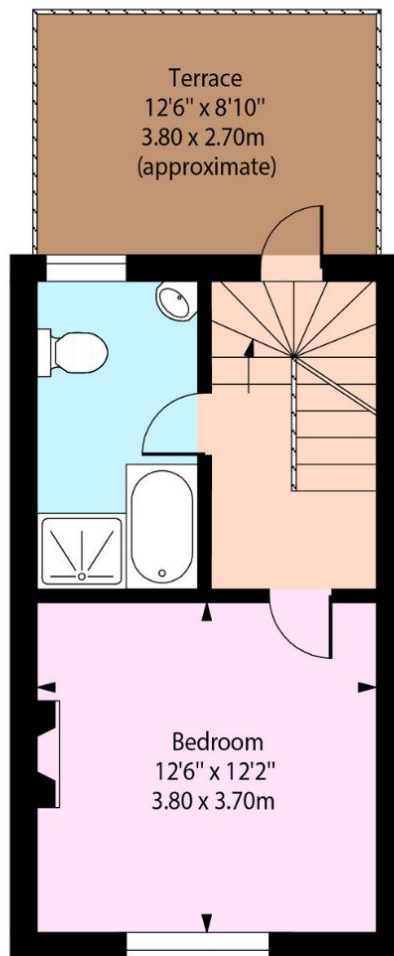
Outside your front door lies the very best of Bermondsey Street – one of London’s most sought-after and characterful neighbourhoods, known for its vibrant mix of galleries, independent boutiques, artisan cafés and an ever-evolving food scene. Renowned spots such as José, Pizarro, Café Murano, Casse-Croûte and Baccala are all just moments away, while Borough Market and Maltby Street Market offer some of the capital’s finest fresh produce within easy reach. The area blends culture and community effortlessly, with the impressive White Cube gallery just around the corner and the tennis courts of Tanner Street Park a short stroll away. Bermondsey Street continues to cement its reputation as a prime residential destination, offering both energy and charm, all within walking distance of the South Bank and the City. Transport connections are exceptional, with London Bridge station nearby providing access to the Jubilee and Northern lines, extensive national rail services, and direct Thameslink routes to St Pancras International for Eurostar services to Paris, Brussels and beyond. There are also excellent links to major airports, including direct trains to Gatwick Airport and easy access to London City Airport, alongside additional Underground and bus connections from nearby Borough station.



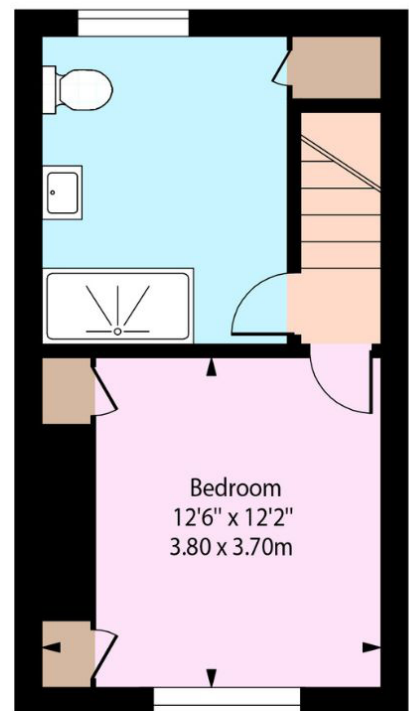




Ground Floor



First Floor



Second Floor

Approximate Gross Internal Area = 108.14 sq m / 1164 sq ft

This plan is for layout guidance only. Not drawn to scale unless stated. Windows and door openings are approximate. Whilst every care is taken in the preparation of this plan, please check all dimensions, shapes and compass bearings before making any decisions reliant upon them. (ID767266)



We would be delighted
to tell you more.

Mark Lee
+44 203 597 7687
mark.lee@knightfrank.com

Knight Frank <OfficeName>
30 Churchill Place
London E14 5RE

[knightfrank.co.uk](https://www.knightfrank.co.uk)

Your partners in property

1. Particulars: These particulars are not an offer or contract, nor part of one. You should not rely on statements given by Knight Frank in the particulars, by word of mouth or in writing ("information") as being factually accurate about the property, its condition or its value. Neither Knight Frank nor any joint agent has any authority to make any representations about the property, and accordingly any information given is entirely without responsibility on the part of Knight Frank. 2. Material Information: Please note that the material information is provided to Knight Frank by third parties and is provided here as a guide only. While Knight Frank has taken steps to verify this information, we advise you to confirm the details of any such material information prior to any offer being submitted. If we are informed of changes to this information by the seller or another third party, we will use reasonable endeavours to update this as soon as practical. 3. Photos, Videos etc: The photographs, property videos and virtual viewings etc. show only certain parts of the property as they appeared at the time they were taken. Areas, measurements and distances given are approximate only. 4. Regulations etc: Any reference to alterations to, or use of, any part of the property does not mean that any necessary planning, building regulations or other consent has been obtained. A buyer must find out by inspection or in other ways that these matters have been properly dealt with and that all information is correct. 5. Fixtures and fittings: A list of the fitted carpets, curtains, light fittings and other items fixed to the property which are included in the sale (or may be available by separate negotiation) will be provided by the Seller's Solicitors. 6. VAT: The VAT position relating to the property may change without notice. 7. To find out how we process Personal Data, please refer to our Group Privacy Statement and other notices at <https://www.knightfrank.com/legals/privacy-statement>.

Particulars dated June 2026. Photographs and videos dated June 2026. All information is correct at the time of going to print. Knight Frank is the trading name of Knight Frank LLP. Knight Frank LLP is a limited liability partnership registered in England and Wales with registered number OC305934. Our registered office is at 55 Baker Street, London W1U 8AN. We use the term 'partner' to refer to a member of Knight Frank LLP, or an employee or consultant. A list of members names of Knight Frank LLP may be inspected at our registered office. If you do not want us to contact you further about our services then please contact us by either calling 020 3544 0692, email to marketing.help@knightfrank.com or post to our UK Residential Marketing Manager at our registered office (above) providing your name and address.