



6 Ottoman Terrace

Watford, WD17 2RH

Offers Over £300,000

For proceedable buyers only! This property presents a good opportunity for those looking to create their ideal home, as it is in need of modernisation. With two spacious reception rooms, there is ample space for both relaxation and entertaining. The two bedrooms offer comfortable living quarters, while the bathroom provides essential amenities.

One of the standout features of this property is its prime location. Situated close to Watford Junction Train Station, commuting to London and other areas is both convenient and efficient. Additionally, the vibrant Watford Town Centre is just a short distance away, offering a variety of shops, restaurants, and leisure facilities.

This house is perfect for first-time buyers or investors looking to add value through renovation. The viewing open day is scheduled for Saturday, 16th May 2026, providing an excellent opportunity to explore the potential this property holds. Don't miss your chance to transform this house into a beautiful home in a sought-after area.

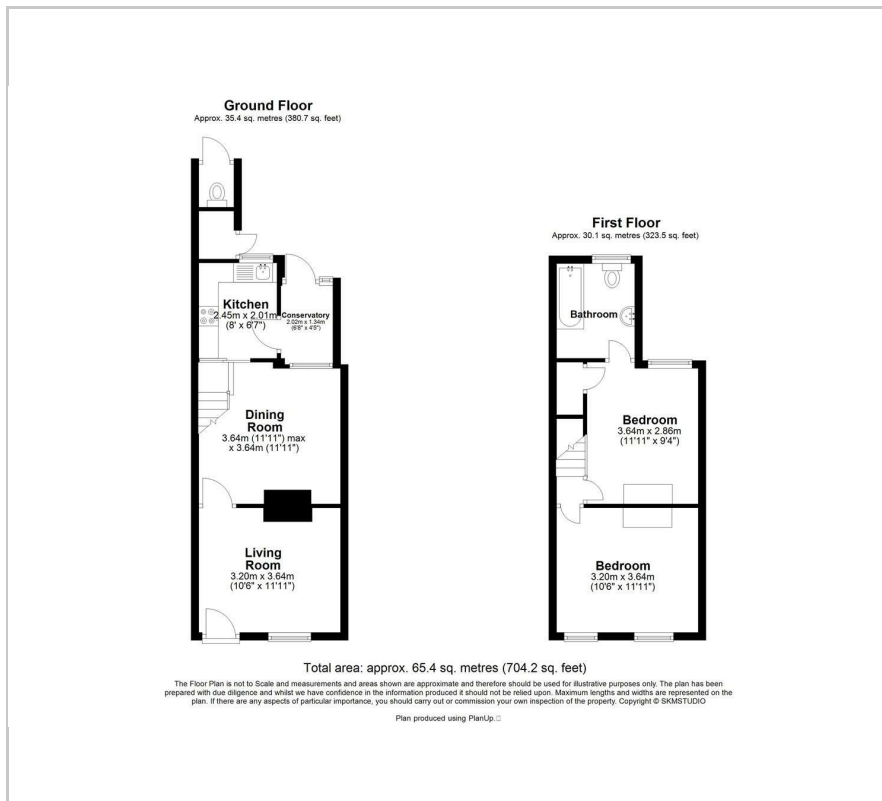
Viewing

Please contact our Abbots Langley Office on 01923262666 if you wish to arrange a viewing appointment for this property or require further information.

- Sale By Tender Ends Monday 18th May 2026
- Proceedable Buyers Only!
- Two Bedroom Terrace House
- In Need Of Modernisation
- Close To Watford Junction
- Close To Town Centre
- VIEWING OPEN DAY SATURDAY 16TH MAY
- ALL VIEWINGS BY APPOINTMENT ONLY!
- NO UPPER CHAIN!



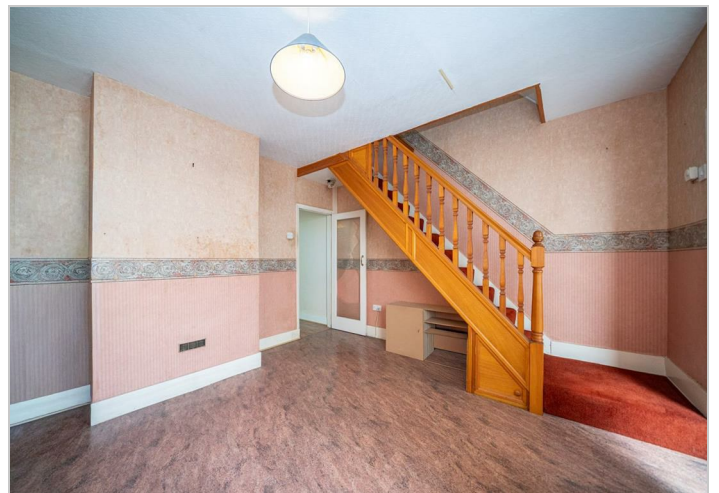
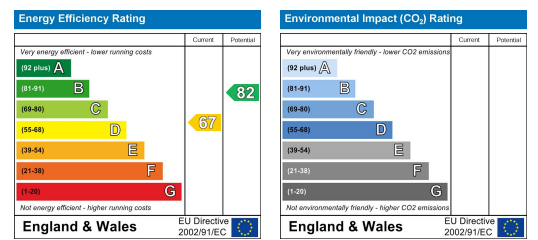
Floor Plan



Area Map



Energy Efficiency Graph



These particulars, whilst believed to be accurate are set out as a general outline only for guidance and do not constitute any part of an offer or contract. Intending purchasers should not rely on them as statements of representation of fact, but must satisfy themselves by inspection or otherwise as to their accuracy. No person in this firm's employment has the authority to make or give any representation or warranty in respect of the property.