



Turner Street
Abington, Northampton

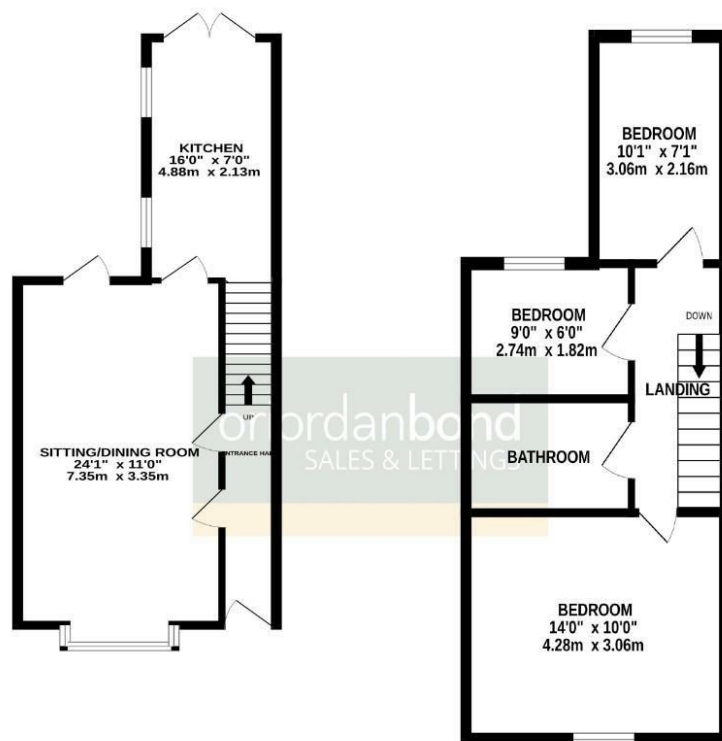
oriordanbond
SALES & LETTINGS



GROUND FLOOR



1ST FLOOR



TOTAL FLOOR AREA : 802 sq. ft. (74.5 sq. m.) approx.

Whilst every attempt has been made to ensure the accuracy of the floorplan contained here, measurements of doors, windows, rooms and any other items are approximate and no responsibility is taken for any error, omission or misstatement. This plan is for illustrative purposes only and should be used as such by any prospective purchaser. The services, systems and appliances shown have not been tested and no guarantee as to their operability or efficiency can be given.
Made with Metropix 2020.

Turner Street

Abington

NN1 4JJ

OFFERS OVER £220,000

O'Riordan Bond is pleased to offer with no onward chain this three bedroom Victorian terraced home, located in one of Abington's most popular roads, within walking distance of Abington Park and The Racecourse.

The accommodation comprises entrance hall, through sitting/dining room with feature fireplaces and door to the rear garden and an extended kitchen/breakfast room. The first floor offers two double bedrooms, a single bedroom and a family bathroom with shower over the bath. Outside is an enclosed rear garden with lawn and decked patio area. Further benefits include gas radiator heating and uPVC double glazing. (B/802/M)

Additional information

- Council Tax Band: B
- Energy Efficiency Rating: D

Viewing

Viewing strictly by appointment – details below

Disclaimer

O'Riordan Bond Estate Agents Limited has not tested apparatus, equipment, fittings or services and so cannot verify they are in working order. The buyer is advised to obtain verification from their solicitor or surveyor.

O'Riordan Bond Abington Sales

01604 639007

abington@oriordanbond.co.uk

