



**9 WHITLEY LANE**

STANTON HARCOURT OX29 5BS





# 9 WHITLEY LANE

STANTON HARCOURT OX29 5BS



Nicely positioned on the edge of this desirable village, this beautifully presented home was built by Hayfield Homes and enjoys a west facing rear garden with a garage and private driveway parking. The spacious accommodation includes a superb open plan kitchen/dining room that is fitted with a wide range of modern units, integrated appliances and enjoying ample room for family dining. Filled with light, the sitting room is a lovely space for the family to relax and enjoy the view across the garden through stylish French doors. A WC and good size storage cupboard completed the wonderful ground floor picture.

Landscaped with lawn and planted border, the private garden enjoys a high degree of privacy and the seating area creates a superb spot for some alfresco dining. Additional benefits include a garage with driveway space, and an NHBC warranty until 2030. This delightful development is retained to a high standard throughout the year for a fee of £190 every 6 months.

**£410,000**  
GUIDE PRICE



2



1



2



**Private with patio**









**Every office** has access to **every buyer** registered across our network of seven offices.

Sharing a single database of buyers ensures maximum exposure for our clients.

## Witney Sales

10 Market Square  
Witney Oxfordshire  
OX28 6BB

t: 01993 776 775

e: [witney@breckon.co.uk](mailto:witney@breckon.co.uk)

### Whitley Lane, Witney, OX29 5RJ, GB

Main House = 70.97 sq m / 764 sq ft  
Garage = 14.12 sq m / 152 sq ft  
Total = 85.09 sq m / 916 sq ft

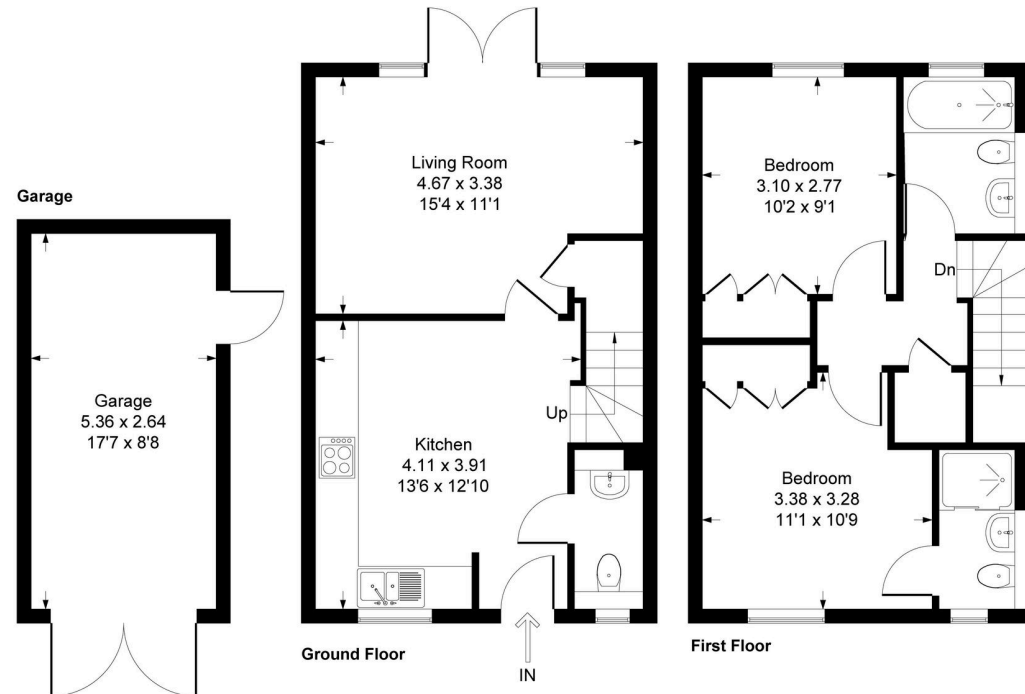
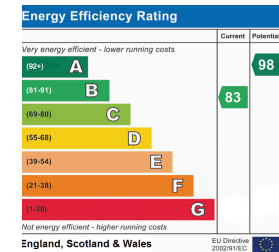


Illustration for identification purpose only, measurements approximate, and not to scale.



### Council Tax Band

Band C  
£2132.74

### Local Authority

Local Authority  
West Oxfordshire District Council

#### Summertown

t: 01865 310 300 (sales)  
t: 01865 20 1111 (letting)  
e: [summertown@breckon.co.uk](mailto:summertown@breckon.co.uk)

#### Oxford City Centre

t: 01865 244 735 (sales)  
t: 01865 20 1111 (letting)  
e: [post@breckon.co.uk](mailto:post@breckon.co.uk)

#### Woodstock

t: 01993 811 881 (sales)  
t: 01993 810 100 (letting)  
e: [woodstock@breckon.co.uk](mailto:woodstock@breckon.co.uk)

#### Bicester

t: 01869 24 24 23 (sales & letting)  
e: [bicester@breckon.co.uk](mailto:bicester@breckon.co.uk)

#### Headington

t: 01865 750 200 (sales)  
t: 01865 763 999 (letting)  
e: [headington@breckon.co.uk](mailto:headington@breckon.co.uk)

#### Abingdon-on-Thames

t: 01235 550 550 (sales)  
t: 01235 554 040 (letting)  
e: [abingdon@breckon.co.uk](mailto:abingdon@breckon.co.uk)

#### New Homes

t: 01865 261 222  
e: [newhomes@breckon.co.uk](mailto:newhomes@breckon.co.uk)

#### Land Team

t: 01865 558 999  
e: [land@breckon.co.uk](mailto:land@breckon.co.uk)

#### Letting and Property Management

t: 01865 20 1111  
e: [lettings@breckon.co.uk](mailto:lettings@breckon.co.uk)

#### Creative Department

t: 01865 310 300  
e: [creative@breckon.co.uk](mailto:creative@breckon.co.uk)

IMPORTANT NOTICE: These particulars are for information purposes only and do not in whole or in part constitute or form part of any offer or contract, nor should any statement domestic appliances are in working order. We therefore recommend that the purchaser obtains verification from their services corner with property, heating systems at ensure the accuracy of the floor plans contained here. Measurements of doors, windows and rooms are approximate and no responsibility is taken for any error, omission or mis-statement. These plans are for representation purposes only as defined by the RICS code of measuring practice and should be used as such by any possible purchaser.