



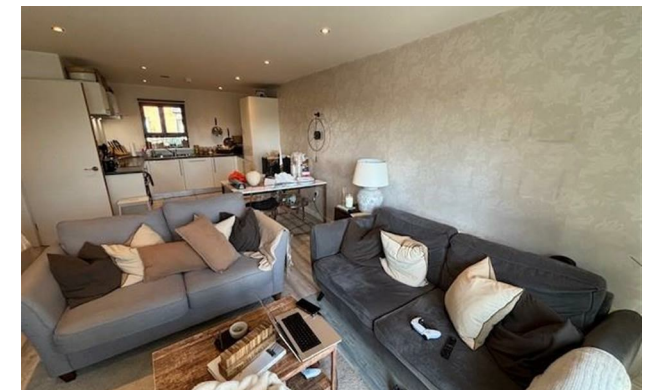
Jordan fishwick

874 Wilmslow Road, M20 5AB
Guide Price £1,300 Per Calendar Month



Wilmslow Road East Didsbury M20 5AB

£1,300 Per Calendar Month



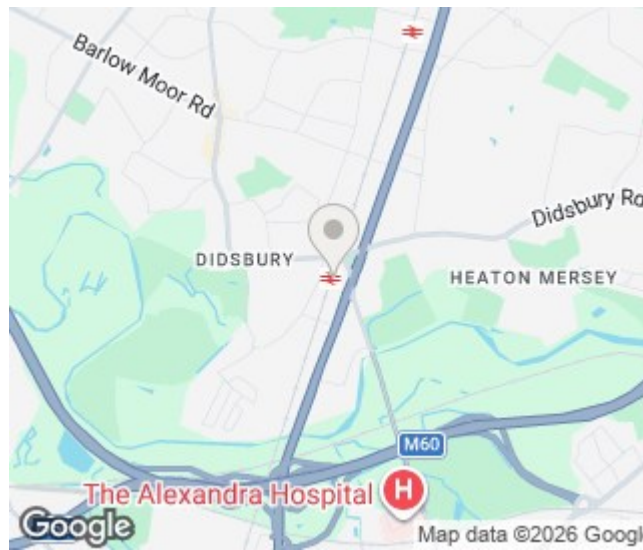
The Property


*** AVAILABLE JUNE *** Jordan Fishwick are delighted to bring to the rental market this stunning two double bedroom, two-bathroom ground floor apartment in the ever-popular development of Citi Peak. The apartment is close to Train Station, Metro Link, local shops and amenities, Parrswood Entertainment Complex and only a short walk from both Didsbury Village and West Didsbury, makes it perfectly suited to couples or professional sharers. In brief, the property comprises; private entrance to apartment, storage cupboard housing washing machine, open plan lounge/dining/kitchen with built in cooker/hob, fridge/freezer, dishwasher and uPVC door leading out onto outside space. Two double bedrooms, master benefitting from en-suite and a main bathroom with white three-piece suite. The property also benefits from double glazing and electric heating. Parking available by prior negotiation but may not be on site. Offered on a furnished basis. Please contact our Didsbury office to view.

View our Virtual Tour Here - <https://youtu.be/mXNnIfy-zNg>

EPC Rating D // Council Tax Band C

- Available June
- Two Bedrooms
- Two Bathrooms
- Furnished
- Ideally Suited for a Couple or Sharers
- Great Location of East Didsbury
- Walking Distance to all Local Amenities
- Parking by Negotiation Only
- Council Tax Band C
- EPC Rating D



Energy Efficiency Rating		
	Current	Potential
Very energy efficient - lower running costs		
(92 plus) A		
(81-91) B		
(69-80) C		80
(55-68) D	59	
(39-54) E		
(21-38) F		
(1-20) G		
Not energy efficient - higher running costs		
England & Wales	EU Directive 2002/91/EC 	





These particulars are believed to be accurate but they are not guaranteed and do not form a contract. Neither Jordan Fishwick nor the vendor or lessor accept any responsibility in respect of these particulars, which are not intended to be statements or representations of fact and any intending purchaser or lessee must satisfy himself by inspection or otherwise as to the correctness of each of the statements contained in these particulars. Any floorplans on this brochure are for illustrative purposes only and are not necessarily to scale.

Offices at: Chorlton, Didsbury, Disley, Hale, Glossop, Macclesfield, Manchester Deansgate, Manchester Whitworth Street, New Mills, Sale, Wilmslow and Withington