



Queensmill Road, SW6

£1,150,000

A meticulously renovated four-bedroom home situated in the heart of the highly sought-after Alphabet Streets neighbourhood.

Queensmill Road is moments from the prestigious Bishops Park, the Thames Path, and the Nuffield Health Club. Nearby are top dining spots like the Michelin-starred River Café, The Crabtree gastropub, and Fulham Reach. Excellent transport links on Fulham Palace Road provide easy access to Fulham, Hammersmith and Putney.

Features

- Four Double Bedrooms
- Share Of Freehold
- Private Rear Garden
- Chain Free
- Ample Storage
- Fully Integrated Kitchen



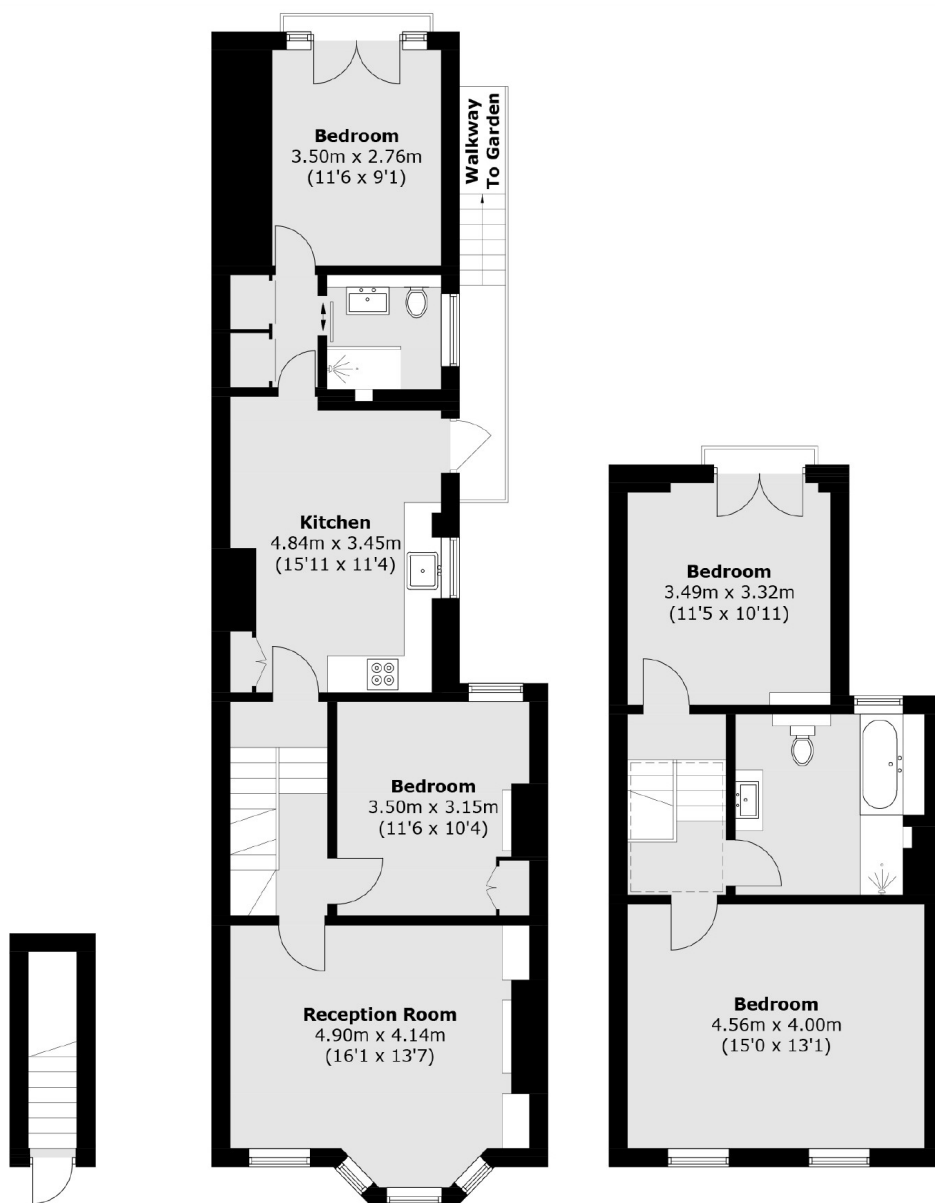
Queensmill Road, SW6

Occupying the top two floors and spanning just under 1,400 sq ft, this beautifully refurbished four-bedroom flat offers generous living space and timeless character in one of West London's most desirable residential pockets. The property comprises four well-proportioned double bedrooms and two bathrooms, one of which boasts a luxurious waterfall shower and a sleek porcelain bathtub designed for both style and comfort.

A spacious kitchen-diner opens directly onto a private, south-facing garden perfect for entertaining or relaxing in the sun. The bright and airy reception room is a standout feature, showcasing high ceilings, a striking bay window, and elegant original period details, seamlessly blending classic charm with contemporary style.



Queensmill Road, London, SW6



Ground Floor

First Floor

Second Floor

Total area (approx.): 124.1 sq. m (1,335.7 sq. ft)