



Torkington Road | Hazel Grove | SK7 6NR

EDWARD
mellor



Features

- Stunning 4 Bedroom Family Home
- 3 Bathrooms Inc 2 En Suite
- 2 Spacious Reception Rooms
- Extended Open Plan Living Kitchen
- Delightful Lawned Gardens

Welcome to Torkington Road in this highly regarded residential area of Hazel; Grove. This substantial and hugely impressive 4 double bedroom, 3 bathroom bay fronted family home offers expansive accommodation over 3 floors and is ideally suited to a growing family looking for a long term family home. The property features a

plethora of period charm and character conducive with its age whilst being thoughtfully modernised and extended to provide a stylish, "ready to move into", interior. The spacious ground floor living space is complimented by 4 double bedrooms spanning over 2 upper floors and including a stunning loft conversion with concealed en suite

shower room together with an en suite shower room to the master bedroom on the first floor. The property stands on a 0.12 acre freehold plot with delightful lawned gardens and an abundance of off road parking for multiple family vehicles. Viewing essential.



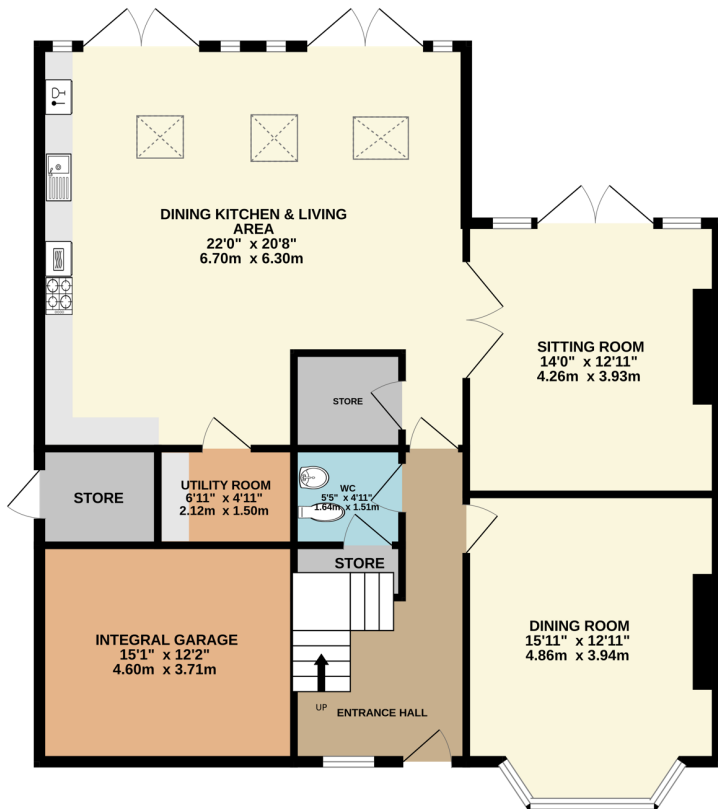
Torkington Road is situated in the heart of Hazel Grove and is within close proximity of excellent schools, local shopping facilities and good public transport links. The accommodation on offer briefly comprises : Welcoming entrance hall with stairs leading to the first floor, useful downstairs WC with built in cloaks area, impressive front living room / dining room with feature central fireplace, separate sitting room / lounge with French doors leading to the rear garden, large open plan living kitchen with log burning fire and 2 sets of French doors leading to a raised decking area whilst a useful utility area completes the ground floor living space. To the first floor, a landing with winding stairs to the second floor also leads to 3 double bedrooms with en suite to the master bedroom and a 3 piece family bathroom suite. To the second floor is a stunning loft bedroom with velux windows and a concealed en suite shower room.



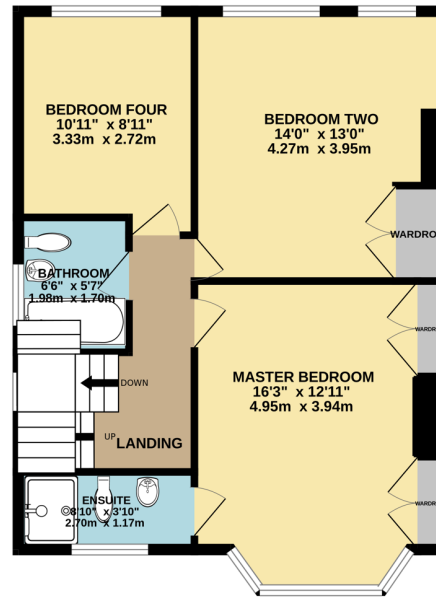
FLOOR LAYOUT

Not to Scale - For Identification Purposes Only

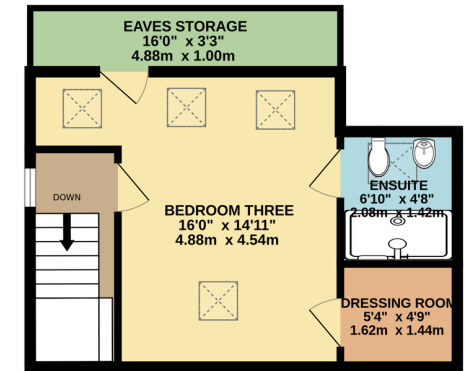
GROUND FLOOR



1ST FLOOR



2ND FLOOR



Whilst every attempt has been made to ensure the accuracy of the floorplan contained here, measurements of doors, windows, rooms and any other items are approximate and no responsibility is taken for any error, omission or mis-statement. This plan is for illustrative purposes only and should be used as such by any prospective purchaser. The services, systems and appliances shown have not been tested and no guarantee as to their operability or efficiency can be given.
Made with Metropix ©2026

Important Information

- Council Tax Band: D
- Tenure:Freehold

EPC Rating

182, London Road, SK7 4DQ
T: 0161 456 6000
E: hazelgrove@edwardmellor.co.uk

The agent has not tested apparatus, equipment, fittings or services and so cannot verify they are in working order or fit for their purpose. The buyer is advised to obtain verification from their Solicitor or Surveyor. Photographs are reproduced for general information and it must not be inferred that any item is included for sale with the property. Please note that all measurements are approximate. These particulars are issued on the understanding that any negotiations in regard to this property are carried out through Edward Mellor Ltd. This property is offered subject to not being sold or withdrawn on receipt of reply. These particulars are believed to be correct but do not form a contract for sale. None of the statements contained in these particulars as to this property are to be relied on as statements or representations of fact. The vendor does not make or give, and neither Edward Mellor Ltd. nor any person in their employment has any authority to make or give, any representation or warranty in relation to this property.