

**Head Office:**  
Dixon Kelley Estate Agents  
1 Penn Court  
Station Road, West Moors  
Dorset. BH22 0JJ

**Telephone: 01202 877511**

# DORSET PARK HOMES

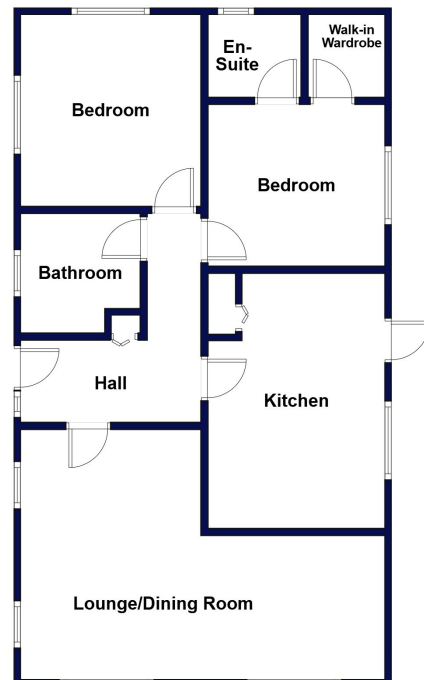
**DRAFT**

[www.dorsetparkhomes.com](http://www.dorsetparkhomes.com)

**57 Oaklands Park, Crossways, Nr Dorchester, Dorset. DT2 8JQ**



**Well Presented Park Home with Delightful Garden**



This drawing has been prepared for diagrammatic purpose only. Not to scale.

## 2-Bedroom Park Home - approx 36' x 20'

Accommodation & approximate room dimensions:

- Tingdene 'Haydon' Park Home circa 1993
- Spacious Entrance Hall: Cloaks. Hatch to roof space.
- Lounge/Dining Room: approx 19'5" x 13'7" max. Feature fireplace. 2 Bay windows.
- Kitchen: approx 13'8" x 9'6". Range of modern floor & wall cupboards. Cupboard housing combination gas boiler. Built-in oven, hob & cooker hood. Integrated dishwasher & freezer. Space for fridge & washing machine. Door to side path.
- Bedroom 1: approx 9'6" x 8'8". Walk-in wardrobe.
- En-Suite Shower Room: Shower cubicle, vanity wash basin & WC.
- Bedroom 2: approx 10'3" x 9'6". Bay window.
- Bathroom: Panelled bath, wash basin & WC.
- Gas Central Heating System (untested)
- PVCu Double-Glazing
- Delightful Garden with patio & lawn, enjoying a sunny aspect. Metal shed with electric supply.
- Parking on Plot
- Age Restriction 50+ Pets considered.
- Popular, well maintained Residential Park near to local amenities.

**Price: £135,000**

**VIEWING STRICTLY BY APPOINTMENT WITH THE VENDOR'S AGENT Dorset Park Homes 01202 877511**

**IMPORTANT NOTE:** These particulars are believed to be correct but their accuracy is not guaranteed. They do not form part of any contract. Nothing in these particulars shall be deemed to be a statement that the property is in good structural condition or otherwise, nor that any of the services, appliances, equipment or facilities are in good working order or have been tested. Purchasers should satisfy themselves on such matters prior to purchase Ref.W05224

## 'Pet Friendly' Park



**Pitch Fee: approx £210.55 per month including water**

**Subject to Annual Review**

**Council Tax Band: 'B'**

**Tenure: 1983 Mobile Homes Act Agreement**

*The recommended specialist in Park Home sales*  
Proprietor: Simon Dixon

