



Wessex Close, KT1

£400,000

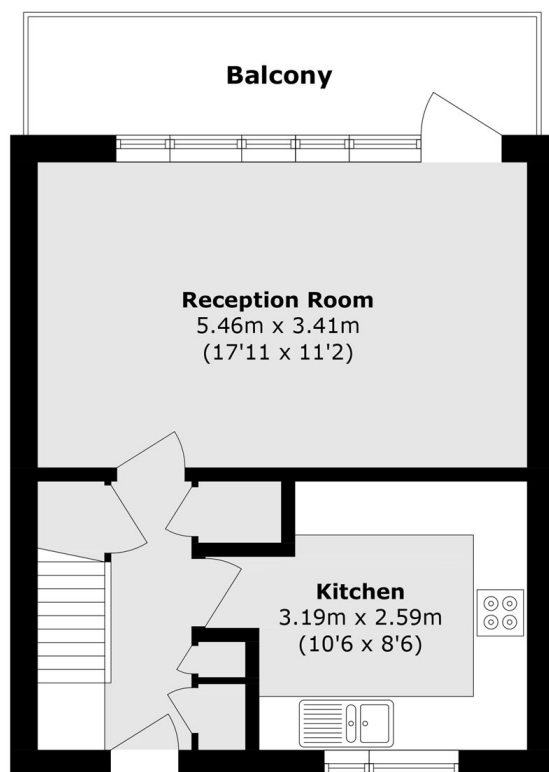
Ideally positioned close to Norbiton Station, this impressive three bedroom duplex apartment offers bright, spacious and well designed accommodation arranged over two levels. The property features a generous reception area filled with natural light, a separate fully fitted kitchen and access to a private balcony. The apartment further benefits from three well proportioned bedrooms and a modern bathroom.

Wessex Close is conveniently located within easy reach of Norbiton Station, Kingston Hospital and the vast open green spaces of Richmond Park. Kingston town centre is just a short distance away, offering a wide selection of shops, restaurants, cafés and leisure facilities, making this an excellent location for both convenience and lifestyle.

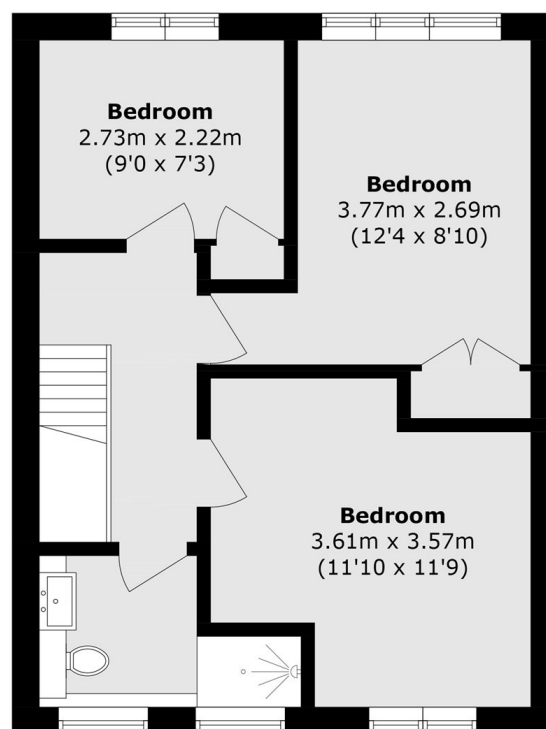
Features

- First Floor Flat
- Split Level
- Three Bedrooms
- Recently Refurbished
- Low Service Charges
- Parking

Wessex Close, Kingston Upon Thames, KT1



Second Floor



Third Floor

Total area (approx.): 76.5 sq. m (823.4 sq. ft)
Balcony area (approx.): 7.4 sq. m (79.6 sq. ft)