

WILKINSON

SALES • LETTINGS • MANAGEMENT

£275,000

Courtney Close, Stonehills, Tewkesbury, GL20

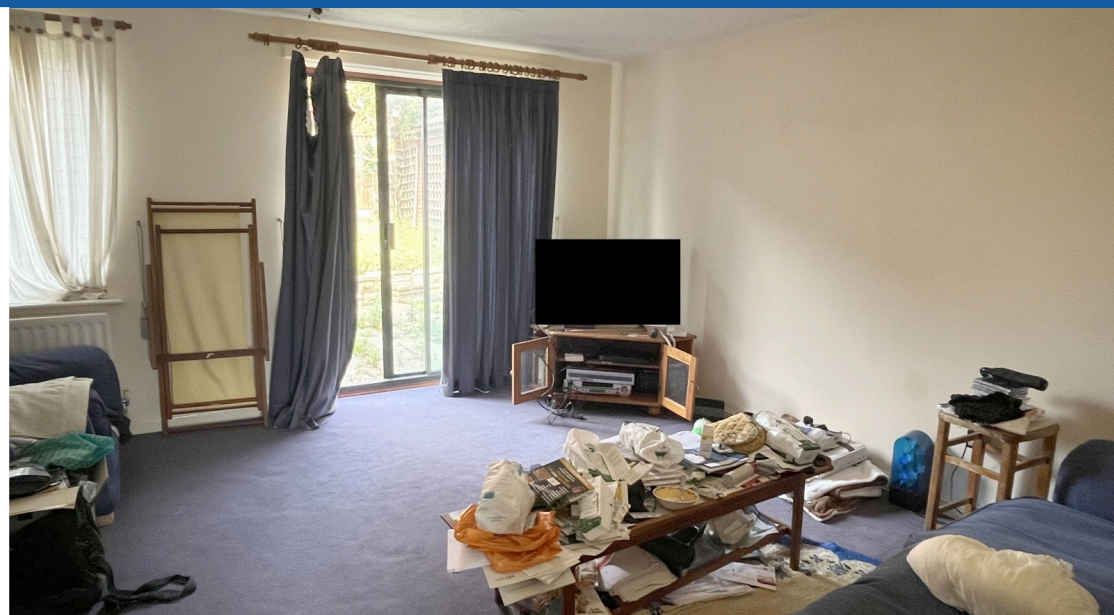


 **3**
Bedrooms

 **1**
Bathroom

101 High Street, Tewkesbury, Gloucestershire, GL20 5JZ |
Info@wilkinsonslm.co.uk

01684 367736



- Semi Detached Home
- Kitchen
- Lounge/Dining Room
- Downstairs WC
- Three Bedrooms
- Family Bathroom
- Double Glazing
- Gas Central Heating
- Rear Garden
- Garage

Wilkinson SLM are offering for sale a semi detached home located towards the end of a close on the popular Stonehills development.

From the hallway there is a downstairs WC to the left and a door to the right leading to the kitchen with built in electric oven and gas hob. A further door from the hallway opens to the lounge/dining room with an understairs storage cupboard and sliding patio doors leading to the low maintenance rear garden.

On the first floor are three bedrooms and a family bathroom with bedroom one having the added benefit of a built in wardrobe.

This home is further complemented by double glazing, gas central heating and a garage.

Kitchen 9' 8" x 7' 1" (2.95m x 2.16m)

Lounge/Dining Room 14' 10" x 13' 11" (4.52m x 4.24m)
maximum measurements

Bedroom One 12' 9" x 10' 7" (3.89m x 3.23m)
maximum measurements

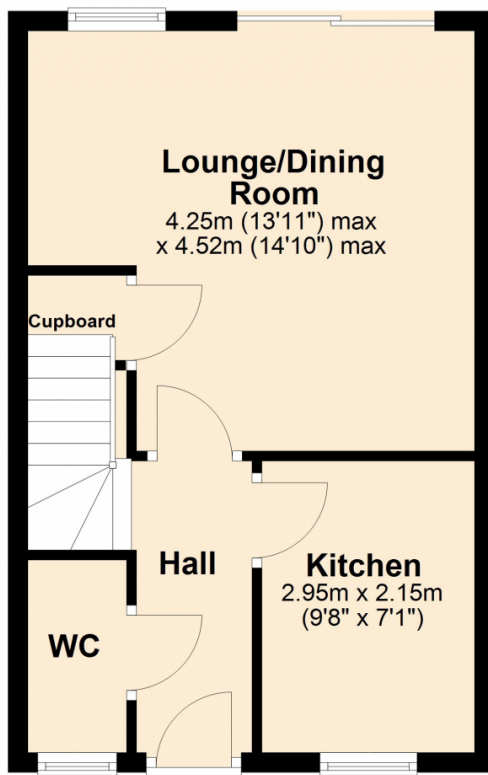
Bedroom Two 11' 0" x 8' 4" (3.35m x 2.54m)

Bedroom Three 7' 10" x 6' 2" (2.39m x 1.88m)

Bathroom 6' 2" x 6' 1" (1.88m x 1.85m)

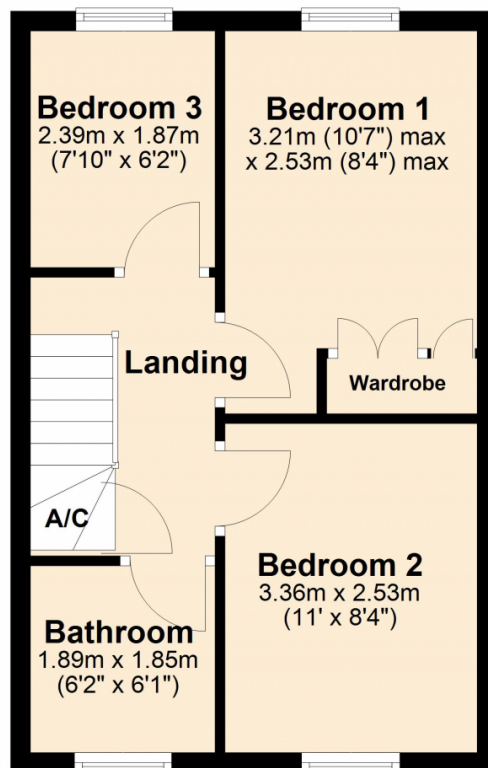
Ground Floor

Approx. 33.0 sq. metres (355.7 sq. feet)



First Floor

Approx. 33.0 sq. metres (355.7 sq. feet)



Total area: approx. 66.1 sq. metres (711.3 sq. feet)

