



Living
made
better

Defoe House
London City Island, E14 0TX



Offers In Excess Of £585,000

Defoe House, London City Island, E14 0TX

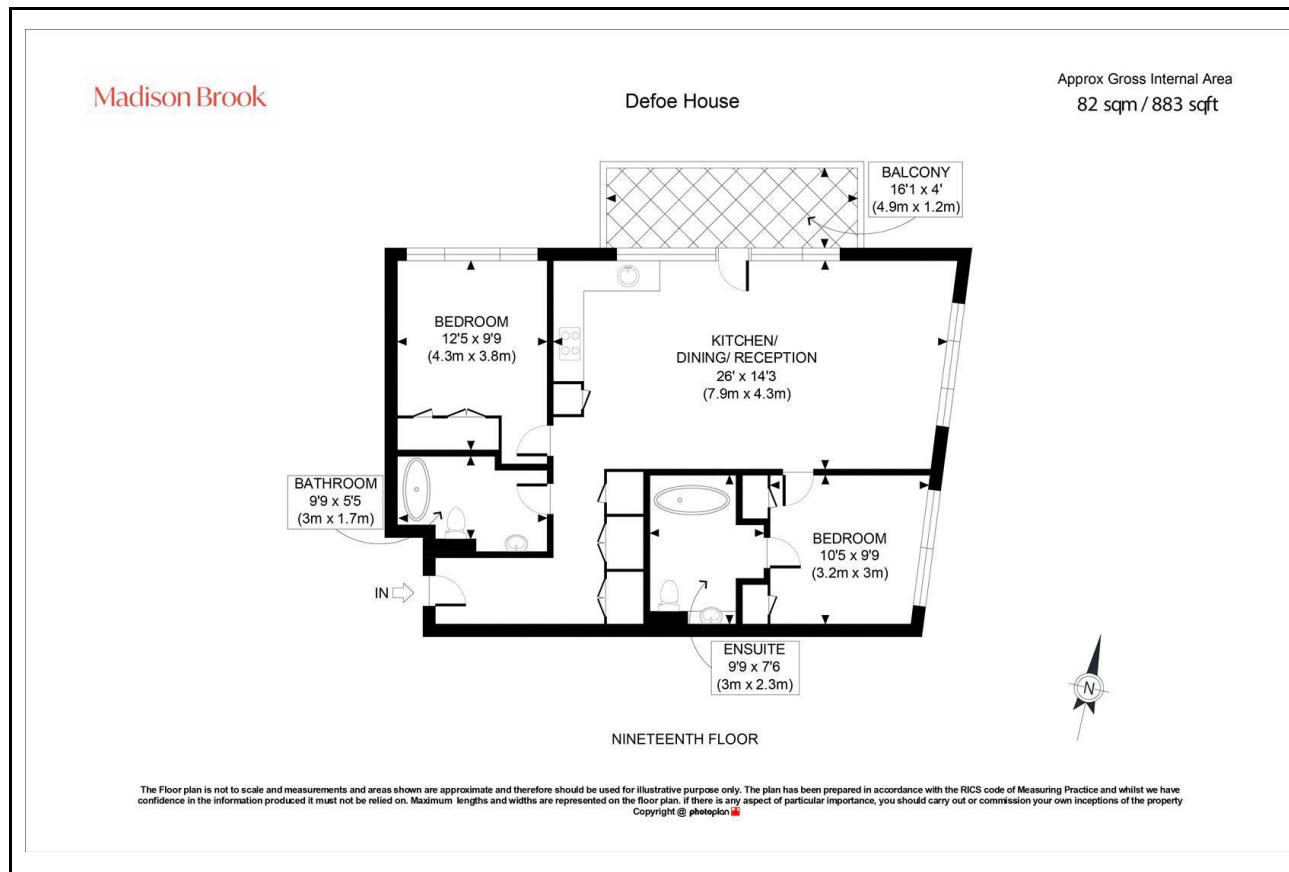
Madison Brook

Property Summary

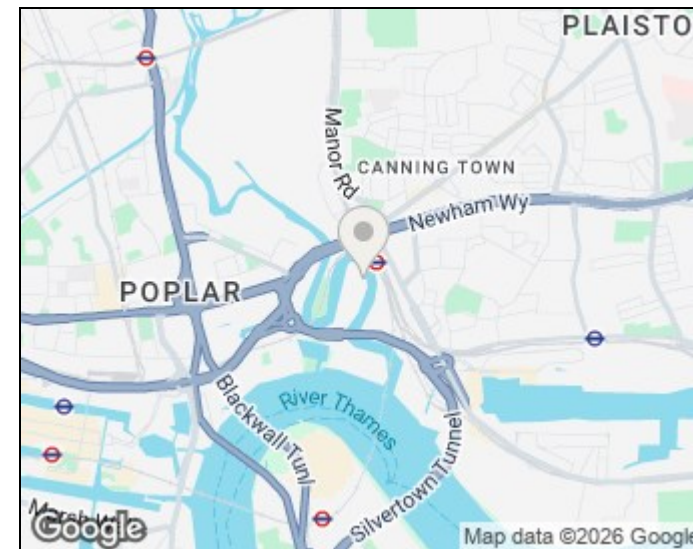
Positioned on the 19th floor of Defoe House in the award-winning London City Island, this stunning 884 sqft two-bedroom apartment boasts sweeping views over the City and River Lea. The bright open-plan living space includes a stylish kitchen with integrated appliances and a private balcony. The principal bedroom features built-in wardrobes and an en-suite, while a second bedroom is served by a modern family bathroom.

Residents enjoy access to the exclusive City Island Arts Club offering concierge, gym, spa, pool, cinema and more. Moments from Canning Town and East India stations for easy access across London.

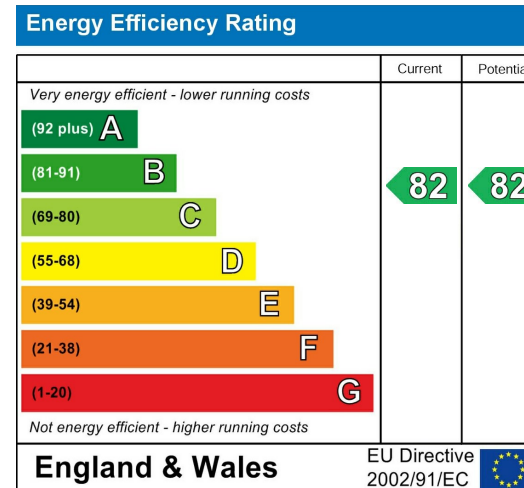
Floorplan



Area Map



Energy Efficiency Graph



These particulars, whilst believed to be accurate are set out as a general outline only for guidance and do not constitute any part of an offer or contract. Intending purchasers should not rely on them as statements of representation of fact, but must satisfy themselves by inspection or otherwise as to their accuracy. No person in this firm's employment has the authority to make or give any representation or warranty in respect of the property.

Unit B 20 Western Gateway, Royal Victoria
Dock, London, E16 1BS
Tel: 020 3946 6000 Email:
docklands@madisonbrook.com
<https://madisonbrook.com/>