



Waterside Close, Barking

£1,250 pcm Leasehold

1st Floor • Lounge/Diner • Separate Kitchen • Double Glazing & Electric Heating • Easy Access to Barking Station & Town Centre • Residents Parking • Available From Early May



Stoneshaw

Spacious one bed first floor flat with lounge/diner, separate kitchen, double glazing, residents parking. Close to Barking Station and town centre. Available early May.

Council Tax band: C

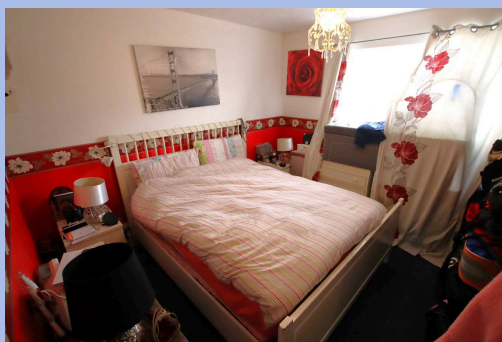
Tenure: Leasehold

EPC Energy Efficiency Rating: C

EPC Environmental Impact Rating: D



- › 1st Floor
- › Lounge/Diner
- › Separate Kitchen
- › Double Glazing & Electric Heating
- › Easy Access to Barking Station & Town Centre
- › Residents Parking
- › Available From Early May



You can include any text here. The text can be modified upon generating your brochure.