

# Parkheath

*Sold on Service*

**Greencroft Gardens NW6**

**£2,400 PCM (£554 per week) - Camden Band D**



Well-presented two double bedroom apartment  
South Hampstead Conservation Area  
Modern fitted kitchen  
Wood flooring and skylights  
Approx a 6-minute walk to Finchley Road  
Underground

Top floor of double-fronted period conversion  
Reception with exposed brick feature wall  
Contemporary shower room  
Double glazing throughout  
EPC: Rating D, Council Tax: Camden, band D

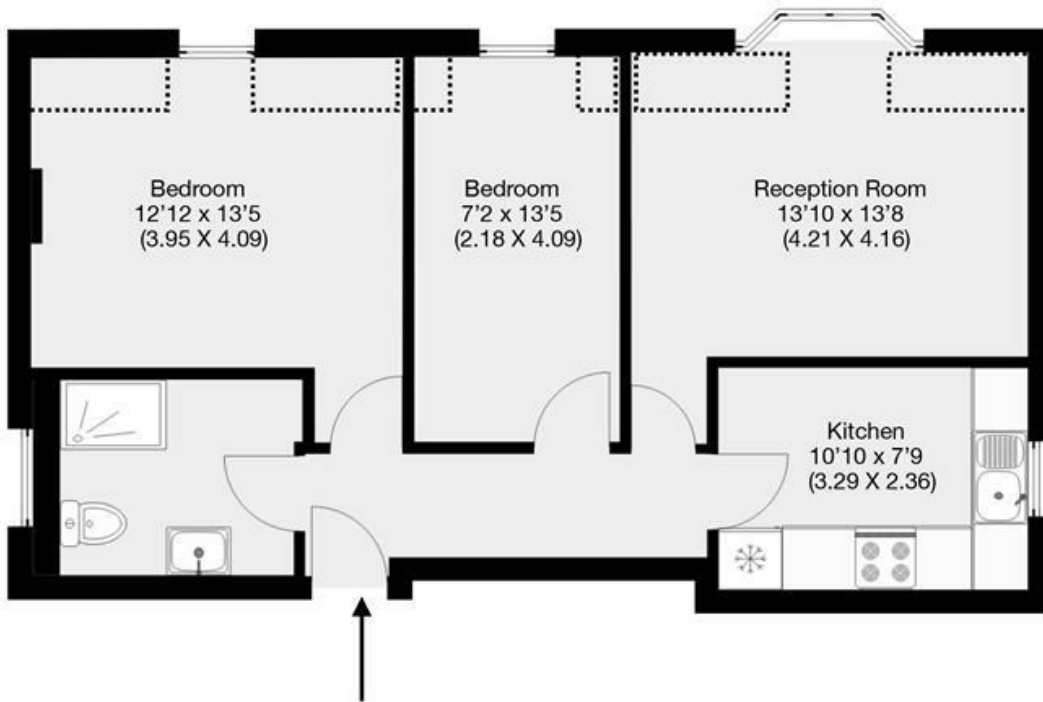
West Hampstead Office 020 7794 7111



Greencroft Gardens, London, NW6

Approximate Gross Internal Area Without Restricted Area 56 sqm / 603

Approximate Gross Internal Area With Restricted Area 58.3 sqm / 628 sqft



Third Floor

THIS FLOOR PLAN IS PRODUCED FOR PARKHEATH SUBMITTED BY ARCHIMEDIA web: [www.archi-media.co.uk](http://www.archi-media.co.uk)

Whilst every attempt has been made to ensure the accuracy of the floor plan contained here, measurements of doors, windows and rooms are approximate and no responsibility is taken for any error, omission or misstatement. These plans are for representation purposes only and should be used as such by any prospective buyer or lease. Specifically no guarantee is given on the gross internal floor area of the property if quoted on this plan and any figures given is initial guidance only and should be treated as such.

The particulars do not constitute part of an offer or contract. The particulars, including text, photographs and plans, are for the guidance only of prospective purchasers/tenants and must not be relied upon as statements of fact. The descriptions provided therein represent the opinion of the author and whilst given in good faith should not be construed as statements of fact. Nothing in these particulars shall be deemed a statement that the property is in good condition or otherwise or that any services or facilities are in good working order. All measurements are approximate