

**Shaw
& Co**
ESTATE
AGENTS

£585,000

Old Cote Drive

Hounslow, TW5 0RW

PROPERTY SUMMARY

A generously proportioned three bedroom semi detached family home situated in Old Cote Drive in Heston. The property features a spacious bay fronted reception room, separate dining room, fitted kitchen, large conservatory and also a ground floor WC.

Upstairs are three well proportioned bedrooms and a family bathroom. Externally the home benefits from a generous rear garden with a detached annex, ideal for a home office or guest accommodation, together with off street parking to the front.

Old Cote Drive is situated in a quiet cul-de-sac street in Heston. Conveniently located near reputable schools, excellent transport links and local amenities, making this property an excellent choice for families & commuters alike.

Viewing Not To Be Missed.

3



2

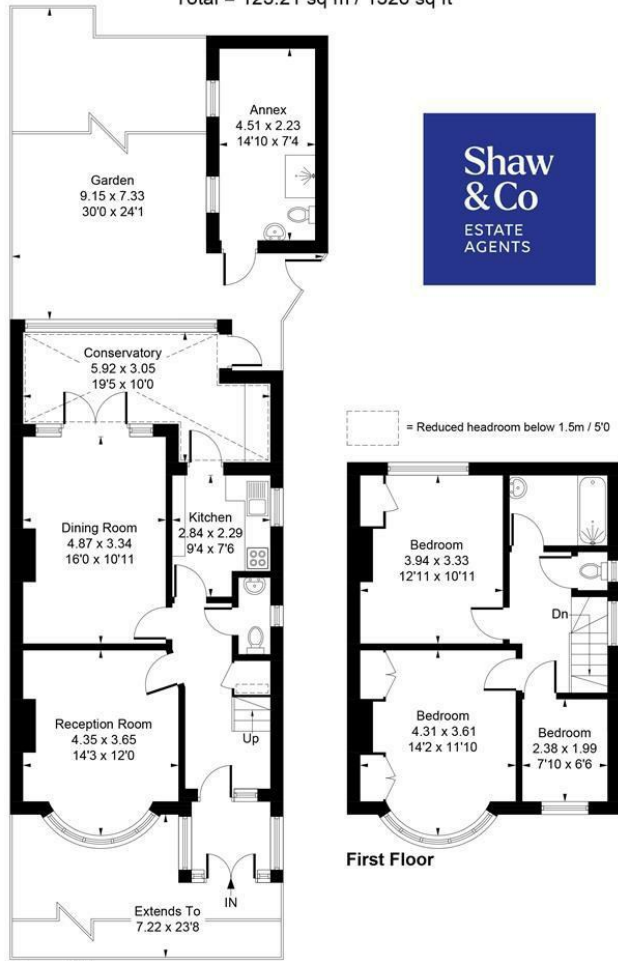


2





Approximate Gross Internal Area = 112.92 sq m / 1215 sq ft
 Annex = 10.29 sq m / 111 sq ft
 Total = 123.21 sq m / 1326 sq ft



Ground Floor

First Floor

Whilst every attempt has been made to ensure the accuracy of the floor plan contained here, measurements of doors, windows, rooms and any other items are approximate and no responsibility is taken for any error, omission, or mis-statement. This plan is for illustrative purposes only and should be used as such by any prospective purchaser.
 © Vizion Property Marketing Produced for Shaw & Co.

LOCAL AUTHORITY

Hounslow

TENURE

Freehold

COUNCIL TAX BAND

E

VIEWINGS

By prior appointment only

Energy Efficiency Rating		Current	Potential
Very energy efficient - lower running costs			
(92 plus) A			
(81-91) B			
(69-80) C			
(55-68) D			
(39-54) E			
(21-38) F			
(1-20) G			
Not energy efficient - higher running costs			
England & Wales		EU Directive 2002/91/EC	



Agents Note: Whilst every care has been taken to prepare these particulars, they are for guidance purposes only. All measurements are approximate and are for general guidance purposes only and whilst every care has been taken to ensure their accuracy, they should not be relied upon and potential buyers/tenants are advised to recheck the measurements

Shaw & Co
 ESTATE AGENTS

OFFICE ADDRESS
 10 Central Parade
 New Heston Road
 Heston
 Middlesex
 TW5 0LJ

OFFICE DETAILS
 0208 570 7258
 heston@shawandcoestates.com