



Wordsworth Road, TW12

£685,000

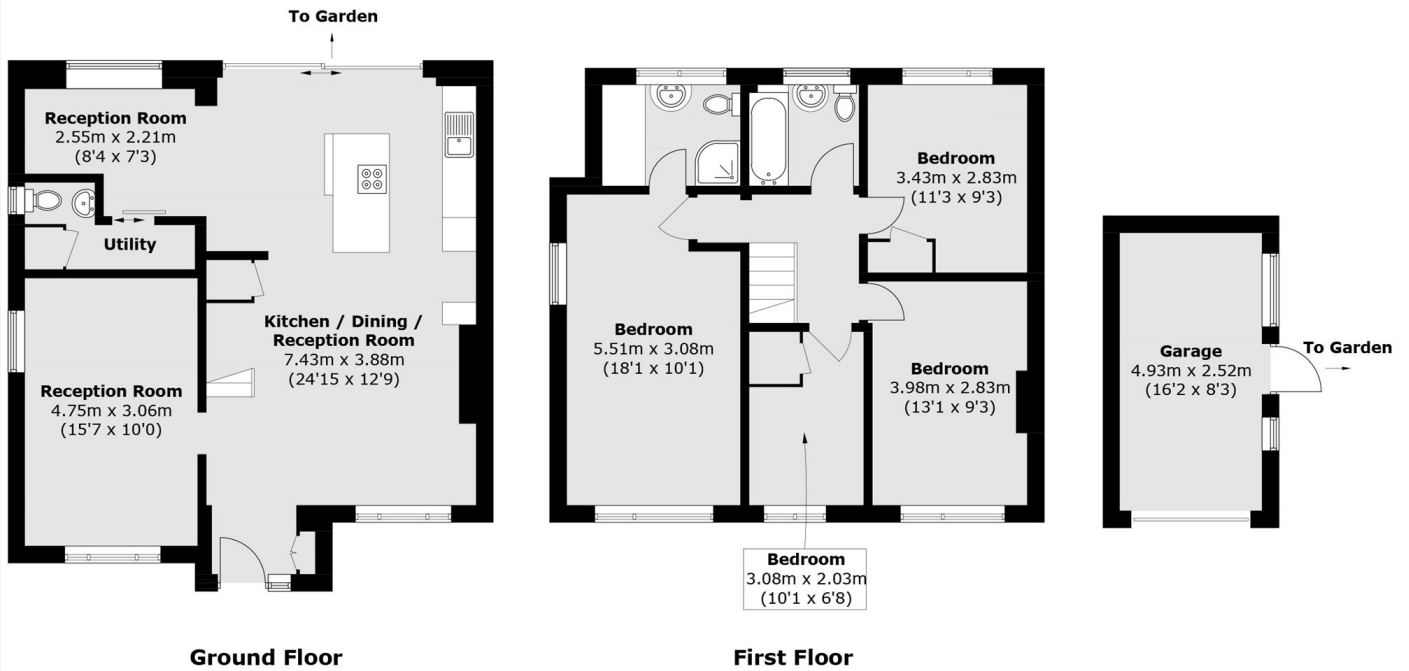
A well presented four bedroom house with a spacious open-plan kitchen/dining area opening onto the garden. With plenty of lateral living space, a garage and parking, this makes a great family home.

Wordsworth Road is located within the popular 'Poets' development in Hampton, a choice of state and private schools are all within walking distance. Bus routes, local parks, Hampton High Street, Bushy Park are all nearby.

Features

- Four Bedrooms
- Semi Detached
- Garage & Parking
- Private Garden
- Lateral Living Space
- No Onward Chain

Wordsworth Road, Hampton, TW12



Total area (approx.): 124.7 sq. m (1,342.2 sq. ft)
Garage: 12.5 sq. m (134.5 sq. ft)