



Mountcombe Close, KT6

£425,000

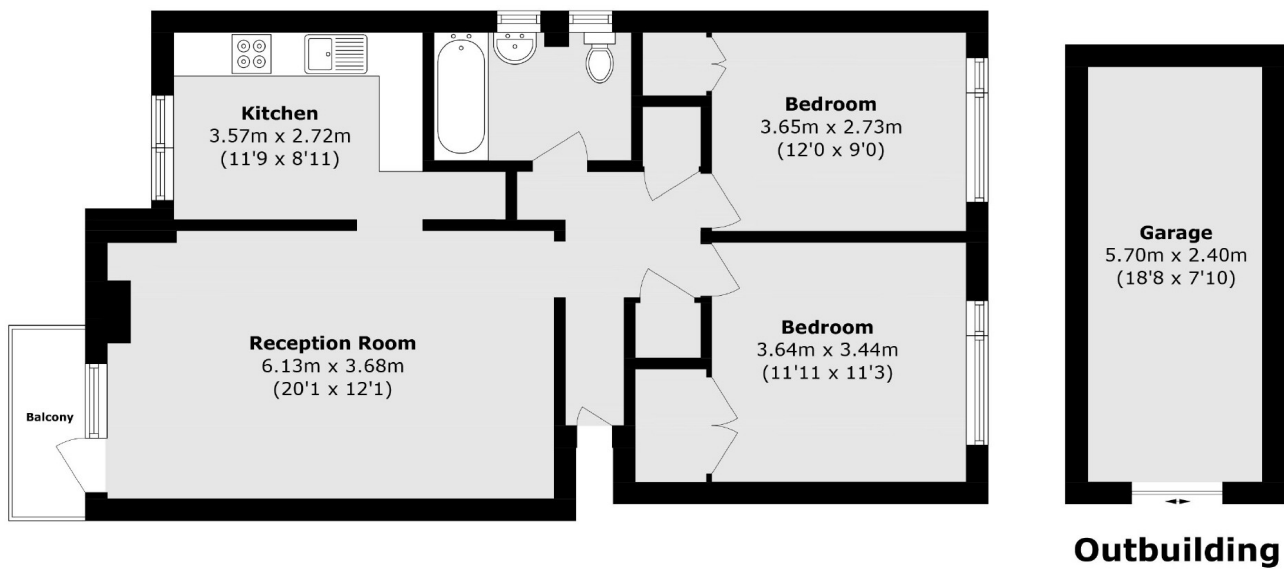
A large bright spacious two bedroom top floor apartment offered with a share of freehold situated in a peaceful cul-de-sac in central Surbiton. The property features a welcoming entrance hall, a large reception & dining room that opens onto a private balcony, two generously sized double bedrooms, a separate kitchen and good sized bathroom. The property further benefits from a garage, communal gardens and plenty of storage through out.

Mountcombe Close is a cosy cul-de-sac conveniently located just half a mile from Surbiton High Street with its shops, bars, restaurants and mainline train station with fast trains into Waterloo.

Features

- Top Floor
- Two Double Bedrooms
- Private Balcony
- Garage
- Share Of Freehold
- Peaceful Cul-De-Sac

Mountcombe Close, Surbiton, KT6



Total area (approx.): 70.7 sq. m (761.0 sq. ft)
Balcony area (approx.): 2.8 sq. m (30.1 sq. ft)
Garage area (approx.): 13.6 sq. m (146.3 sq. ft)