

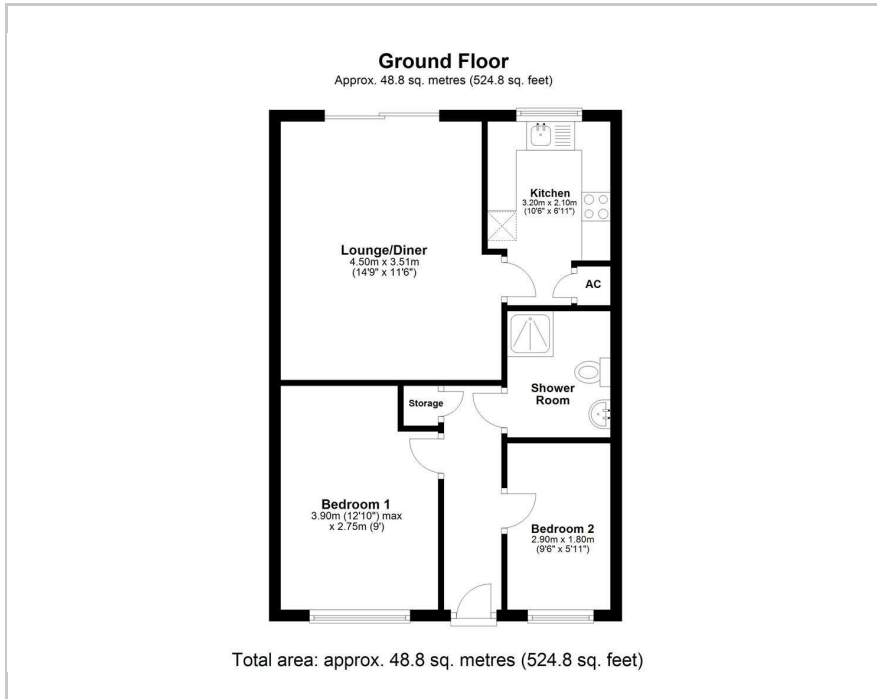
# William.



11 Delisle Court, Loughborough, LE11 4PP  
Guide price £130,000

2 1 1 C

## Floor Plan



## Area Map



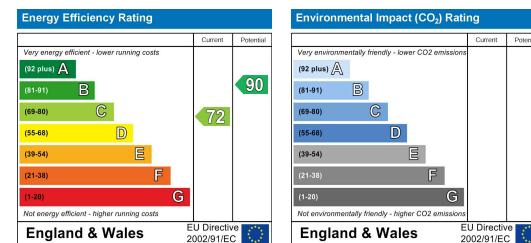
## Key Features:

- **\*\* OVER 55'S Independent Retirement Living \*\***
- **NO UPWARD SALES CHAIN**
- **Two Bedrooms**
- **Prime Position Within The Development**
- **Spacious Living Room with Direct Garden Access**
- **Modernised Kitchen & Shower Room**
- **Well Presented Throughout**
- **Private Patio Area & Beautiful Communal Gardens to Front & Rear**
- **Residents Parking Available**
- **Within Easy Reach of Loughborough Town Centre**

## Viewing:

Please contact our Team on 01509 426 106 if you wish to arrange a viewing appointment for this property or require further information.

## Energy Efficiency Graph



These particulars, whilst believed to be accurate are set out as a general outline only for guidance and do not constitute any part of an offer or contract. Intending purchasers should not rely on them as statements of representation of fact, but must satisfy themselves by inspection or otherwise as to their accuracy. No person in this firm's employment has the authority to make or give any representation or warranty in respect of the property.