

Property ref: 74503

## Skylark House, Reading, RG2 0PA

£1,600 PCM

**HASLAM'S**  
Lettings



A stunning two bedroom, fourth floor apartment situated in the exclusive Kennet Island development, within walking distance of Green Park and with easy access to the M4. Reading Borough Council tax band C. Broadband/Mobile Info: Connections available. For an indication of specific speeds and supply of Broadband and Mobile, we advise applicants go to the Ofcom website Broadband and Mobile Coverage Checker.

**Available 06/07/2026**

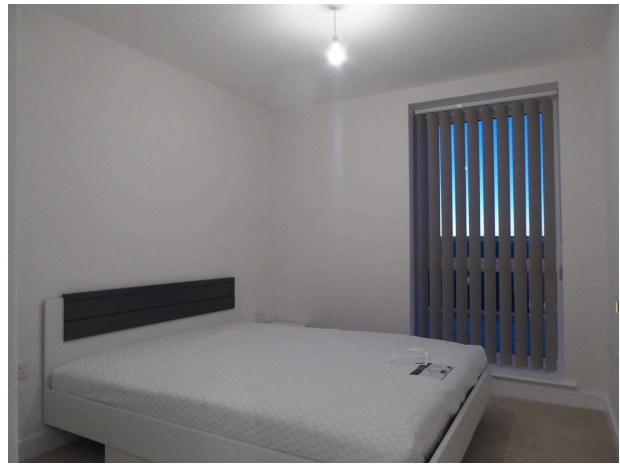
- Two double bedrooms; Master with en-suite
- Open plan living/kitchen area; Modern appliances
- Secure allocated underground parking
- Close links to A329 & M4; Walking distance to local amenities & bus routes
- Electric heating; EPC rating C
- Furnished; Managed by HASLAM'S

\*Fees For Assured Shorthold Tenancies: when you rent a property from us you will be required to pay a sum equivalent to one weeks' rent for a holding deposit. Upon successful application, this amount will be off set against your first months' rent. You will also be required to pay a security deposit equivalent to 5 weeks' rent which will be held and protected in line with Deposit legislation. For more information about our fees please visit: [www.haslams.net](http://www.haslams.net)  
Fees for all other tenancies (Non Housing Act Tenancies / Company Lets): when you rent a property from us we will charge you a one-off fee per property. This charge is the equivalent of 15 days of the monthly rental charge (+VAT) with a minimum fee of £450 (inc.VAT) up to a maximum of £650 (inc.VAT). Other fees may apply depending on your circumstances.

**0118 960 1055**

**[lettings@haslams.net](mailto:lettings@haslams.net) [www.haslams.net](http://www.haslams.net)**

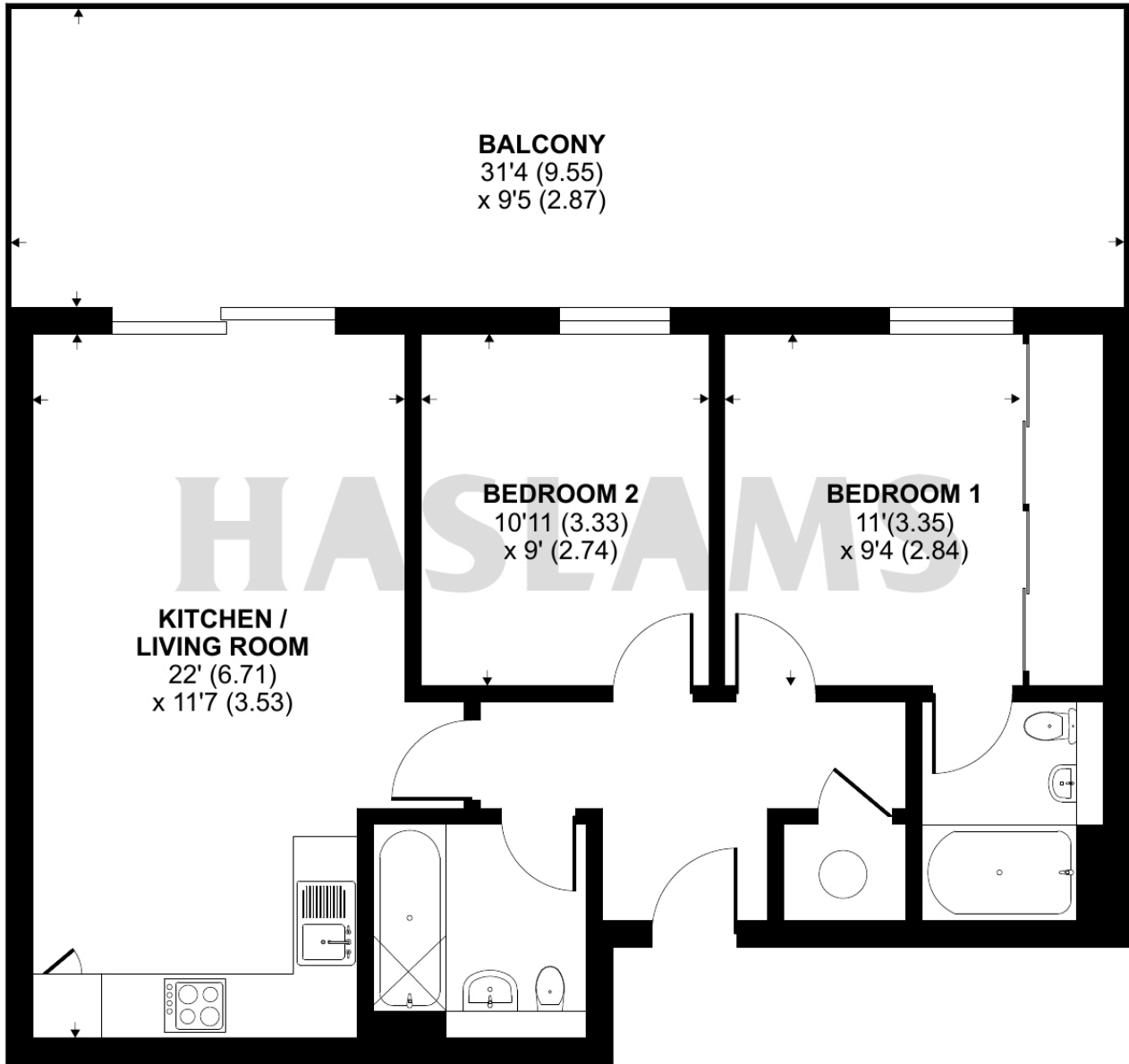
**Haslams Estate Agents Ltd, 159 Friar Street, Reading, Berkshire, RG1 1HE**



# Drake Way, Reading, RG2

Approximate Area = 681 sq ft / 63.2 sq m

For identification only - Not to scale



**FOURTH FLOOR**



Floor plan produced in accordance with RICS Property Measurement Standards incorporating International Property Measurement Standards (IPMS2 Residential). © n1cheom 2024. Produced for Haslam's. REF: 1129945