



Fishers Bank, Littleport CB6 1LN

welcome to

Fishers Bank, Littleport Ely

A detached house located within a popular residential area of Littleport offering spacious accommodation throughout including four double bedrooms, en-suite shower room and modern kitchen/dining area - Viewing highly recommended.

Entrance Hall

With radiator, stairs leading to first floor and doors to:

Cloakroom/W.C.

Fitted with a suite comprising vanity wash hand basin with mixer tap over and storage cupboard beneath, low level w.c, radiator, extractor.

Living Room

17' x 10' 4" (5.18m x 3.15m)

With radiator and double glazed window to front aspect.

Dining Area

8' 11" x 8' 1" (2.72m x 2.46m)

With radiator, double glazed window to front aspect. double doors opening to rear garden and open plan to:

Kitchen

10' x 8' 9" (3.05m x 2.67m)

With a fitted range of base units and drawers with work surfaces over to two sides, matching wall units, inset one and a half bowl sink and drainer unit with mixer tap over, built in under oven with hob and extractor over, integrated fridge/freezer, double glazed window to side aspect and archway to:

Utility Room

5' 10" x 5' 9" (1.78m x 1.75m)

With a matching range of units and work surface to one side, space for washing machine, radiator and door to rear.





First Floor Landing

With radiator, airing cupboard, double glazed window to rear aspect and doors to:

Bedroom One

17' max x 10' 4" (5.18m max x 3.15m)

With radiator, built in wardrobes, double glazed window to front aspect and door to:

En-Suite Shower Room

Fitted with a modern suite comprising double shower enclosure, low level w.c, vanity wash hand basin with mixer tap over and storage cupboard beneath, towel ladder radiator, spot lighting, extractor and double glazed window to rear.

Bedroom Two

10' 7" x 9' 10" (3.23m x 3.00m)

With radiator, large storage cupboard and double glazed window to front aspect.

Bathroom

Fitted with a modern suite comprising panel enclosed bath with mixer tap, shower attachment over and glass shower screen, vanity wash hand basin and W.C unit with storage, towel ladder radiator, spot lighting, extractor and double glazed window to rear.

Second Floor Landing

With sky light and doors to:

Bedroom Three

13' 2" inc window recess x 10' 6" (4.01m inc window recess x 3.20m)

With radiator, restricted head height and double glazed window to front aspect.

Bedroom Four

13' 2" inc window recess x 10' (4.01m inc window recess x 3.05m)

With radiator, restricted head height and double glazed window to front aspect.

Outside

To the front of the property is a shallow graveled garden with a pathway leading to the front door. The driveway is located to the rear of the property and provides off road parking for two cars. The rear garden is located to the side of the property and is presented for ease of maintenance being laid to patio, decking and graveled areas.

Bar/Garden Room

18' 5" x 7' 9" (5.61m x 2.36m)

Formally the garage and now a bar/garden room being fully insulated, electric panel heater, power and light, bar area and loft access.



view this property online williamhbrown.co.uk/Property/MDH108699



welcome to

Fishers Bank, Littleport

- Detached Family Home
- Popular Residential Area
- Four Double Bedrooms
- En-suite to Bedroom One
- Bar/Garden Room

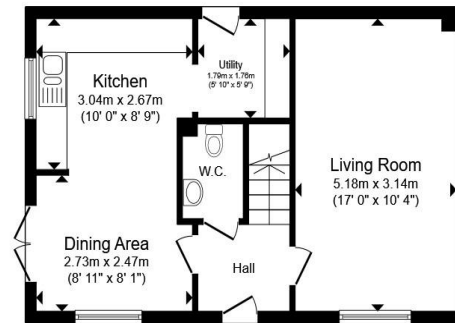
Tenure: Freehold

EPC Rating: E

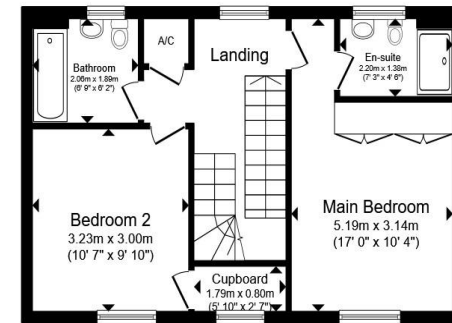
Council Tax Band: D

guide price

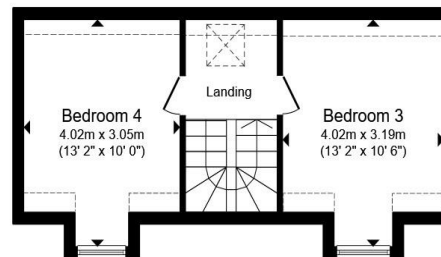
£350,000



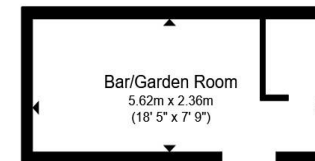
Ground Floor



First Floor



Second Floor



Outbuilding

Total floor area 127.1 m² (1,368 sq.ft.) approx

This floor plan is for illustrative purposes only. It is not drawn to scale. Any measurements, floor areas (including any total floor area), openings and orientation are approximate. No details are guaranteed, they cannot be relied upon for any purpose and they do not form part of any agreement. No liability is taken for any error, omission or misstatement. A party must rely upon its own inspection(s). Powered by www.propertybox.io



view this property online williamhbrown.co.uk/Property/MDH108699



Property Ref:
MDH108699 - 0002

1. MONEY LAUNDERING REGULATIONS Intending purchasers will be asked to produce identification documentation at a later stage and we would ask for your co-operation in order that there is no delay in agreeing the sale. 2. These particulars do not constitute part or all of an offer or contract. 3. The measurements indicated are supplied for guidance only and as such must be considered incorrect. Potential buyers are advised to recheck measurements before committing to any expense. 4. We have not tested any apparatus, equipment, fixtures or services and it is in the buyers interest to check the working condition of any appliances. 5. Where an EPC, or a Home Report (Scotland only) is held for this property, it is available for inspection at the branch by appointment. If you require a printed version of a Home Report, you will need to pay a reasonable production charge reflecting printing and other costs. 6. We are not able to offer an opinion either written or verbal on the content of these reports and this must be obtained from your legal representative. 7. Whilst we take care in preparing these reports, a buyer should ensure that his/her legal representative confirms as soon as possible all matters relating to title including the extent and boundaries of the property and other important matters before exchange of contracts.

William H Brown is a trading name of Sequence (UK) Limited which is registered in England and Wales under company number 4268443, Registered Office is Cumbria House, 16-20 Hockliffe Street, Leighton Buzzard, Bedfordshire, LU7 1GN. VAT Registration Number is 500 2481 05.

 william h brown



01638 713274



Mildenhall@williamhbrown.co.uk



17 High Street, Mildenhall, BURY ST.
EDMUNDS, Suffolk, IP28 7EQ



williamhbrown.co.uk