



Connells

Gibbs Couch  
Watford



## Property Description

Situated on the popular and conveniently located Gibbs Couch, this well presented three-bedroom terraced home offers generous accommodation in the heart of Carpenders Park. The property has been well maintained throughout, providing bright and airy rooms that suit a range of buyers.

Inside, the home features a spacious living room and a large fitted kitchen with ample room for dining, creating an ideal space for both everyday living and entertaining. Upstairs, three well proportioned bedrooms offer excellent flexibility for family living, all served by a modern family bathroom.

Externally, the property enjoys a private rear garden-perfect for outdoor dining, relaxing, or entertainment, along with a garage located in a nearby block.

Gibbs Couch is ideally positioned within Carpenders Park, a highly regarded area known for its community feel, green spaces, and superb accessibility. The property is walking distance to Carpenders Park Station, offering links into London via the Overground network, making it an excellent choice for commuters. Local amenities are close at hand, including shops, cafés, and supermarkets, while nearby schools and recreational facilities make the area particularly attractive. Major road connections such as the M1 and M25 are also easily accessible, with convenient travel in all directions.

For further information or to book a viewing please contact Connells today.

## Entrance Hall

Door to side. Storage cupboard.

## Living Room

Window to front. Radiator. TV point.

## Kitchen

Door to garden. Window to rear. Radiator. Sink/bowl. Washing machine, dishwasher, fridge/freezer, electric oven and hob. Quartz worktop. Wall and base units. Combi boiler.

## Landing

Two storage cupboards. Loft access.

## Bedroom One

Window to front. Radiator. Built in wardrobe.

## Bedroom Two

Window to rear. Radiator. Built in wardrobe.

## Bedroom Three

Window to front. Radiator. Built in wardrobe.

## Bathroom

Window to rear. Tiled walls. Vanity. Heater. Walk in shower.

Separate WC, with tiled walls and window to rear.

## Outside

## Rear Garden

Patio and laid to lawn.

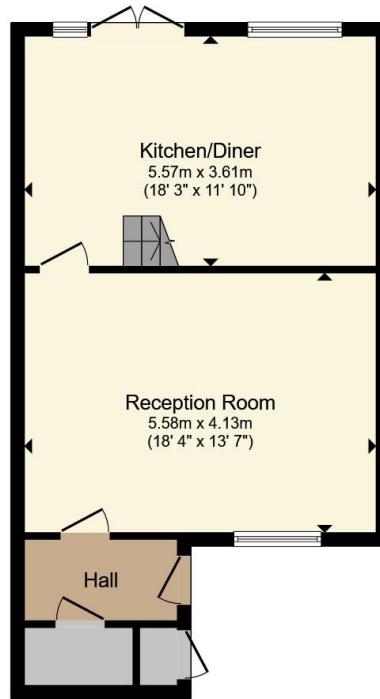
## Garage

In block.

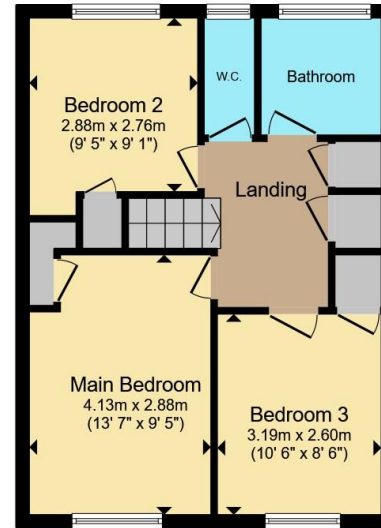








**Ground Floor**



**First Floor**

Total floor area 94.0 m<sup>2</sup> (1,011 sq.ft.) approx

This floor plan is for illustrative purposes only. It is not drawn to scale. Any measurements, floor areas (including any total floor area), openings and orientation are approximate. No details are guaranteed, they cannot be relied upon for any purpose and they do not form part of any agreement. No liability is taken for any error, omission or misstatement. A party must rely upon its own inspection(s). Powered by [www.propertybox.io](http://www.propertybox.io)

**Connells**

To view this property please contact Connells on

**T 020 8950 4404**  
**E [bushey@connells.co.uk](mailto:bushey@connells.co.uk)**

86 High Street  
BUSHEY WD23 3HD

EPC Rating: D Council Tax  
Band: D

Tenure: Freehold

**view this property online [connells.co.uk/Property/BUS307403](http://connells.co.uk/Property/BUS307403)**



1. MONEY LAUNDERING REGULATIONS Intending purchasers will be asked to produce identification documentation at a later stage and we would ask for your co-operation in order that there will be no delay in agreeing the sale. 2. These particulars do not constitute part or all of an offer or contract. 3. The measurements indicated are supplied for guidance only and as such must be considered incorrect. Potential buyers are advised to recheck measurements before committing to any expense. 4. We have not tested any apparatus, equipment, fixtures, fittings or services and it is in the buyers interest to check the working condition of any appliances.

Connells Residential is registered in England and Wales under company number 1489613, Registered Office is Cumbria House, 16-20 Hockliffe Street, Leighton Buzzard, Bedfordshire, LU7 1GN. VAT Registration Number is 500 2481 05.

**See all our properties at [www.connells.co.uk](http://www.connells.co.uk) | [www.rightmove.co.uk](http://www.rightmove.co.uk) | [www.zoopla.co.uk](http://www.zoopla.co.uk)**

Property Ref: BUS307403 - 0004